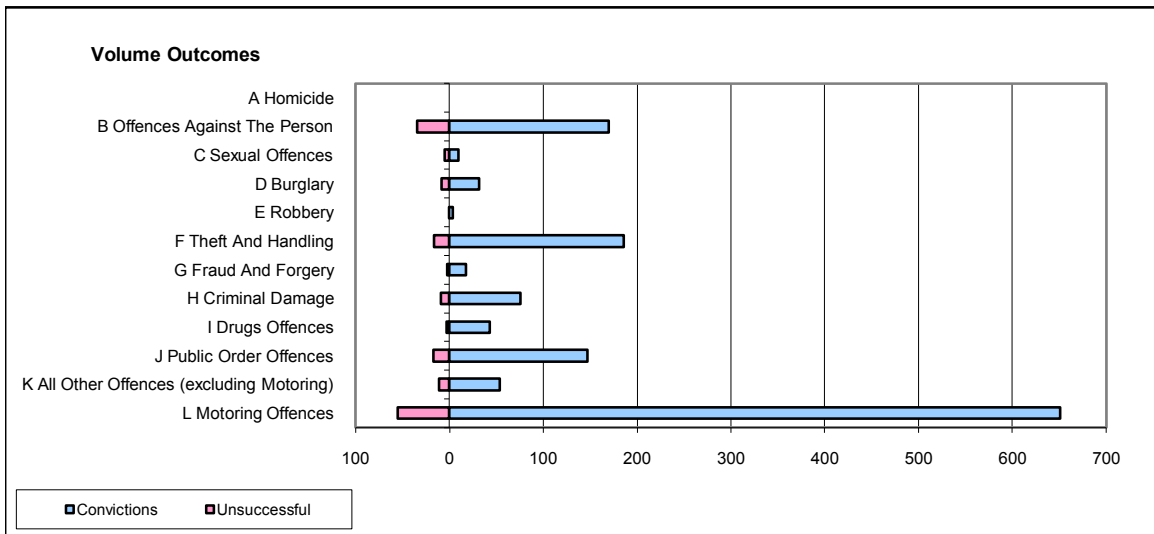
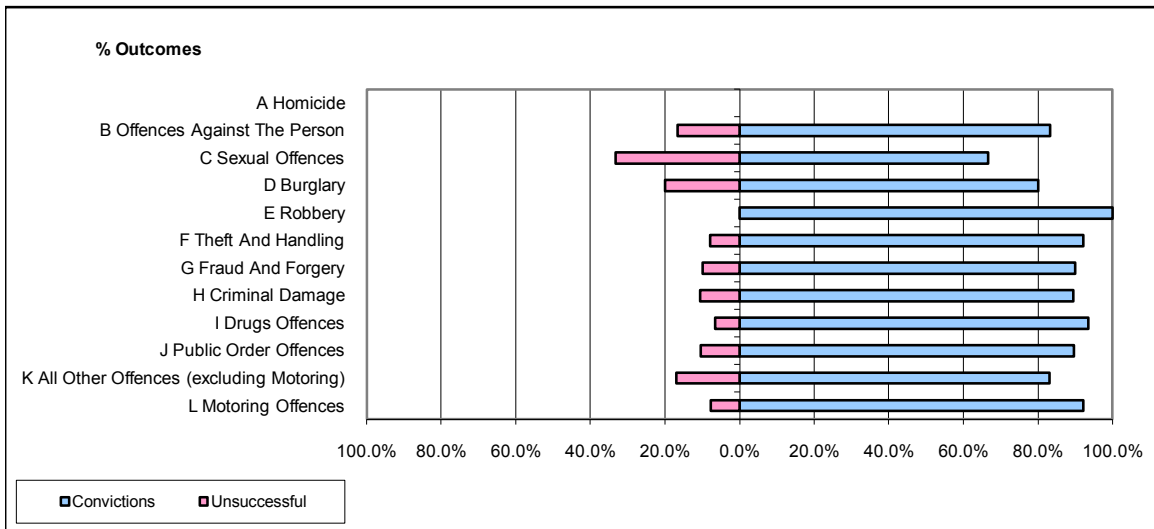


CPS OUTCOMES BY PRINCIPAL OFFENCE CATEGORY

August 2008

P04-Cheshire



	Convictions		Unsuccessful	
	Number of Defendants	%	Number of Defendants	%
A Homicide	0	0	0	0
B Offences Against The Person	170	83.3%	34	16.7%
C Sexual Offences	10	66.7%	5	33.3%
D Burglary	32	80.0%	8	20.0%
E Robbery	4	100.0%	0	0.0%
F Theft And Handling	186	92.1%	16	7.9%
G Fraud And Forgery	18	90.0%	2	10.0%
H Criminal Damage	76	89.4%	9	10.6%
I Drugs Offences	43	93.5%	3	6.5%
J Public Order Offences	147	89.6%	17	10.4%
K All Other Offences (excluding Motoring)	54	83.1%	11	16.9%
L Motoring Offences	651	92.2%	55	7.8%
Admin Finalisations	0	0.0%	8	100.0%
TOTAL	1,391	89.2%	168	10.8%