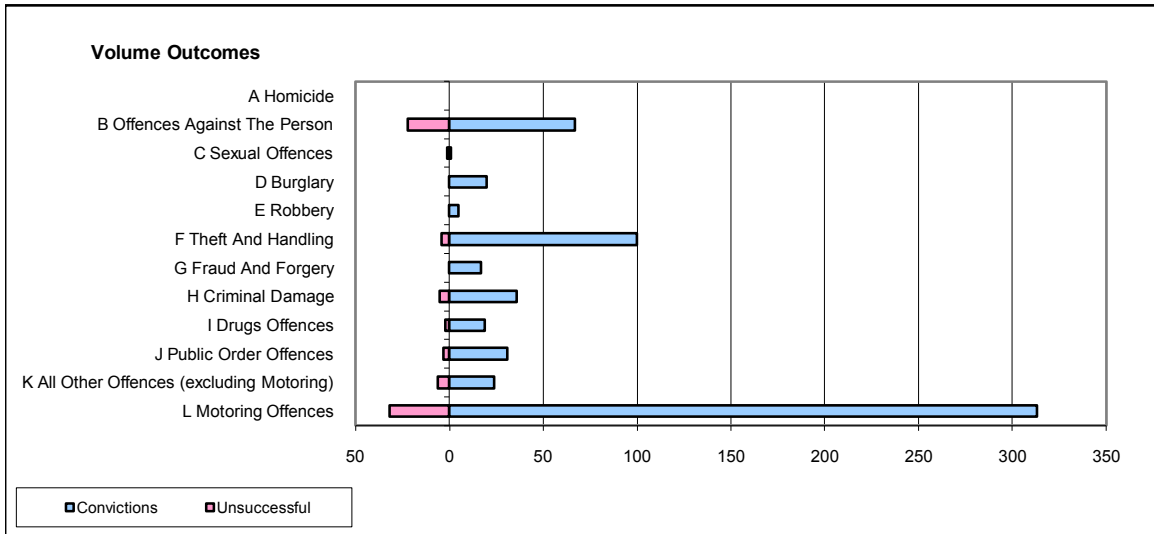
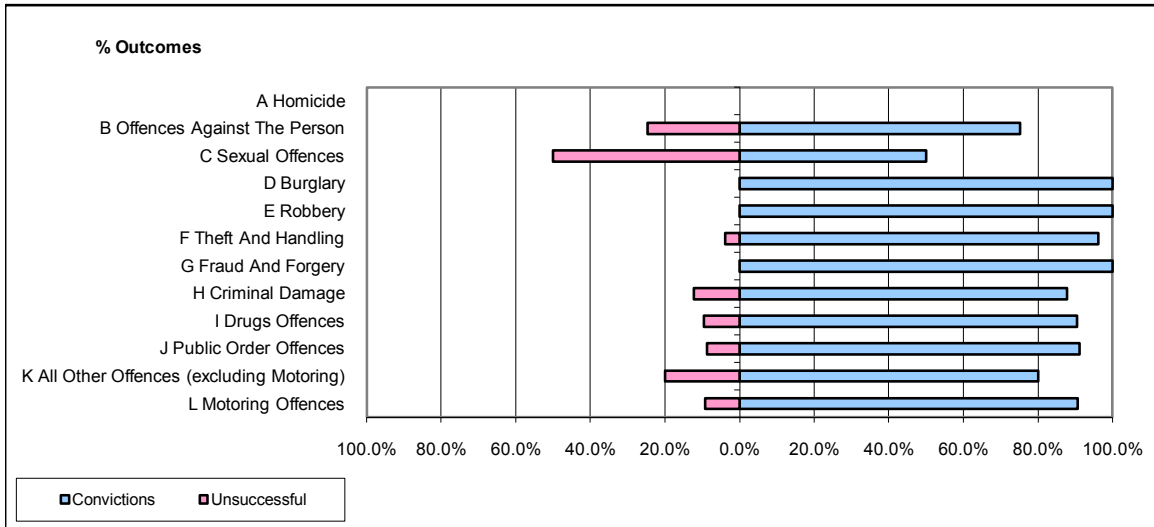


CPS OUTCOMES BY PRINCIPAL OFFENCE CATEGORY

August 2008

P02-Bedfordshire



	Convictions		Unsuccessful	
	Number of Defendants	%	Number of Defendants	%
A Homicide	0	0	0	0
B Offences Against The Person	67	75.3%	22	24.7%
C Sexual Offences	1	50.0%	1	50.0%
D Burglary	20	100.0%	0	0.0%
E Robbery	5	100.0%	0	0.0%
F Theft And Handling	100	96.2%	4	3.8%
G Fraud And Forgery	17	100.0%	0	0.0%
H Criminal Damage	36	87.8%	5	12.2%
I Drugs Offences	19	90.5%	2	9.5%
J Public Order Offences	31	91.2%	3	8.8%
K All Other Offences (excluding Motoring)	24	80.0%	6	20.0%
L Motoring Offences	313	90.7%	32	9.3%
Admin Finalisations	0	0.0%	10	100.0%
TOTAL	633	88.2%	85	11.8%