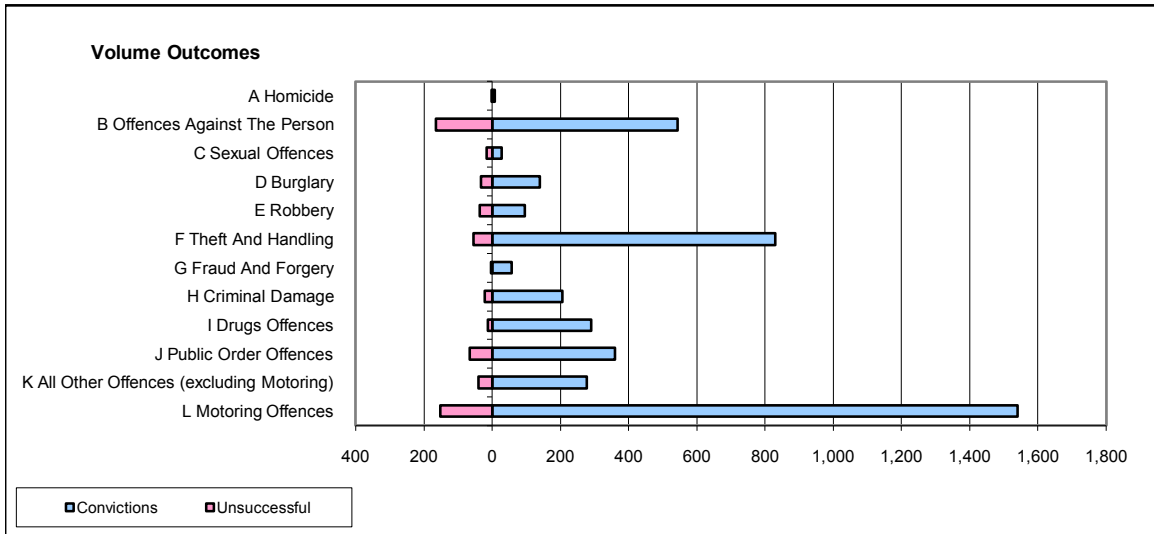
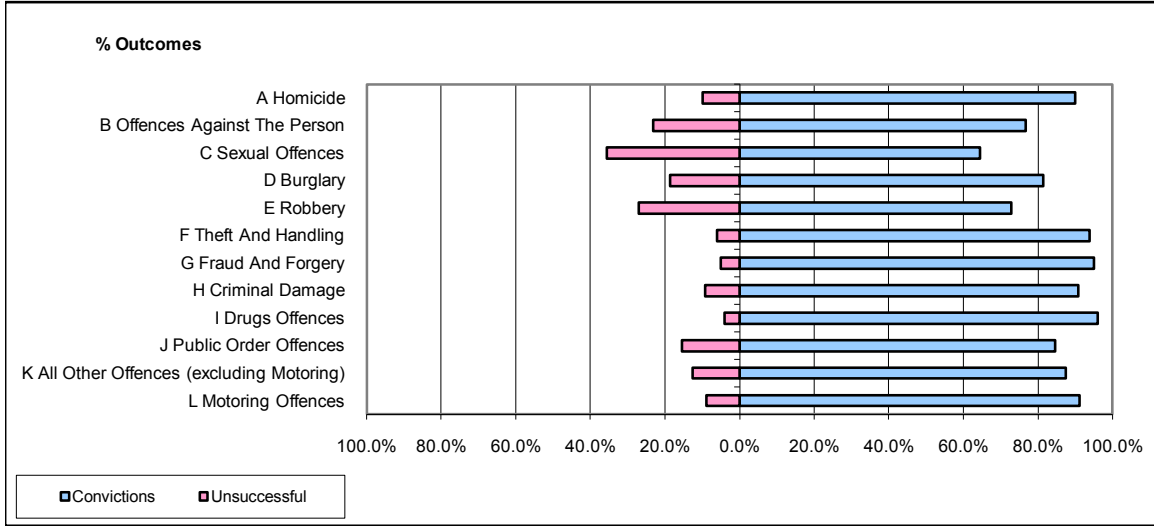


**CPS OUTCOMES BY PRINCIPAL OFFENCE CATEGORY**

July 2008

**P41-WestMidlands**



	Convictions		Unsuccessful	
	Number of Defendants	%	Number of Defendants	%
<b>A Homicide</b>	9	90.0%	1	10.0%
<b>B Offences Against The Person</b>	544	76.7%	165	23.3%
<b>C Sexual Offences</b>	29	64.4%	16	35.6%
<b>D Burglary</b>	140	81.4%	32	18.6%
<b>E Robbery</b>	97	72.9%	36	27.1%
<b>F Theft And Handling</b>	831	93.9%	54	6.1%
<b>G Fraud And Forgery</b>	57	95.0%	3	5.0%
<b>H Criminal Damage</b>	207	90.8%	21	9.2%
<b>I Drugs Offences</b>	290	96.0%	12	4.0%
<b>J Public Order Offences</b>	361	84.5%	66	15.5%
<b>K All Other Offences (excluding Motoring)</b>	277	87.4%	40	12.6%
<b>L Motoring Offences</b>	1,540	91.1%	151	8.9%
<b>Admin Finalisations</b>	0	0.0%	47	100.0%
<b>TOTAL</b>	<b>4,382</b>	<b>87.2%</b>	<b>644</b>	<b>12.8%</b>