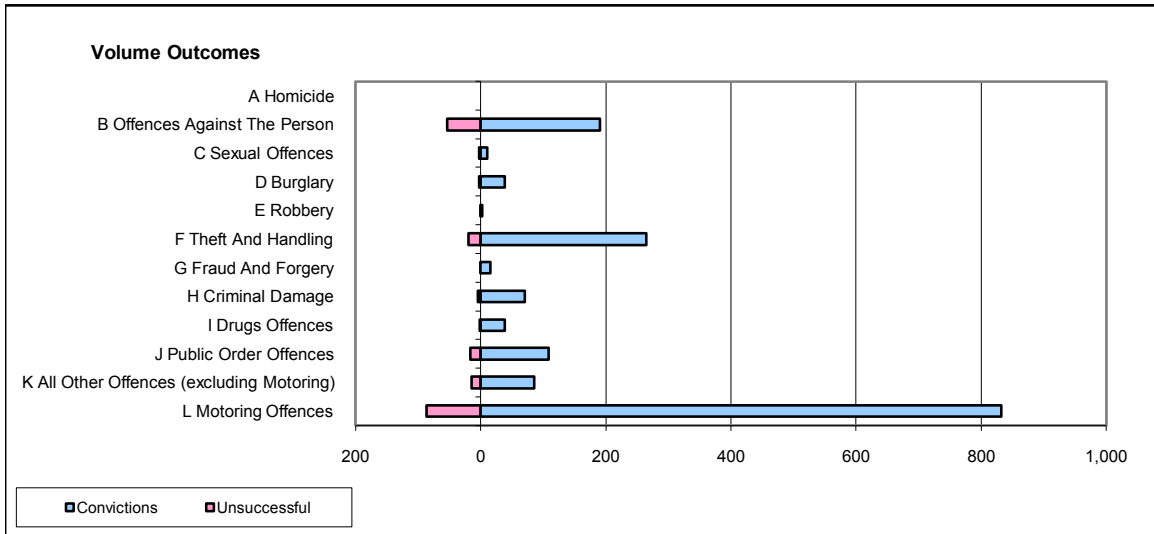
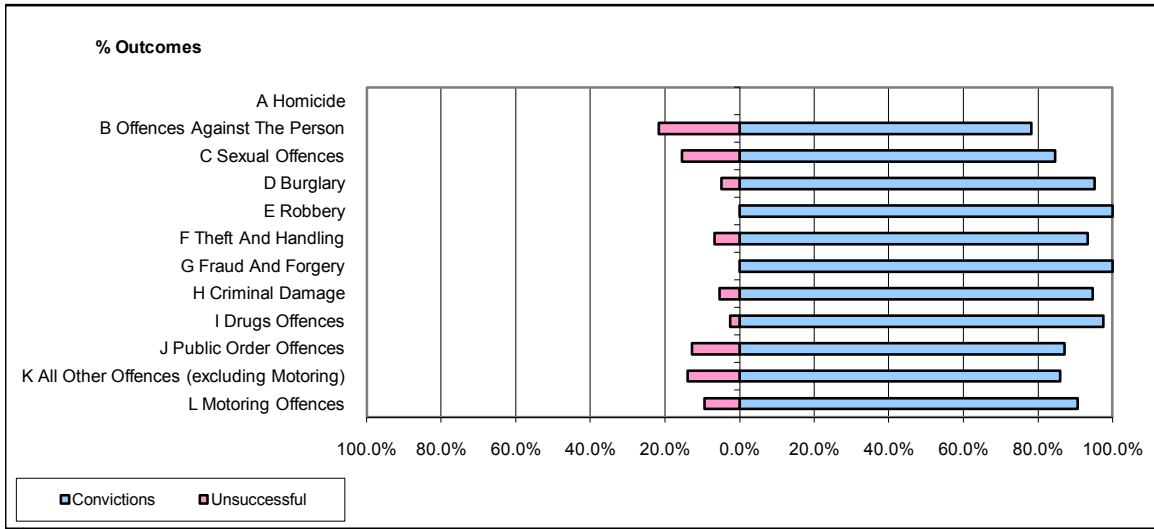


**CPS OUTCOMES BY PRINCIPAL OFFENCE CATEGORY**

**July 2008**

**P40-WestMercia**



	Convictions		Unsuccessful	
	Number of Defendants	%	Number of Defendants	%
<b>A Homicide</b>	0	0	0	0
<b>B Offences Against The Person</b>	191	78.3%	53	21.7%
<b>C Sexual Offences</b>	11	84.6%	2	15.4%
<b>D Burglary</b>	39	95.1%	2	4.9%
<b>E Robbery</b>	3	100.0%	0	0.0%
<b>F Theft And Handling</b>	265	93.3%	19	6.7%
<b>G Fraud And Forgery</b>	16	100.0%	0	0.0%
<b>H Criminal Damage</b>	71	94.7%	4	5.3%
<b>I Drugs Offences</b>	39	97.5%	1	2.5%
<b>J Public Order Offences</b>	109	87.2%	16	12.8%
<b>K All Other Offences (excluding Motoring)</b>	86	86.0%	14	14.0%
<b>L Motoring Offences</b>	832	90.6%	86	9.4%
<b>Admin Finalisations</b>	0	0.0%	18	100.0%
<b>TOTAL</b>	<b>1,662</b>	<b>88.5%</b>	<b>215</b>	<b>11.5%</b>