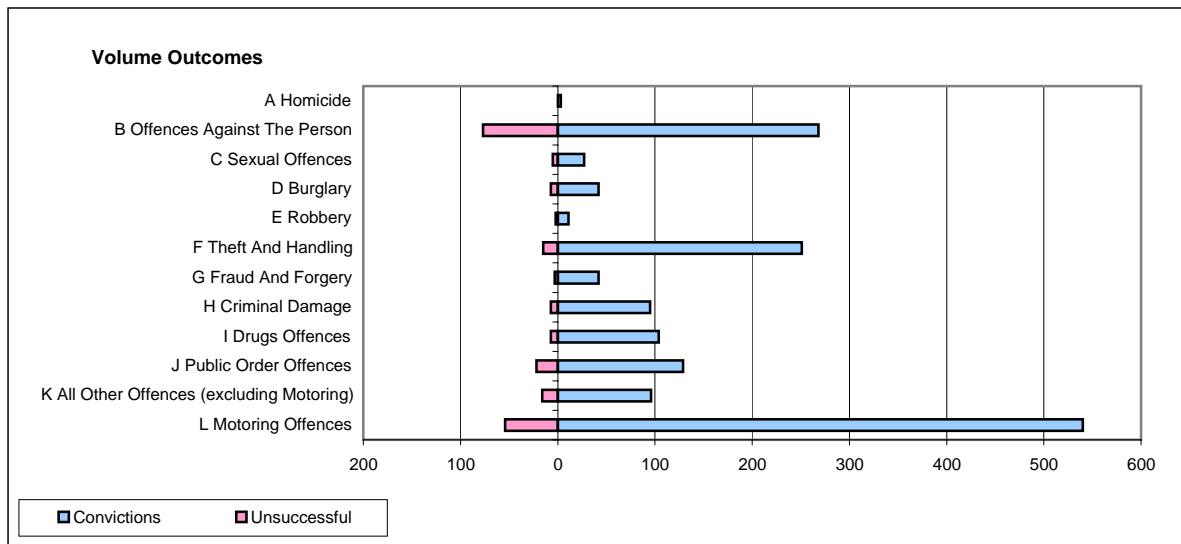
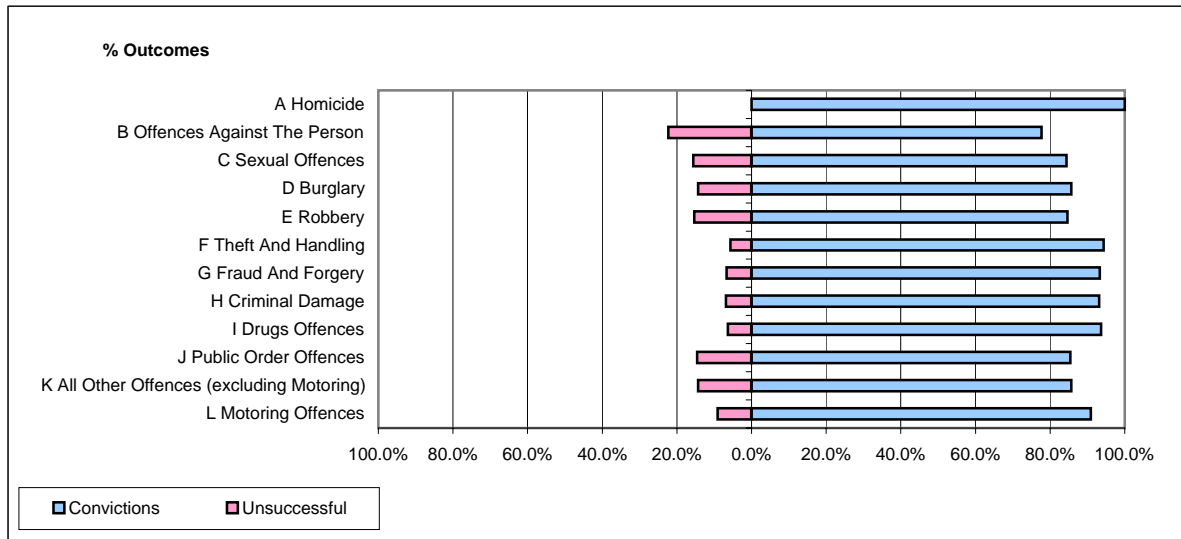


CPS OUTCOMES BY PRINCIPAL OFFENCE CATEGORY

July 2008

P37-Sussex



	Convictions		Unsuccessful	
	Number of Defendants	%	Number of Defendants	%
A Homicide	3	100.0%	0	0.0%
B Offences Against The Person	268	77.7%	77	22.3%
C Sexual Offences	27	84.4%	5	15.6%
D Burglary	42	85.7%	7	14.3%
E Robbery	11	84.6%	2	15.4%
F Theft And Handling	251	94.4%	15	5.6%
G Fraud And Forgery	42	93.3%	3	6.7%
H Criminal Damage	95	93.1%	7	6.9%
I Drugs Offences	104	93.7%	7	6.3%
J Public Order Offences	129	85.4%	22	14.6%
K All Other Offences (excluding Motoring)	96	85.7%	16	14.3%
L Motoring Offences	540	90.9%	54	9.1%
Admin Finalisations	0	0.0%	20	100.0%
TOTAL	1,608	87.2%	235	12.8%