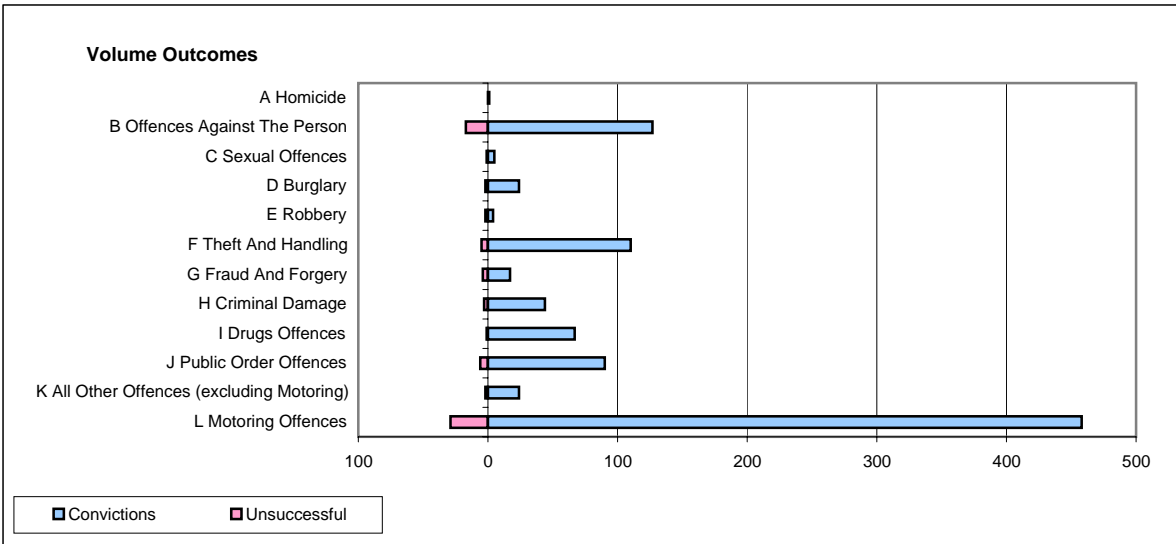
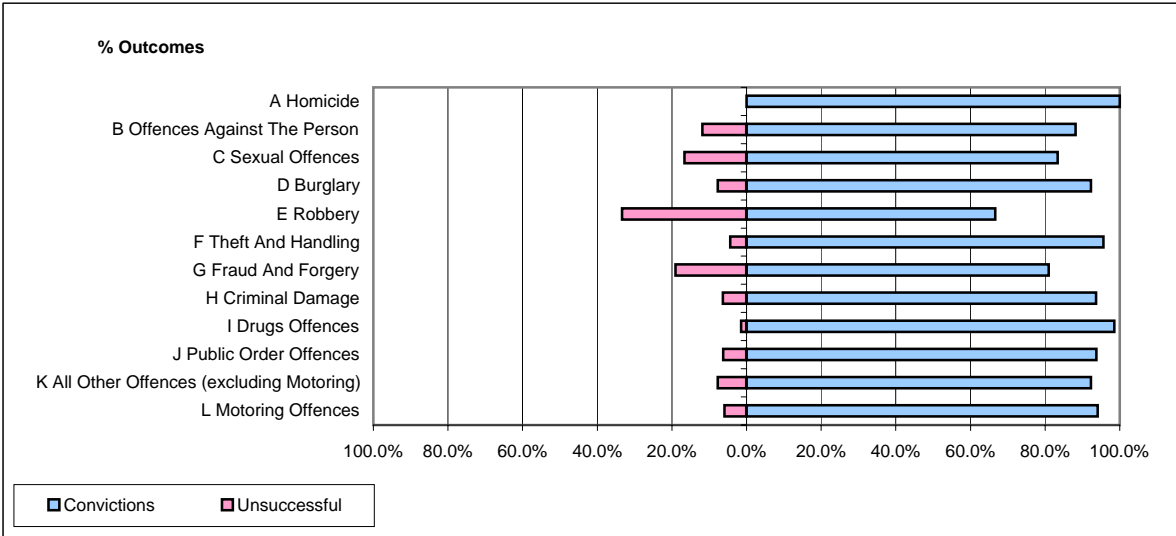


**CPS OUTCOMES BY PRINCIPAL OFFENCE CATEGORY**

**July 2008**

**P35-Suffolk**



	Convictions		Unsuccessful	
	Number of Defendants	%	Number of Defendants	%
<b>A Homicide</b>	<b>1</b>	<b>100.0%</b>	<b>0</b>	<b>0.0%</b>
<b>B Offences Against The Person</b>	<b>127</b>	<b>88.2%</b>	<b>17</b>	<b>11.8%</b>
<b>C Sexual Offences</b>	<b>5</b>	<b>83.3%</b>	<b>1</b>	<b>16.7%</b>
<b>D Burglary</b>	<b>24</b>	<b>92.3%</b>	<b>2</b>	<b>7.7%</b>
<b>E Robbery</b>	<b>4</b>	<b>66.7%</b>	<b>2</b>	<b>33.3%</b>
<b>F Theft And Handling</b>	<b>110</b>	<b>95.7%</b>	<b>5</b>	<b>4.3%</b>
<b>G Fraud And Forgery</b>	<b>17</b>	<b>81.0%</b>	<b>4</b>	<b>19.0%</b>
<b>H Criminal Damage</b>	<b>44</b>	<b>93.6%</b>	<b>3</b>	<b>6.4%</b>
<b>I Drugs Offences</b>	<b>67</b>	<b>98.5%</b>	<b>1</b>	<b>1.5%</b>
<b>J Public Order Offences</b>	<b>90</b>	<b>93.8%</b>	<b>6</b>	<b>6.3%</b>
<b>K All Other Offences (excluding Motoring)</b>	<b>24</b>	<b>92.3%</b>	<b>2</b>	<b>7.7%</b>
<b>L Motoring Offences</b>	<b>458</b>	<b>94.0%</b>	<b>29</b>	<b>6.0%</b>
<b>Admin Finalisations</b>	<b>0</b>	<b>0.0%</b>	<b>12</b>	<b>100.0%</b>
<b>TOTAL</b>	<b>971</b>	<b>92.0%</b>	<b>84</b>	<b>8.0%</b>