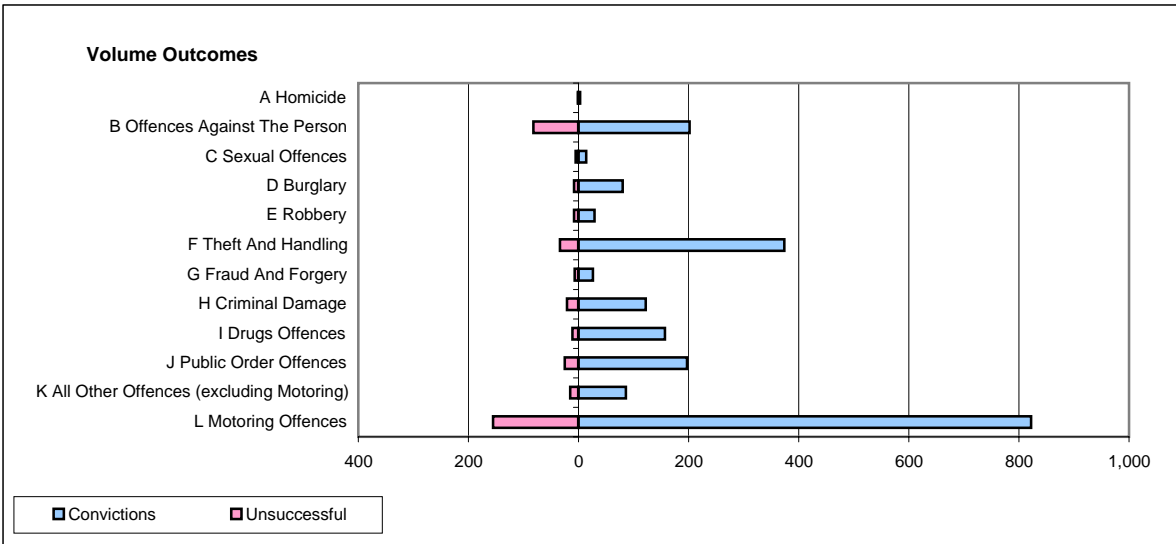
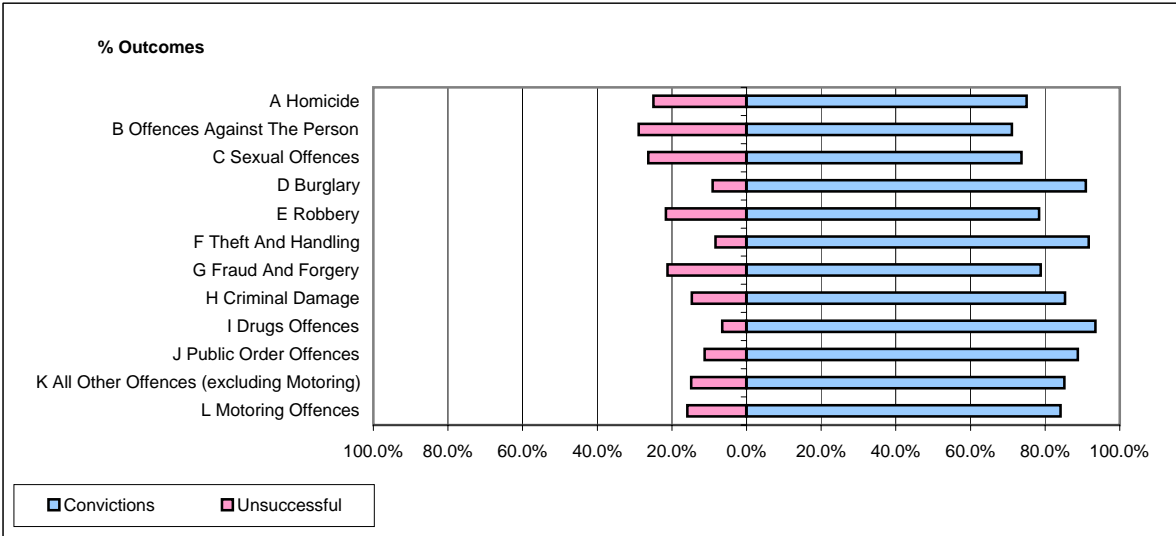


CPS OUTCOMES BY PRINCIPAL OFFENCE CATEGORY

July 2008

P32-SouthWales



	Convictions		Unsuccessful	
	Number of Defendants	%	Number of Defendants	%
A Homicide	3	75.0%	1	25.0%
B Offences Against The Person	202	71.1%	82	28.9%
C Sexual Offences	14	73.7%	5	26.3%
D Burglary	80	90.9%	8	9.1%
E Robbery	29	78.4%	8	21.6%
F Theft And Handling	374	91.7%	34	8.3%
G Fraud And Forgery	26	78.8%	7	21.2%
H Criminal Damage	122	85.3%	21	14.7%
I Drugs Offences	157	93.5%	11	6.5%
J Public Order Offences	197	88.7%	25	11.3%
K All Other Offences (excluding Motoring)	86	85.1%	15	14.9%
L Motoring Offences	822	84.1%	155	15.9%
Admin Finalisations	0	0.0%	57	100.0%
TOTAL	2,112	83.1%	429	16.9%