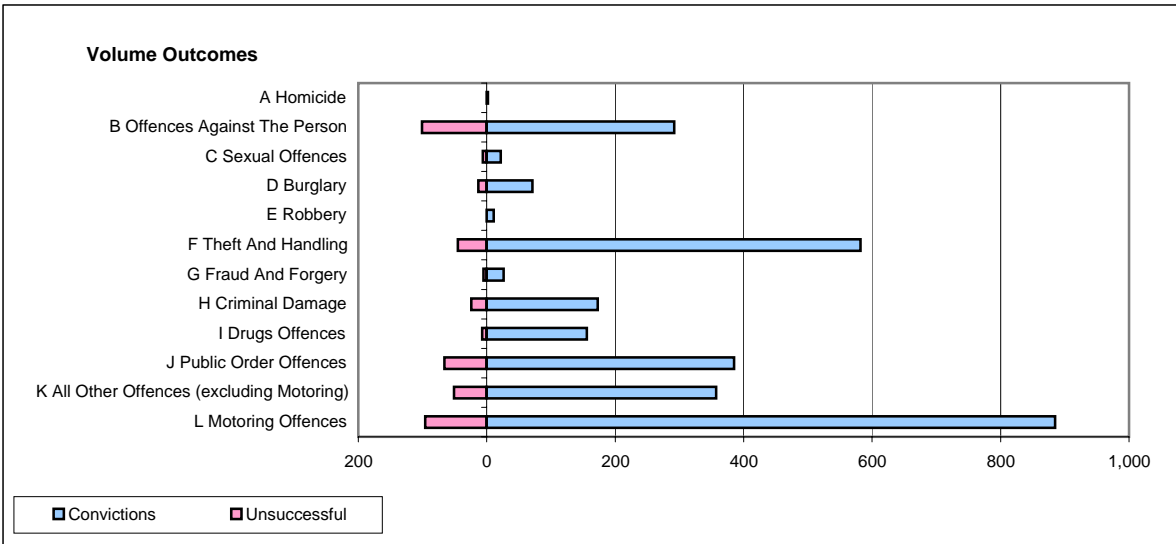
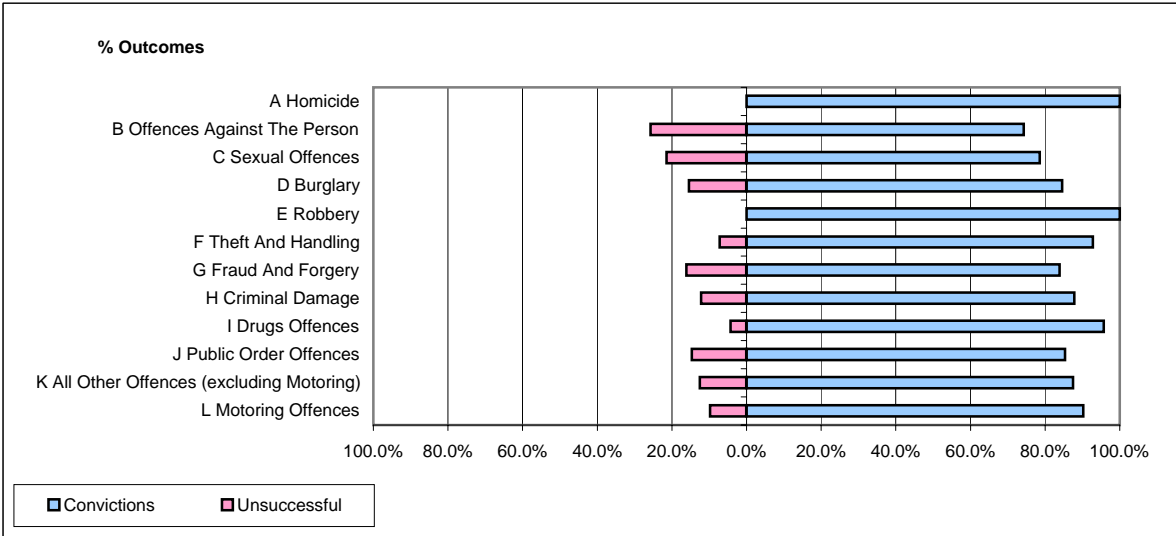


**CPS OUTCOMES BY PRINCIPAL OFFENCE CATEGORY**

**July 2008**

**P28-Northumbria**



	Convictions		Unsuccessful	
	Number of Defendants	%	Number of Defendants	%
<b>A Homicide</b>	<b>2</b>	<b>100.0%</b>	<b>0</b>	<b>0.0%</b>
<b>B Offences Against The Person</b>	<b>292</b>	<b>74.3%</b>	<b>101</b>	<b>25.7%</b>
<b>C Sexual Offences</b>	<b>22</b>	<b>78.6%</b>	<b>6</b>	<b>21.4%</b>
<b>D Burglary</b>	<b>71</b>	<b>84.5%</b>	<b>13</b>	<b>15.5%</b>
<b>E Robbery</b>	<b>11</b>	<b>100.0%</b>	<b>0</b>	<b>0.0%</b>
<b>F Theft And Handling</b>	<b>582</b>	<b>92.8%</b>	<b>45</b>	<b>7.2%</b>
<b>G Fraud And Forgery</b>	<b>26</b>	<b>83.9%</b>	<b>5</b>	<b>16.1%</b>
<b>H Criminal Damage</b>	<b>173</b>	<b>87.8%</b>	<b>24</b>	<b>12.2%</b>
<b>I Drugs Offences</b>	<b>156</b>	<b>95.7%</b>	<b>7</b>	<b>4.3%</b>
<b>J Public Order Offences</b>	<b>385</b>	<b>85.4%</b>	<b>66</b>	<b>14.6%</b>
<b>K All Other Offences (excluding Motoring)</b>	<b>357</b>	<b>87.5%</b>	<b>51</b>	<b>12.5%</b>
<b>L Motoring Offences</b>	<b>885</b>	<b>90.2%</b>	<b>96</b>	<b>9.8%</b>
<b>Admin Finalisations</b>	<b>0</b>	<b>0.0%</b>	<b>24</b>	<b>100.0%</b>
<b>TOTAL</b>	<b>2,962</b>	<b>87.1%</b>	<b>438</b>	<b>12.9%</b>