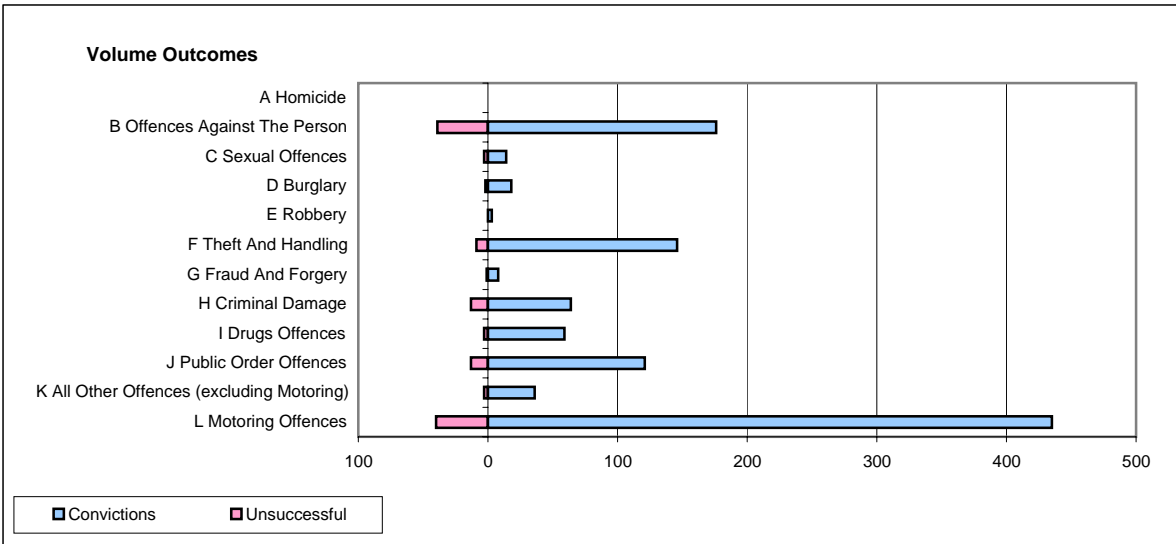
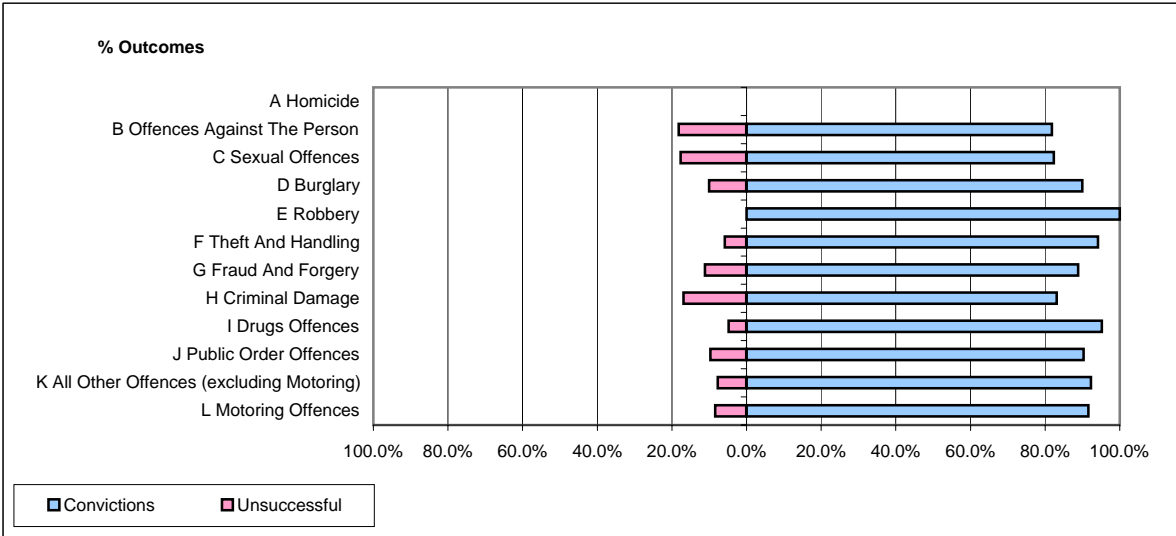


CPS OUTCOMES BY PRINCIPAL OFFENCE CATEGORY

July 2008

P26-Norfolk



	Convictions		Unsuccessful	
	Number of Defendants	%	Number of Defendants	%
A Homicide	0	0	0	0
B Offences Against The Person	176	81.9%	39	18.1%
C Sexual Offences	14	82.4%	3	17.6%
D Burglary	18	90.0%	2	10.0%
E Robbery	3	100.0%	0	0.0%
F Theft And Handling	146	94.2%	9	5.8%
G Fraud And Forgery	8	88.9%	1	11.1%
H Criminal Damage	64	83.1%	13	16.9%
I Drugs Offences	59	95.2%	3	4.8%
J Public Order Offences	121	90.3%	13	9.7%
K All Other Offences (excluding Motoring)	36	92.3%	3	7.7%
L Motoring Offences	435	91.6%	40	8.4%
Admin Finalisations	0	0.0%	18	100.0%
TOTAL	1,080	88.2%	144	11.8%