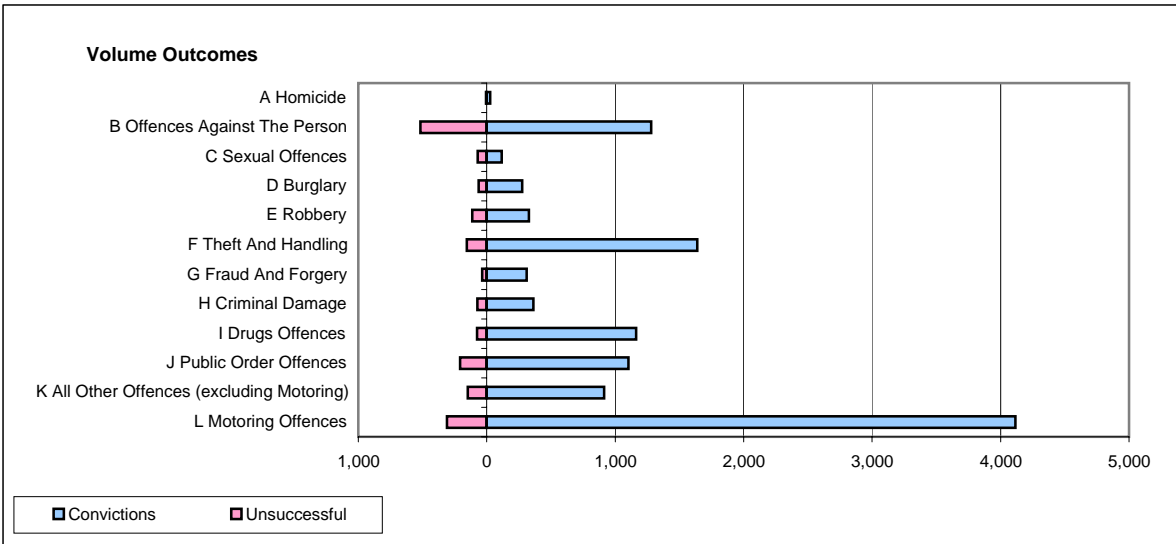
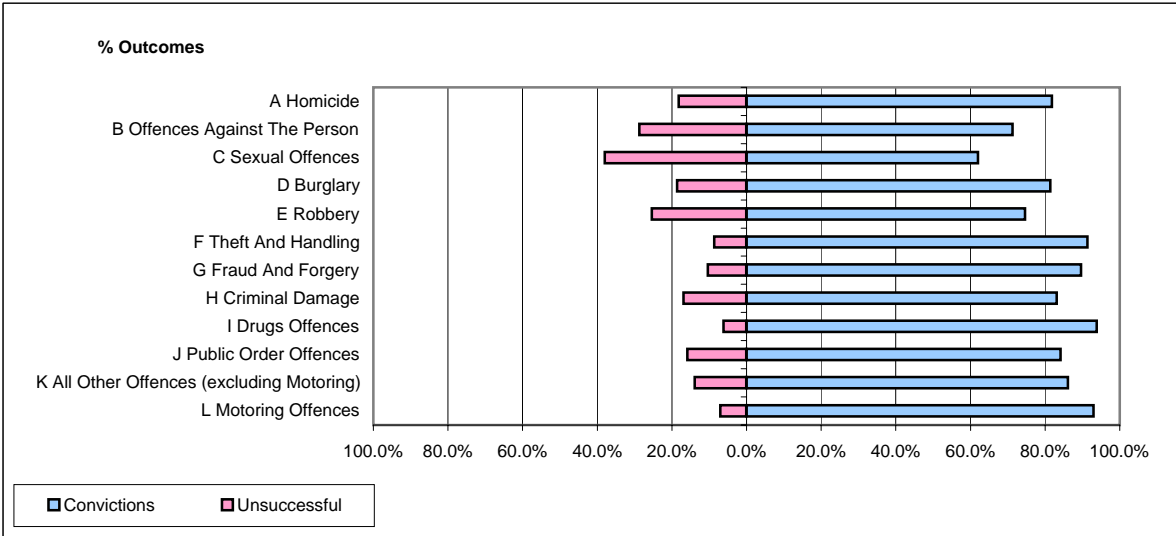


CPS OUTCOMES BY PRINCIPAL OFFENCE CATEGORY

July 2008

P25-Metropolitan&City



	Convictions		Unsuccessful	
	Number of Defendants	%	Number of Defendants	%
A Homicide	27	81.8%	6	18.2%
B Offences Against The Person	1,279	71.3%	516	28.7%
C Sexual Offences	116	62.0%	71	38.0%
D Burglary	276	81.4%	63	18.6%
E Robbery	329	74.6%	112	25.4%
F Theft And Handling	1,638	91.3%	156	8.7%
G Fraud And Forgery	310	89.6%	36	10.4%
H Criminal Damage	363	83.1%	74	16.9%
I Drugs Offences	1,163	93.9%	76	6.1%
J Public Order Offences	1,102	84.1%	208	15.9%
K All Other Offences (excluding Motoring)	913	86.1%	147	13.9%
L Motoring Offences	4,116	93.0%	310	7.0%
Admin Finalisations	0	0.0%	394	100.0%
TOTAL	11,632	84.3%	2,169	15.7%