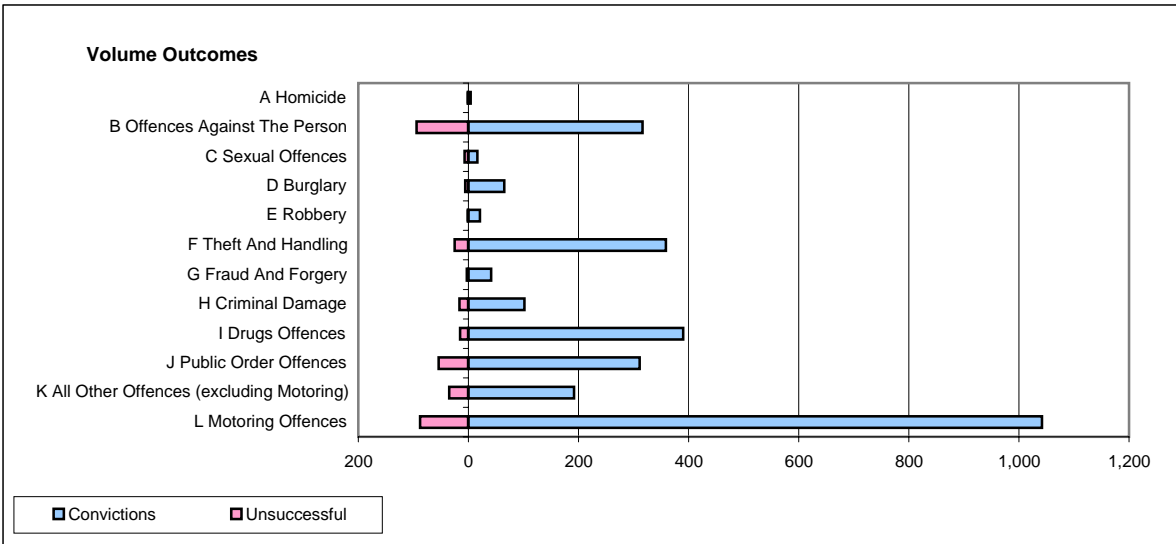
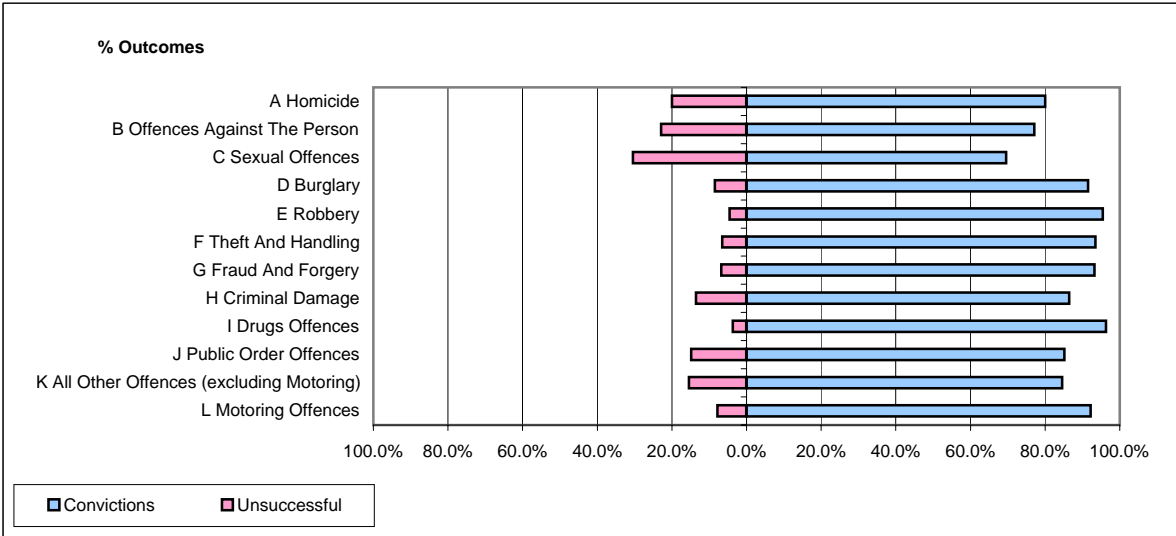


**CPS OUTCOMES BY PRINCIPAL OFFENCE CATEGORY**

**July 2008**

**P24-Merseyside**



	Convictions		Unsuccessful	
	Number of Defendants	%	Number of Defendants	%
<b>A Homicide</b>	<b>4</b>	<b>80.0%</b>	<b>1</b>	<b>20.0%</b>
<b>B Offences Against The Person</b>	<b>316</b>	<b>77.1%</b>	<b>94</b>	<b>22.9%</b>
<b>C Sexual Offences</b>	<b>16</b>	<b>69.6%</b>	<b>7</b>	<b>30.4%</b>
<b>D Burglary</b>	<b>65</b>	<b>91.5%</b>	<b>6</b>	<b>8.5%</b>
<b>E Robbery</b>	<b>21</b>	<b>95.5%</b>	<b>1</b>	<b>4.5%</b>
<b>F Theft And Handling</b>	<b>359</b>	<b>93.5%</b>	<b>25</b>	<b>6.5%</b>
<b>G Fraud And Forgery</b>	<b>41</b>	<b>93.2%</b>	<b>3</b>	<b>6.8%</b>
<b>H Criminal Damage</b>	<b>102</b>	<b>86.4%</b>	<b>16</b>	<b>13.6%</b>
<b>I Drugs Offences</b>	<b>390</b>	<b>96.3%</b>	<b>15</b>	<b>3.7%</b>
<b>J Public Order Offences</b>	<b>311</b>	<b>85.2%</b>	<b>54</b>	<b>14.8%</b>
<b>K All Other Offences (excluding Motoring)</b>	<b>192</b>	<b>84.6%</b>	<b>35</b>	<b>15.4%</b>
<b>L Motoring Offences</b>	<b>1,042</b>	<b>92.2%</b>	<b>88</b>	<b>7.8%</b>
<b>Admin Finalisations</b>	<b>0</b>	<b>0.0%</b>	<b>47</b>	<b>100.0%</b>
<b>TOTAL</b>	<b>2,859</b>	<b>87.9%</b>	<b>392</b>	<b>12.1%</b>