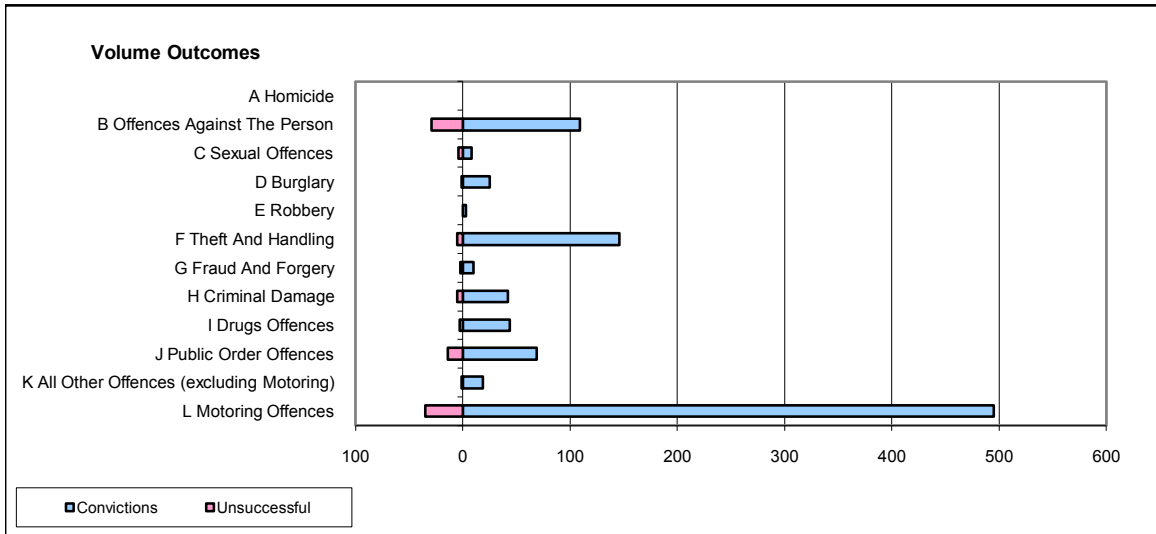
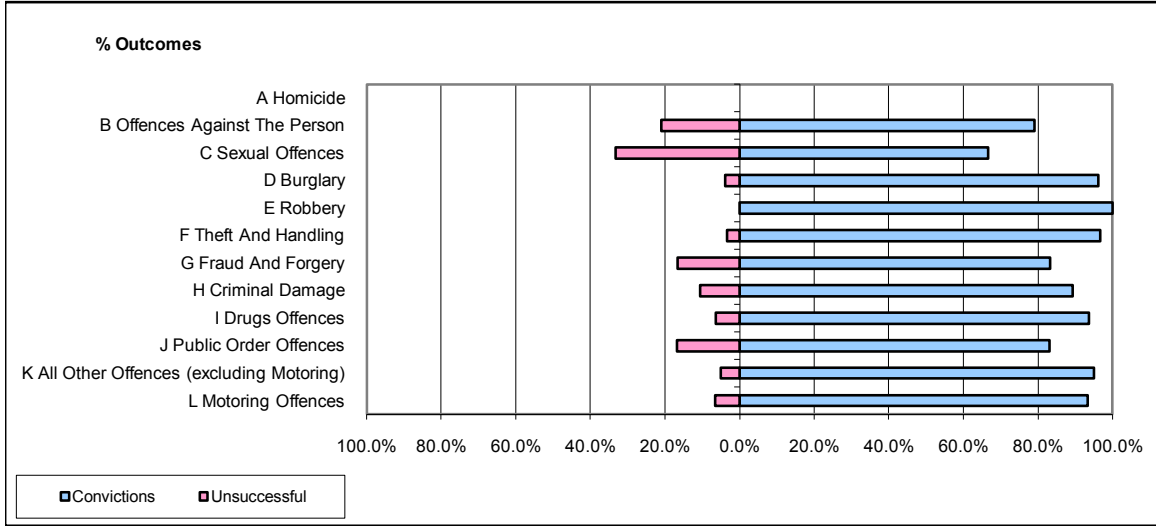


CPS OUTCOMES BY PRINCIPAL OFFENCE CATEGORY

July 2008

P23-Lincolnshire



	Convictions		Unsuccessful	
	Number of Defendants	%	Number of Defendants	%
A Homicide	0	0	0	0
B Offences Against The Person	109	79.0%	29	21.0%
C Sexual Offences	8	66.7%	4	33.3%
D Burglary	25	96.2%	1	3.8%
E Robbery	3	100.0%	0	0.0%
F Theft And Handling	146	96.7%	5	3.3%
G Fraud And Forgery	10	83.3%	2	16.7%
H Criminal Damage	42	89.4%	5	10.6%
I Drugs Offences	44	93.6%	3	6.4%
J Public Order Offences	69	83.1%	14	16.9%
K All Other Offences (excluding Motoring)	19	95.0%	1	5.0%
L Motoring Offences	495	93.4%	35	6.6%
Admin Finalisations	0	0.0%	14	100.0%
TOTAL	970	89.6%	113	10.4%