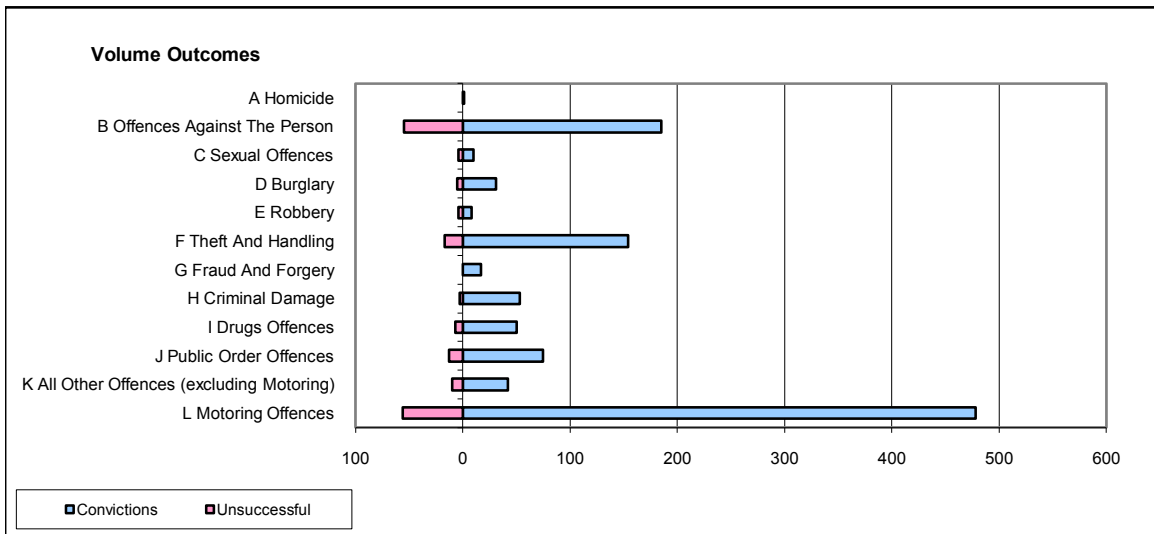
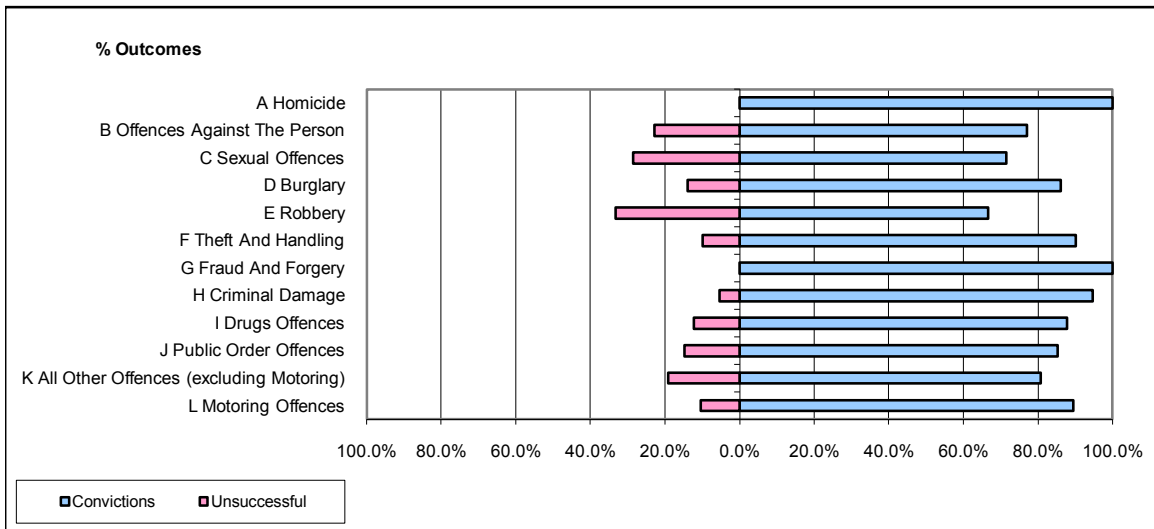


CPS OUTCOMES BY PRINCIPAL OFFENCE CATEGORY

July 2008

P22-Leicestershire



	Convictions		Unsuccessful	
	Number of Defendants	%	Number of Defendants	%
A Homicide	1	100.0%	0	0.0%
B Offences Against The Person	185	77.1%	55	22.9%
C Sexual Offences	10	71.4%	4	28.6%
D Burglary	31	86.1%	5	13.9%
E Robbery	8	66.7%	4	33.3%
F Theft And Handling	154	90.1%	17	9.9%
G Fraud And Forgery	17	100.0%	0	0.0%
H Criminal Damage	53	94.6%	3	5.4%
I Drugs Offences	50	87.7%	7	12.3%
J Public Order Offences	75	85.2%	13	14.8%
K All Other Offences (excluding Motoring)	42	80.8%	10	19.2%
L Motoring Offences	478	89.5%	56	10.5%
Admin Finalisations	0	0.0%	28	100.0%
TOTAL	1,104	84.5%	202	15.5%