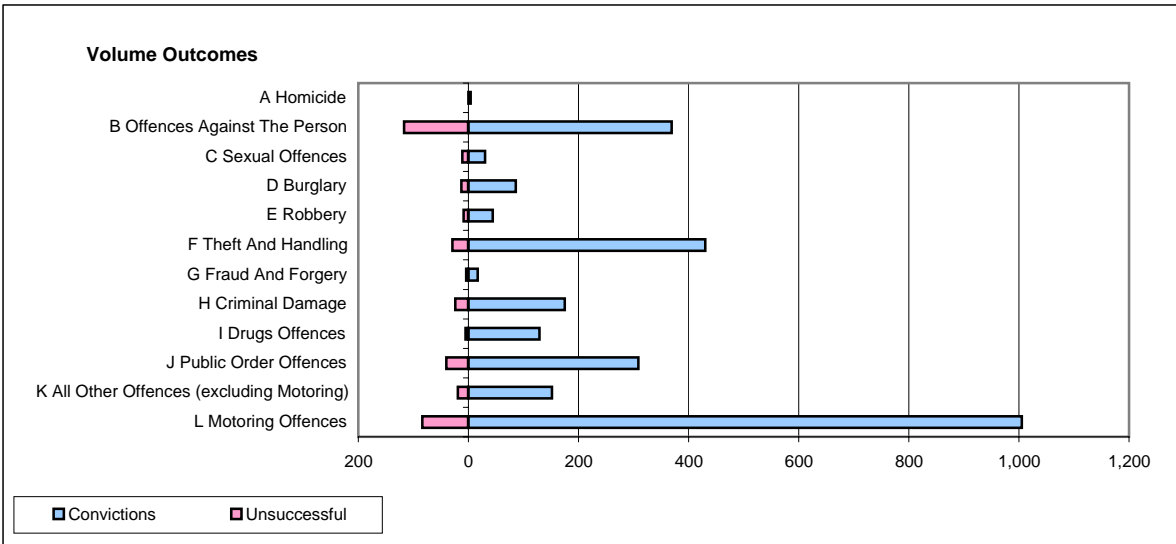
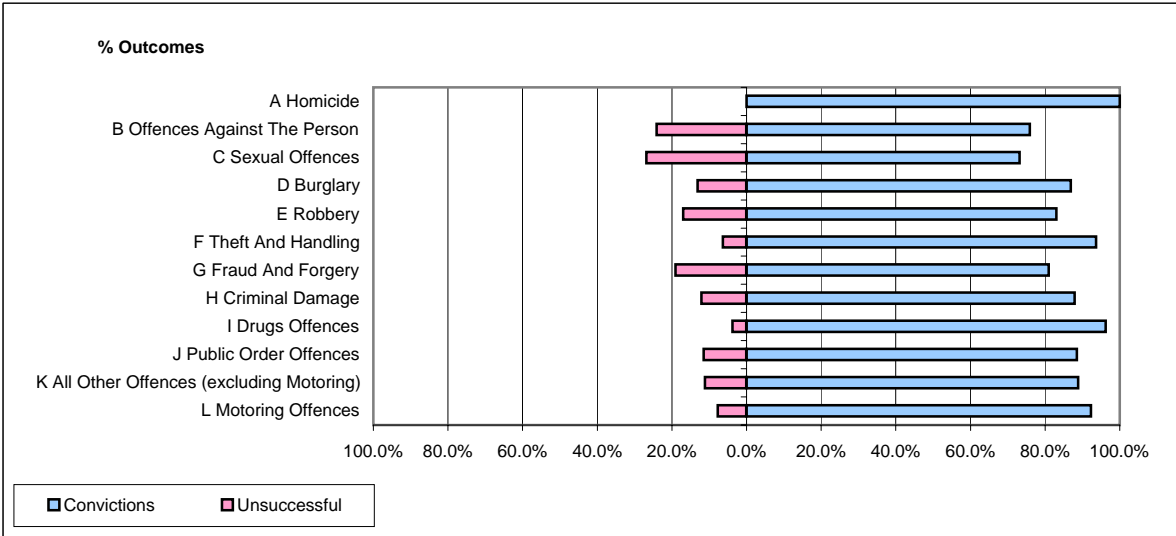


**CPS OUTCOMES BY PRINCIPAL OFFENCE CATEGORY**

**July 2008**

**P21-Lancashire**



	Convictions		Unsuccessful	
	Number of Defendants	%	Number of Defendants	%
<b>A Homicide</b>	<b>4</b>	<b>100.0%</b>	<b>0</b>	<b>0.0%</b>
<b>B Offences Against The Person</b>	<b>369</b>	<b>75.9%</b>	<b>117</b>	<b>24.1%</b>
<b>C Sexual Offences</b>	<b>30</b>	<b>73.2%</b>	<b>11</b>	<b>26.8%</b>
<b>D Burglary</b>	<b>86</b>	<b>86.9%</b>	<b>13</b>	<b>13.1%</b>
<b>E Robbery</b>	<b>44</b>	<b>83.0%</b>	<b>9</b>	<b>17.0%</b>
<b>F Theft And Handling</b>	<b>430</b>	<b>93.7%</b>	<b>29</b>	<b>6.3%</b>
<b>G Fraud And Forgery</b>	<b>17</b>	<b>81.0%</b>	<b>4</b>	<b>19.0%</b>
<b>H Criminal Damage</b>	<b>175</b>	<b>87.9%</b>	<b>24</b>	<b>12.1%</b>
<b>I Drugs Offences</b>	<b>129</b>	<b>96.3%</b>	<b>5</b>	<b>3.7%</b>
<b>J Public Order Offences</b>	<b>309</b>	<b>88.5%</b>	<b>40</b>	<b>11.5%</b>
<b>K All Other Offences (excluding Motoring)</b>	<b>152</b>	<b>88.9%</b>	<b>19</b>	<b>11.1%</b>
<b>L Motoring Offences</b>	<b>1,005</b>	<b>92.3%</b>	<b>84</b>	<b>7.7%</b>
<b>Admin Finalisations</b>	<b>0</b>	<b>0.0%</b>	<b>37</b>	<b>100.0%</b>
<b>TOTAL</b>	<b>2,750</b>	<b>87.5%</b>	<b>392</b>	<b>12.5%</b>