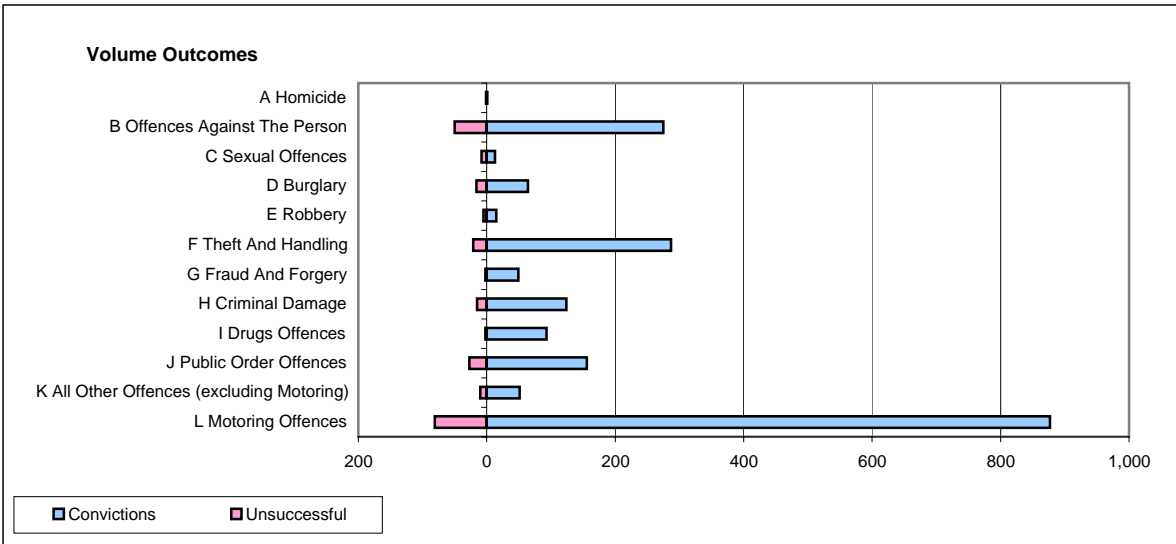
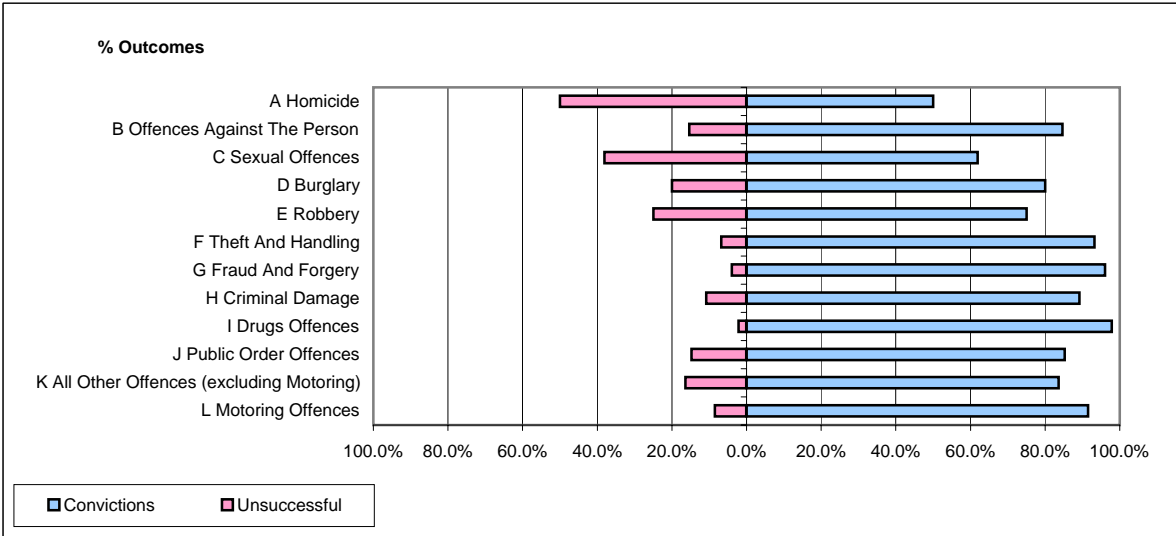


CPS OUTCOMES BY PRINCIPAL OFFENCE CATEGORY

July 2008

P20-Kent



	Convictions		Unsuccessful	
	Number of Defendants	%	Number of Defendants	%
A Homicide	1	50.0%	1	50.0%
B Offences Against The Person	275	84.6%	50	15.4%
C Sexual Offences	13	61.9%	8	38.1%
D Burglary	64	80.0%	16	20.0%
E Robbery	15	75.0%	5	25.0%
F Theft And Handling	287	93.2%	21	6.8%
G Fraud And Forgery	49	96.1%	2	3.9%
H Criminal Damage	124	89.2%	15	10.8%
I Drugs Offences	93	97.9%	2	2.1%
J Public Order Offences	156	85.2%	27	14.8%
K All Other Offences (excluding Motoring)	51	83.6%	10	16.4%
L Motoring Offences	877	91.5%	81	8.5%
Admin Finalisations	0	0.0%	38	100.0%
TOTAL	2,005	87.9%	276	12.1%