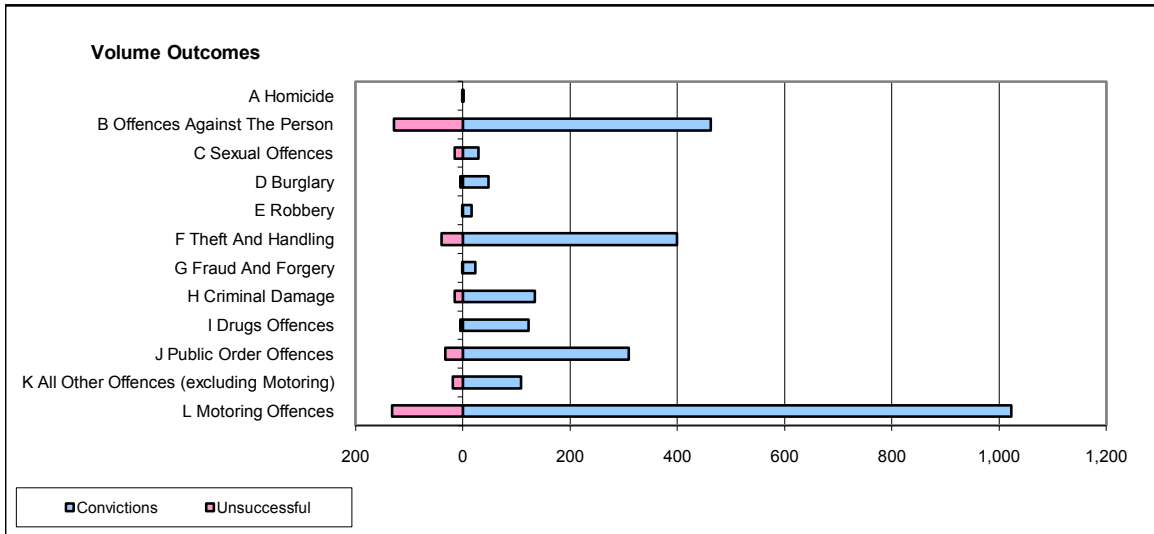
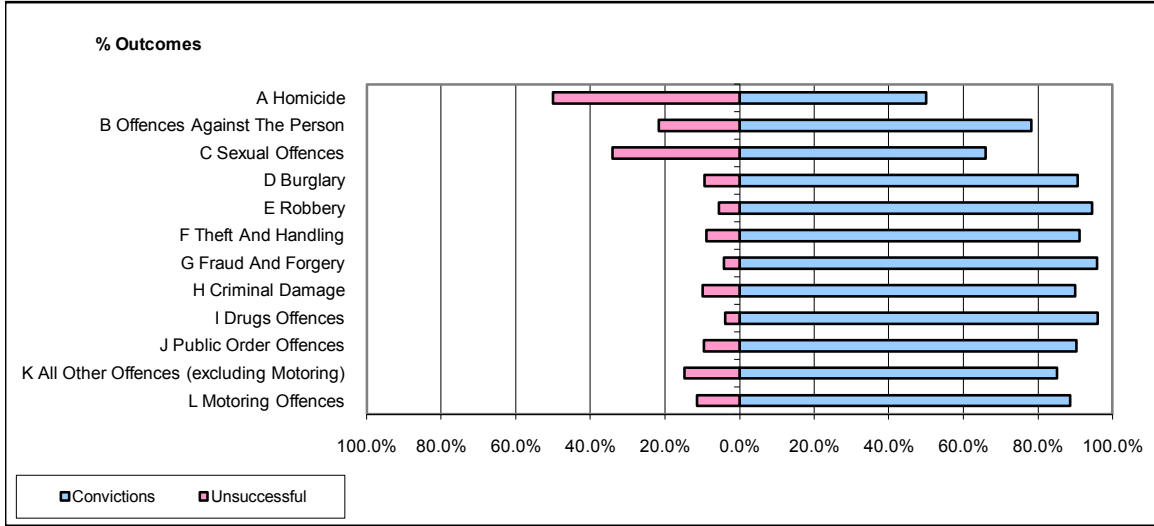


**CPS OUTCOMES BY PRINCIPAL OFFENCE CATEGORY**

**July 2008**

**P17-Hampshire**



	Convictions		Unsuccessful	
	Number of Defendants	%	Number of Defendants	%
<b>A Homicide</b>	<b>1</b>	<b>50.0%</b>	<b>1</b>	<b>50.0%</b>
<b>B Offences Against The Person</b>	<b>462</b>	<b>78.3%</b>	<b>128</b>	<b>21.7%</b>
<b>C Sexual Offences</b>	<b>29</b>	<b>65.9%</b>	<b>15</b>	<b>34.1%</b>
<b>D Burglary</b>	<b>48</b>	<b>90.6%</b>	<b>5</b>	<b>9.4%</b>
<b>E Robbery</b>	<b>17</b>	<b>94.4%</b>	<b>1</b>	<b>5.6%</b>
<b>F Theft And Handling</b>	<b>400</b>	<b>91.1%</b>	<b>39</b>	<b>8.9%</b>
<b>G Fraud And Forgery</b>	<b>23</b>	<b>95.8%</b>	<b>1</b>	<b>4.2%</b>
<b>H Criminal Damage</b>	<b>135</b>	<b>90.0%</b>	<b>15</b>	<b>10.0%</b>
<b>I Drugs Offences</b>	<b>123</b>	<b>96.1%</b>	<b>5</b>	<b>3.9%</b>
<b>J Public Order Offences</b>	<b>309</b>	<b>90.4%</b>	<b>33</b>	<b>9.6%</b>
<b>K All Other Offences (excluding Motoring)</b>	<b>109</b>	<b>85.2%</b>	<b>19</b>	<b>14.8%</b>
<b>L Motoring Offences</b>	<b>1,023</b>	<b>88.6%</b>	<b>132</b>	<b>11.4%</b>
<b>Admin Finalisations</b>	<b>0</b>	<b>0.0%</b>	<b>35</b>	<b>100.0%</b>
<b>TOTAL</b>	<b>2,679</b>	<b>86.2%</b>	<b>429</b>	<b>13.8%</b>