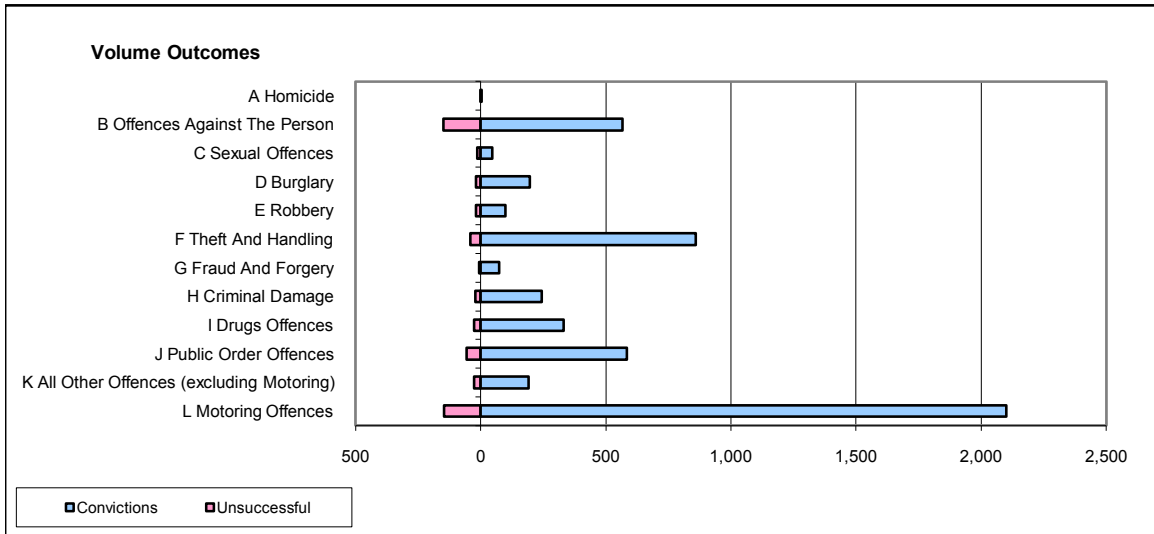
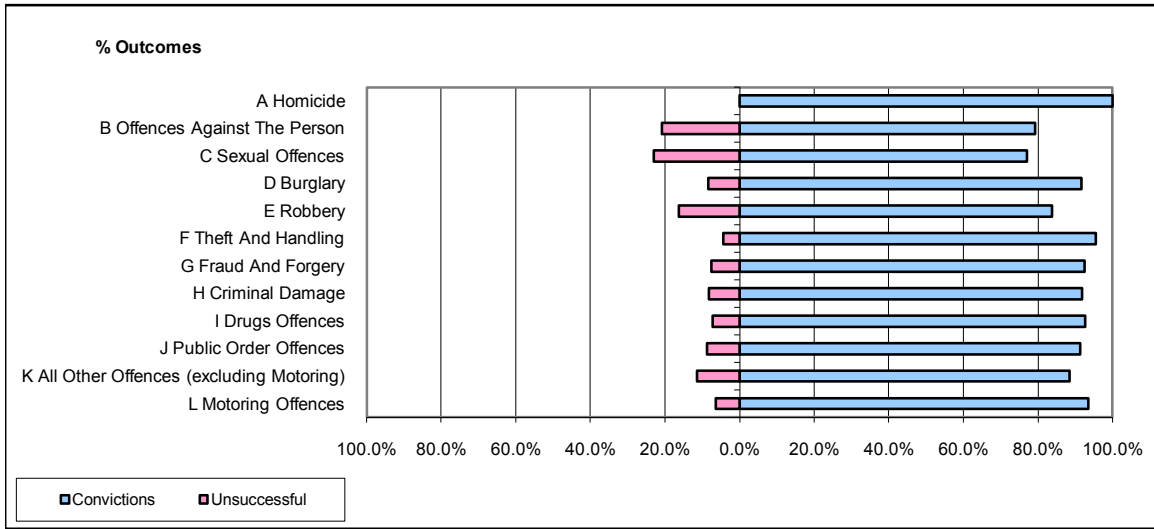


CPS OUTCOMES BY PRINCIPAL OFFENCE CATEGORY

July 2008

P15-GreaterManchester



	Convictions		Unsuccessful	
	Number of Defendants	%	Number of Defendants	%
A Homicide	4	100.0%	0	0.0%
B Offences Against The Person	568	79.2%	149	20.8%
C Sexual Offences	47	77.0%	14	23.0%
D Burglary	196	91.6%	18	8.4%
E Robbery	98	83.8%	19	16.2%
F Theft And Handling	860	95.6%	40	4.4%
G Fraud And Forgery	74	92.5%	6	7.5%
H Criminal Damage	245	91.8%	22	8.2%
I Drugs Offences	332	92.7%	26	7.3%
J Public Order Offences	584	91.3%	56	8.8%
K All Other Offences (excluding Motoring)	192	88.5%	25	11.5%
L Motoring Offences	2,101	93.5%	145	6.5%
Admin Finalisations	0	0.0%	74	100.0%
TOTAL	5,301	89.9%	594	10.1%