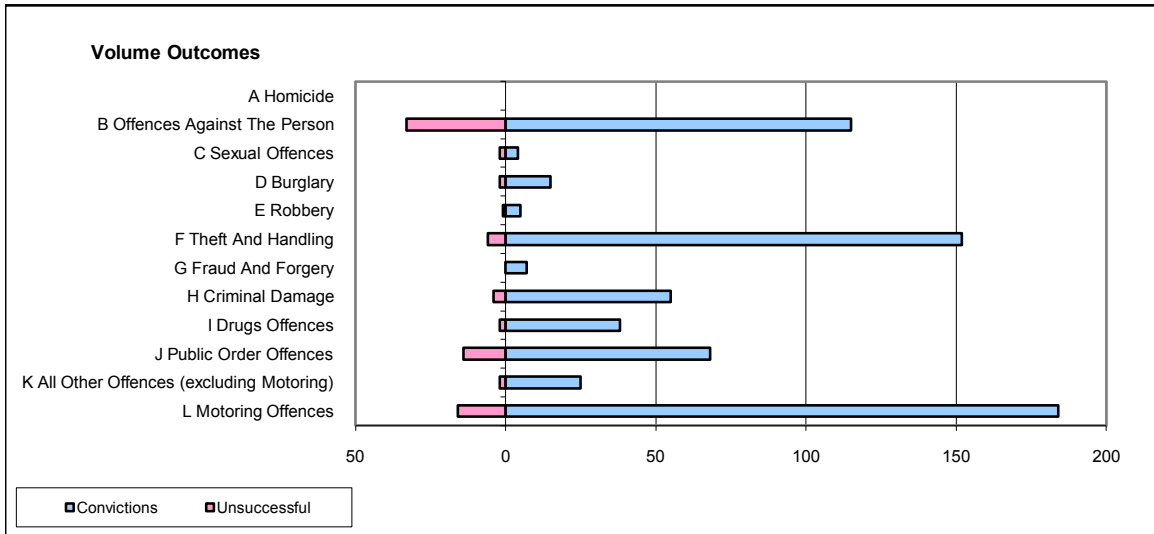
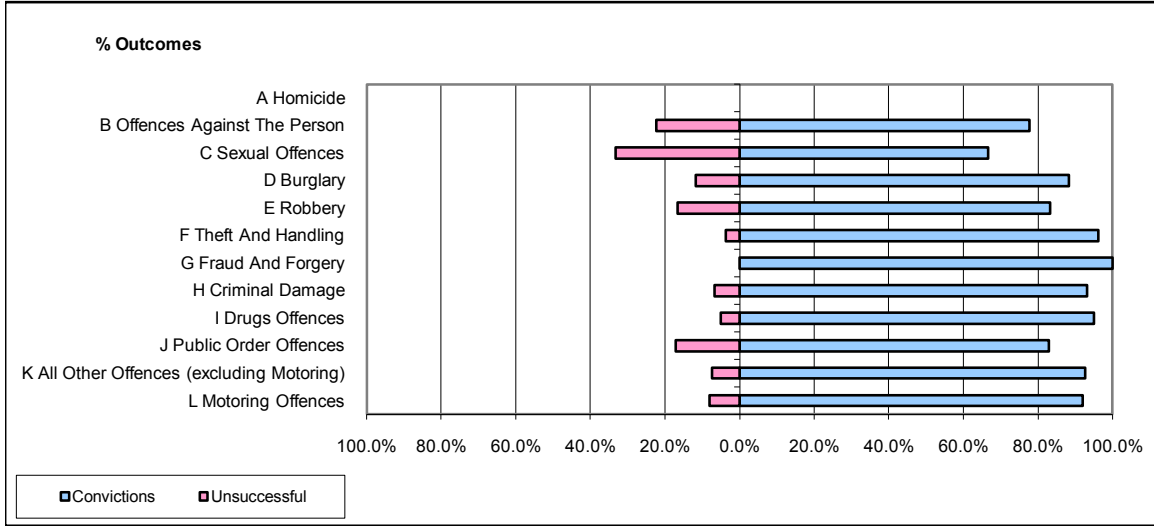


**CPS OUTCOMES BY PRINCIPAL OFFENCE CATEGORY**

July 2008

**P14-Gloucestershire**



	Convictions		Unsuccessful	
	Number of Defendants	%	Number of Defendants	%
<b>A Homicide</b>	0	0	0	0
<b>B Offences Against The Person</b>	115	77.7%	33	22.3%
<b>C Sexual Offences</b>	4	66.7%	2	33.3%
<b>D Burglary</b>	15	88.2%	2	11.8%
<b>E Robbery</b>	5	83.3%	1	16.7%
<b>F Theft And Handling</b>	152	96.2%	6	3.8%
<b>G Fraud And Forgery</b>	7	100.0%	0	0.0%
<b>H Criminal Damage</b>	55	93.2%	4	6.8%
<b>I Drugs Offences</b>	38	95.0%	2	5.0%
<b>J Public Order Offences</b>	68	82.9%	14	17.1%
<b>K All Other Offences (excluding Motoring)</b>	25	92.6%	2	7.4%
<b>L Motoring Offences</b>	184	92.0%	16	8.0%
<b>Admin Finalisations</b>	0	0.0%	5	100.0%
<b>TOTAL</b>	<b>668</b>	<b>88.5%</b>	<b>87</b>	<b>11.5%</b>