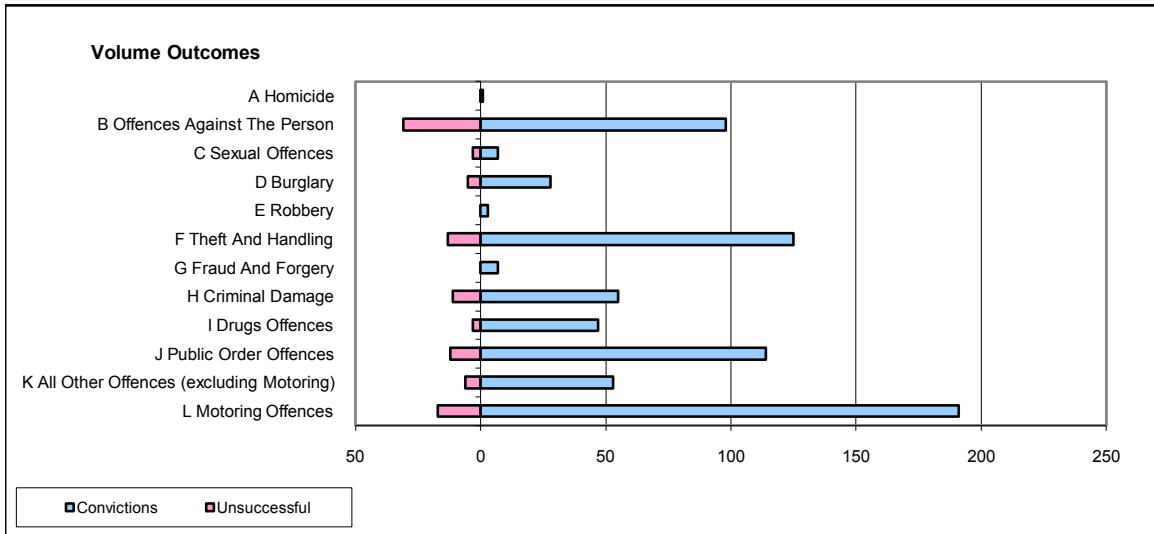
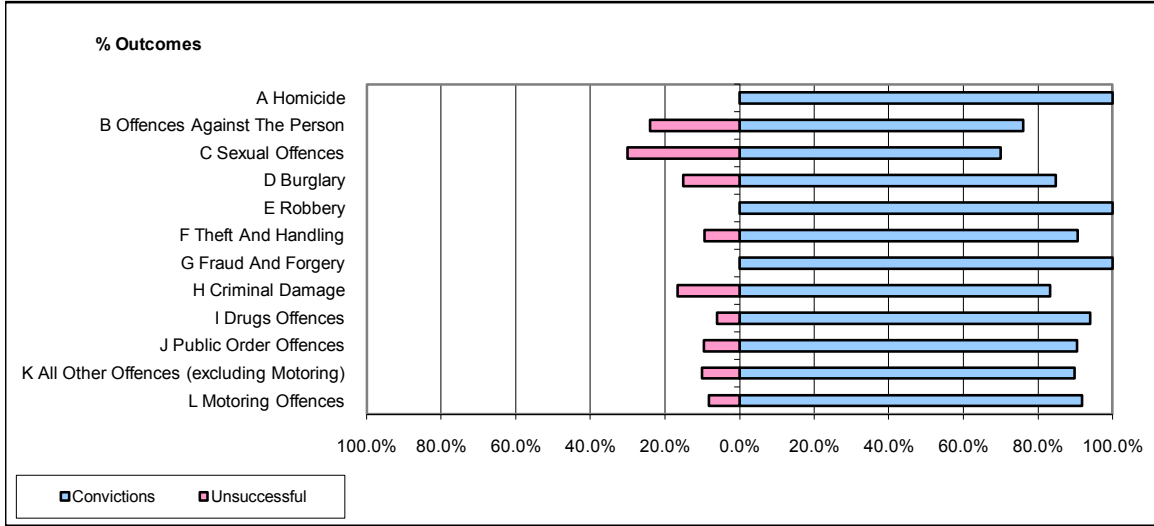


CPS OUTCOMES BY PRINCIPAL OFFENCE CATEGORY

July 2008

P11-Durham



	Convictions		Unsuccessful	
	Number of Defendants	%	Number of Defendants	%
A Homicide	1	100.0%	0	0.0%
B Offences Against The Person	98	76.0%	31	24.0%
C Sexual Offences	7	70.0%	3	30.0%
D Burglary	28	84.8%	5	15.2%
E Robbery	3	100.0%	0	0.0%
F Theft And Handling	125	90.6%	13	9.4%
G Fraud And Forgery	7	100.0%	0	0.0%
H Criminal Damage	55	83.3%	11	16.7%
I Drugs Offences	47	94.0%	3	6.0%
J Public Order Offences	114	90.5%	12	9.5%
K All Other Offences (excluding Motoring)	53	89.8%	6	10.2%
L Motoring Offences	191	91.8%	17	8.2%
Admin Finalisations	0	0.0%	14	100.0%
TOTAL	729	86.4%	115	13.6%