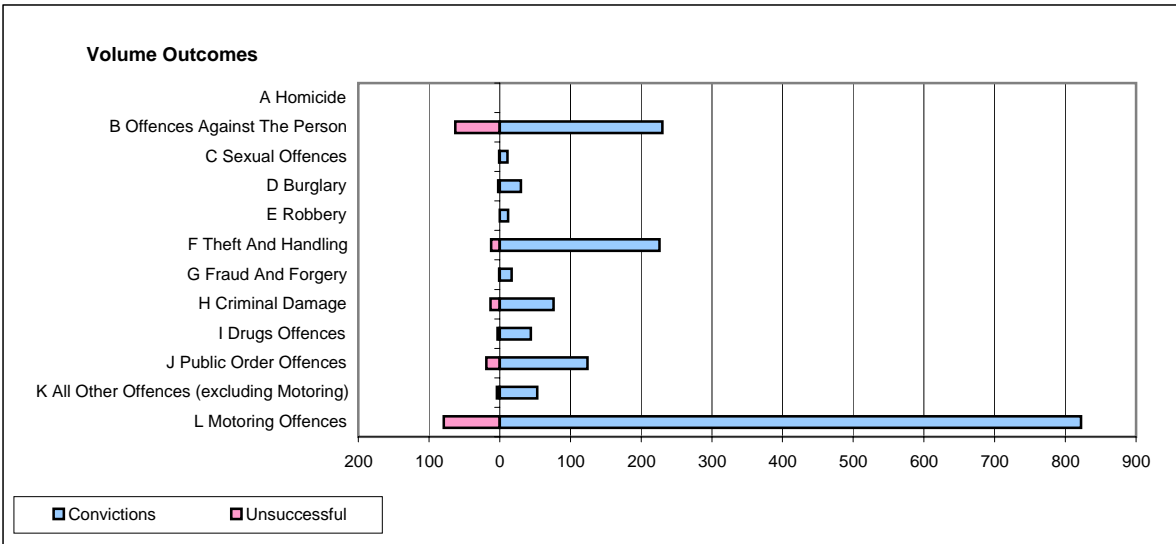
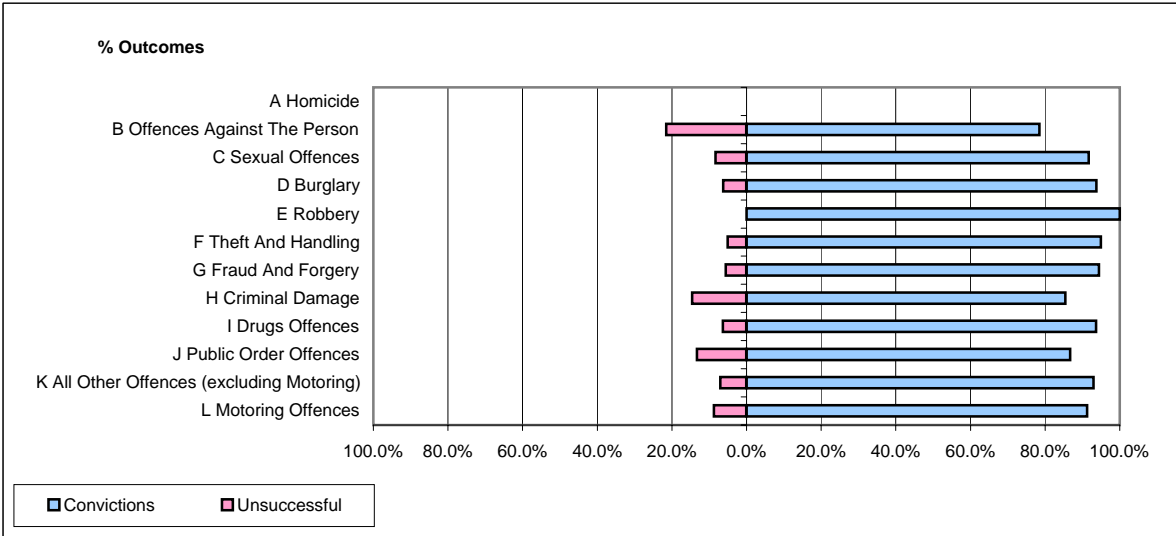


**CPS OUTCOMES BY PRINCIPAL OFFENCE CATEGORY**

**July 2008**

**P04-Cheshire**



	Convictions		Unsuccessful	
	Number of Defendants	%	Number of Defendants	%
<b>A Homicide</b>	<b>0</b>	<b>0</b>	<b>0</b>	<b>0</b>
<b>B Offences Against The Person</b>	<b>230</b>	<b>78.5%</b>	<b>63</b>	<b>21.5%</b>
<b>C Sexual Offences</b>	<b>11</b>	<b>91.7%</b>	<b>1</b>	<b>8.3%</b>
<b>D Burglary</b>	<b>30</b>	<b>93.8%</b>	<b>2</b>	<b>6.3%</b>
<b>E Robbery</b>	<b>12</b>	<b>100.0%</b>	<b>0</b>	<b>0.0%</b>
<b>F Theft And Handling</b>	<b>226</b>	<b>95.0%</b>	<b>12</b>	<b>5.0%</b>
<b>G Fraud And Forgery</b>	<b>17</b>	<b>94.4%</b>	<b>1</b>	<b>5.6%</b>
<b>H Criminal Damage</b>	<b>76</b>	<b>85.4%</b>	<b>13</b>	<b>14.6%</b>
<b>I Drugs Offences</b>	<b>44</b>	<b>93.6%</b>	<b>3</b>	<b>6.4%</b>
<b>J Public Order Offences</b>	<b>124</b>	<b>86.7%</b>	<b>19</b>	<b>13.3%</b>
<b>K All Other Offences (excluding Motoring)</b>	<b>53</b>	<b>93.0%</b>	<b>4</b>	<b>7.0%</b>
<b>L Motoring Offences</b>	<b>822</b>	<b>91.2%</b>	<b>79</b>	<b>8.8%</b>
<b>Admin Finalisations</b>	<b>0</b>	<b>0.0%</b>	<b>10</b>	<b>100.0%</b>
<b>TOTAL</b>	<b>1,645</b>	<b>88.8%</b>	<b>207</b>	<b>11.2%</b>