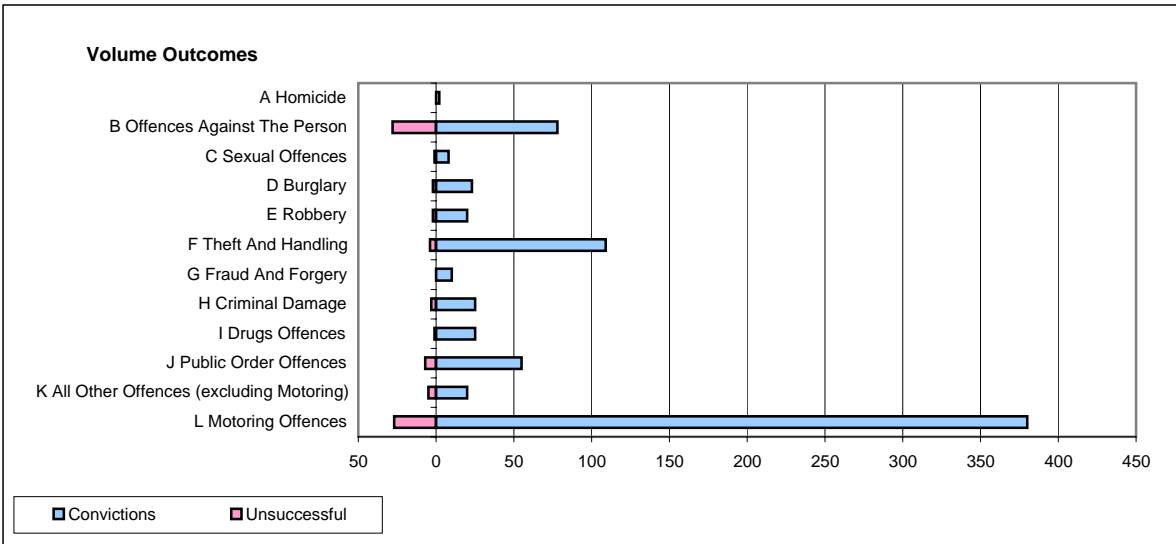
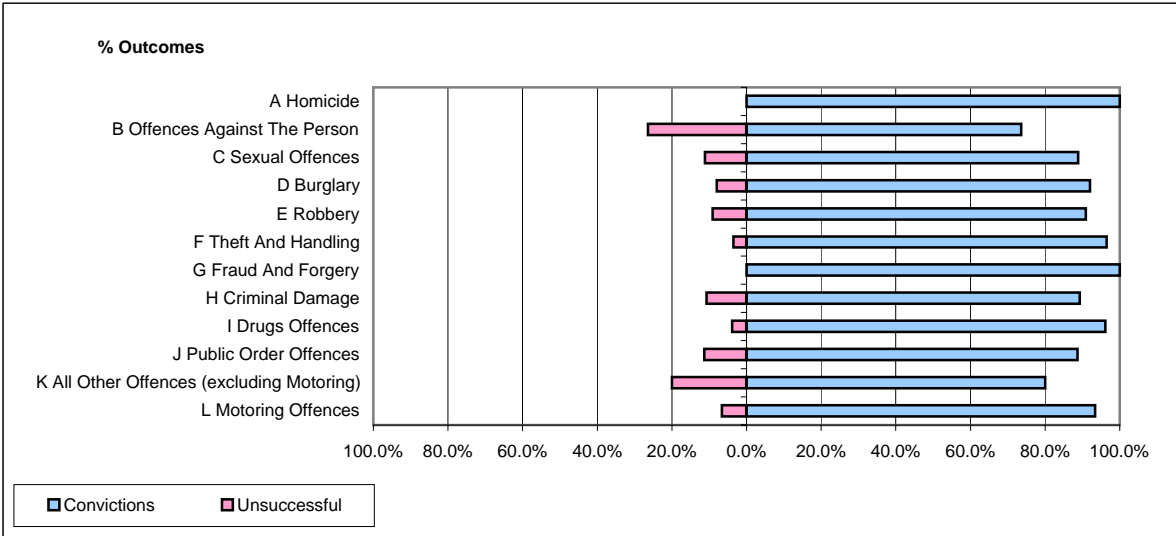


CPS OUTCOMES BY PRINCIPAL OFFENCE CATEGORY

July 2008

P02-Bedfordshire



	Convictions		Unsuccessful	
	Number of Defendants	%	Number of Defendants	%
A Homicide	2	100.0%	0	0.0%
B Offences Against The Person	78	73.6%	28	26.4%
C Sexual Offences	8	88.9%	1	11.1%
D Burglary	23	92.0%	2	8.0%
E Robbery	20	90.9%	2	9.1%
F Theft And Handling	109	96.5%	4	3.5%
G Fraud And Forgery	10	100.0%	0	0.0%
H Criminal Damage	25	89.3%	3	10.7%
I Drugs Offences	25	96.2%	1	3.8%
J Public Order Offences	55	88.7%	7	11.3%
K All Other Offences (excluding Motoring)	20	80.0%	5	20.0%
L Motoring Offences	380	93.4%	27	6.6%
Admin Finalisations	0	0.0%	8	100.0%
TOTAL	755	89.6%	88	10.4%