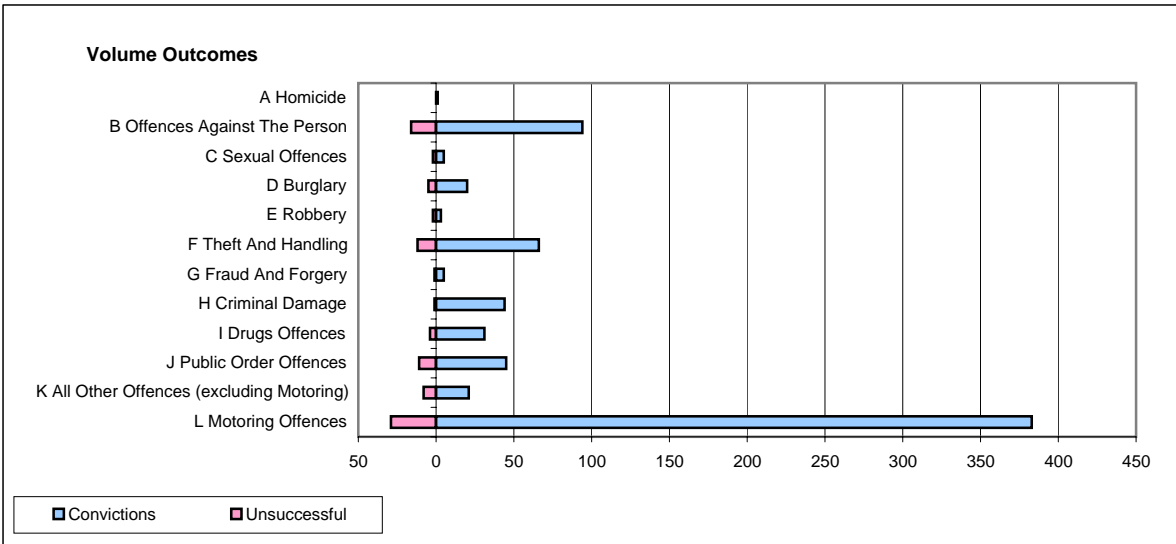
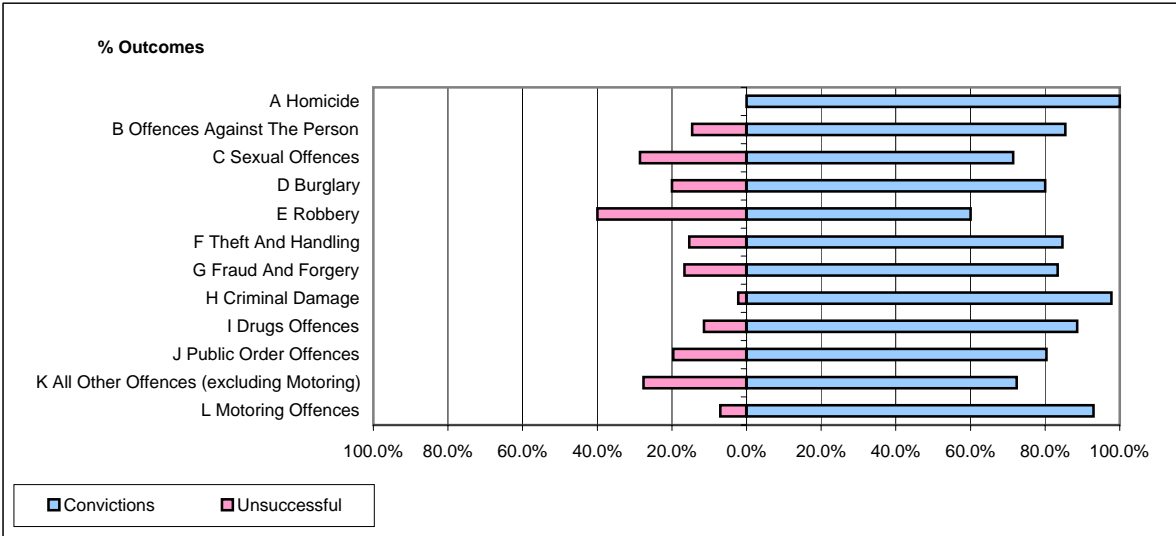


CPS OUTCOMES BY PRINCIPAL OFFENCE CATEGORY

June 2008

P43-Wiltshire



	Convictions		Unsuccessful	
	Number of Defendants	%	Number of Defendants	%
A Homicide	1	100.0%	0	0.0%
B Offences Against The Person	94	85.5%	16	14.5%
C Sexual Offences	5	71.4%	2	28.6%
D Burglary	20	80.0%	5	20.0%
E Robbery	3	60.0%	2	40.0%
F Theft And Handling	66	84.6%	12	15.4%
G Fraud And Forgery	5	83.3%	1	16.7%
H Criminal Damage	44	97.8%	1	2.2%
I Drugs Offences	31	88.6%	4	11.4%
J Public Order Offences	45	80.4%	11	19.6%
K All Other Offences (excluding Motoring)	21	72.4%	8	27.6%
L Motoring Offences	383	93.0%	29	7.0%
Admin Finalisations	0	0.0%	6	100.0%
TOTAL	718	88.1%	97	11.9%