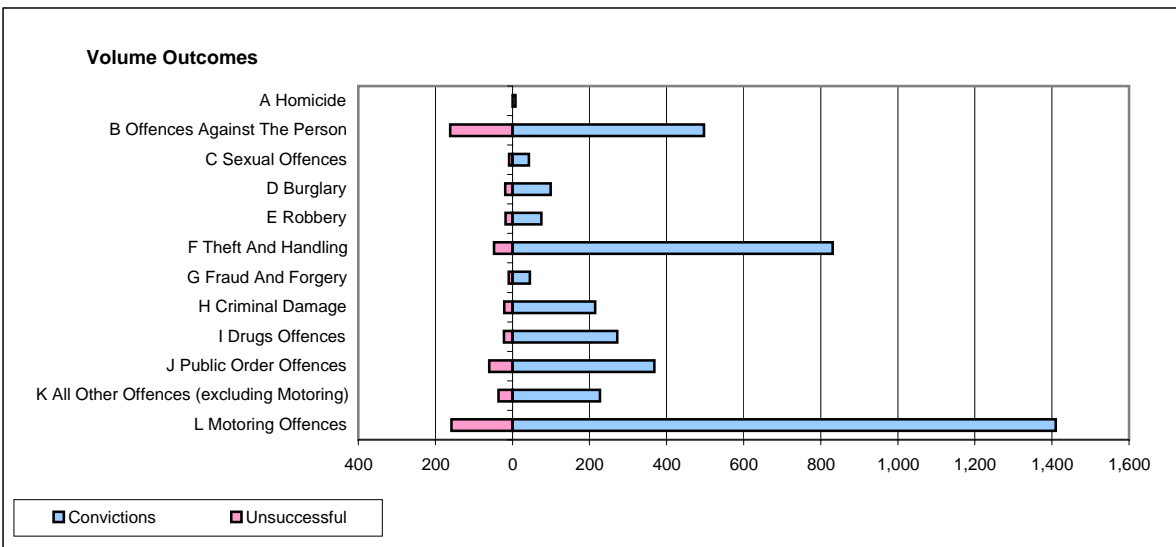
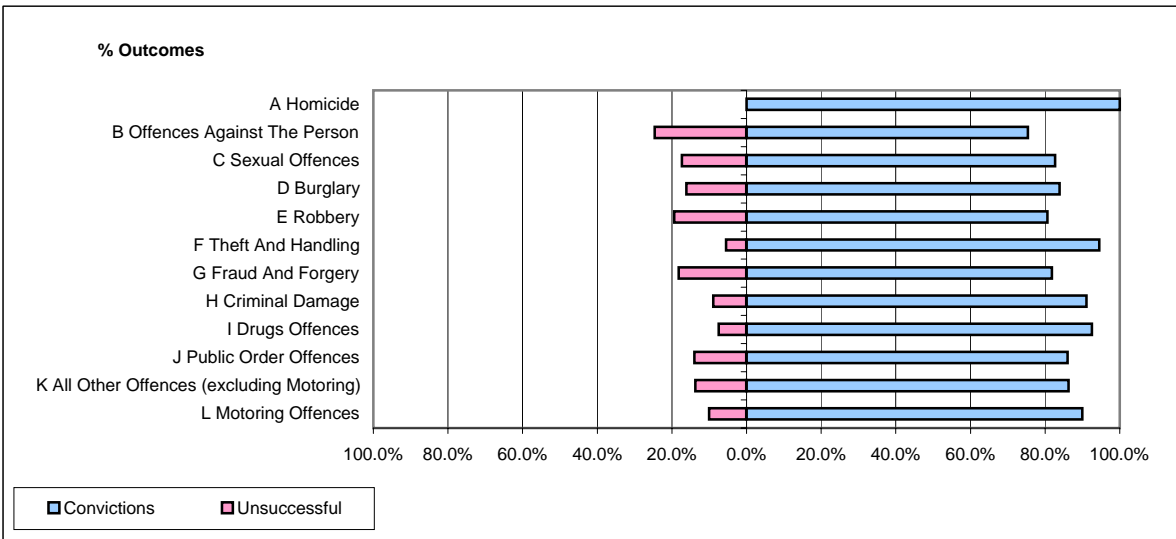


CPS OUTCOMES BY PRINCIPAL OFFENCE CATEGORY

June 2008

P41-WestMidlands



	Convictions		Unsuccessful	
	Number of Defendants	%	Number of Defendants	%
A Homicide	8	100.0%	0	0.0%
B Offences Against The Person	497	75.4%	162	24.6%
C Sexual Offences	43	82.7%	9	17.3%
D Burglary	99	83.9%	19	16.1%
E Robbery	75	80.6%	18	19.4%
F Theft And Handling	831	94.5%	48	5.5%
G Fraud And Forgery	45	81.8%	10	18.2%
H Criminal Damage	215	91.1%	21	8.9%
I Drugs Offences	272	92.5%	22	7.5%
J Public Order Offences	368	86.0%	60	14.0%
K All Other Offences (excluding Motoring)	227	86.3%	36	13.7%
L Motoring Offences	1,410	89.9%	158	10.1%
Admin Finalisations	0	0.0%	36	100.0%
TOTAL	4,090	87.2%	599	12.8%