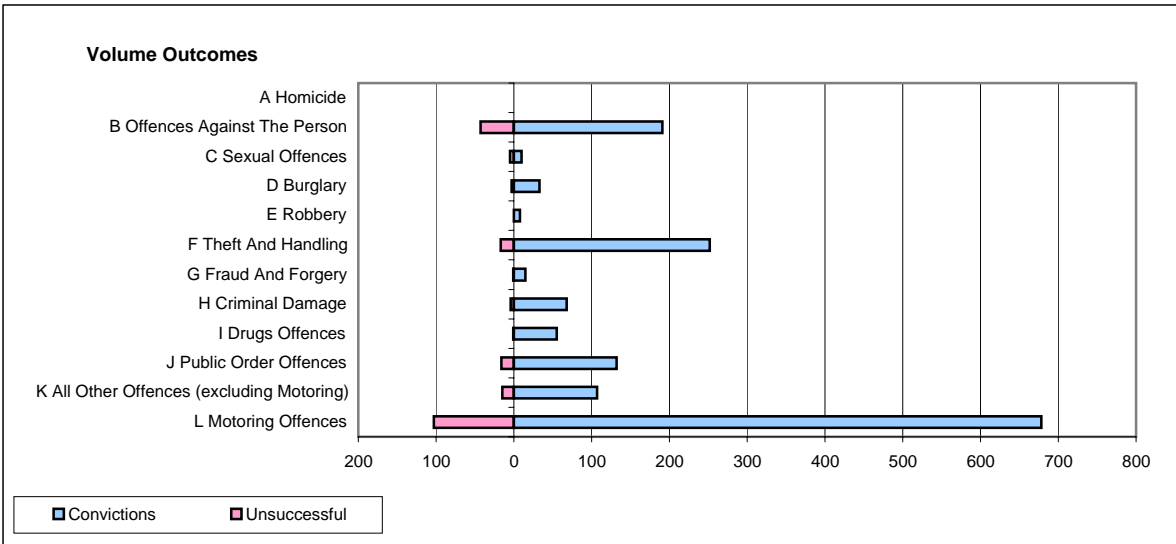
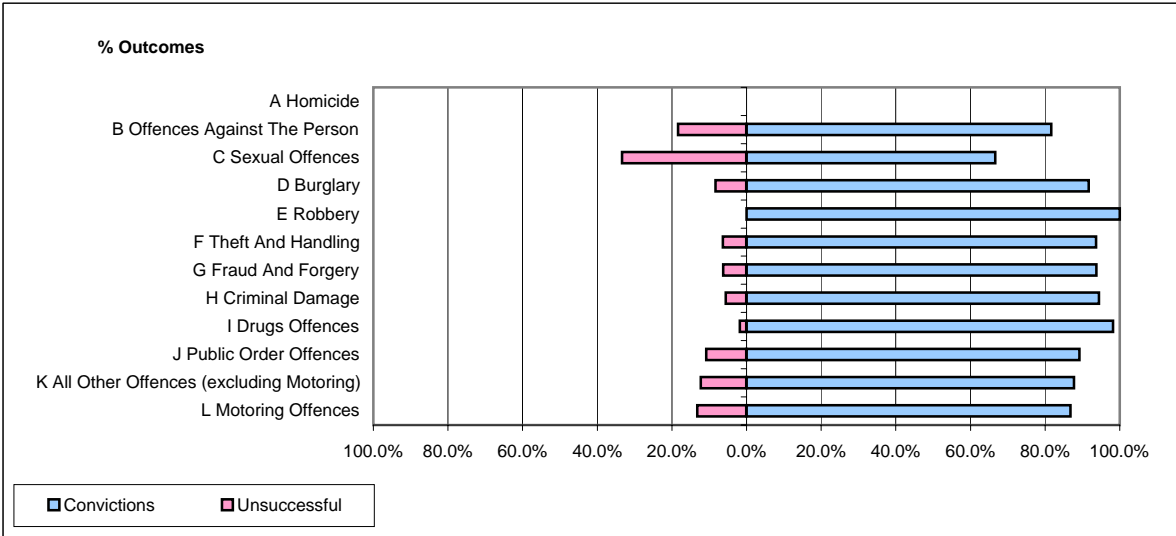


**CPS OUTCOMES BY PRINCIPAL OFFENCE CATEGORY**

**June 2008**

**P40-WestMercia**



	Convictions		Unsuccessful	
	Number of Defendants	%	Number of Defendants	%
<b>A Homicide</b>	<b>0</b>	<b>0</b>	<b>0</b>	<b>0</b>
<b>B Offences Against The Person</b>	<b>191</b>	<b>81.6%</b>	<b>43</b>	<b>18.4%</b>
<b>C Sexual Offences</b>	<b>10</b>	<b>66.7%</b>	<b>5</b>	<b>33.3%</b>
<b>D Burglary</b>	<b>33</b>	<b>91.7%</b>	<b>3</b>	<b>8.3%</b>
<b>E Robbery</b>	<b>8</b>	<b>100.0%</b>	<b>0</b>	<b>0.0%</b>
<b>F Theft And Handling</b>	<b>252</b>	<b>93.7%</b>	<b>17</b>	<b>6.3%</b>
<b>G Fraud And Forgery</b>	<b>15</b>	<b>93.8%</b>	<b>1</b>	<b>6.3%</b>
<b>H Criminal Damage</b>	<b>68</b>	<b>94.4%</b>	<b>4</b>	<b>5.6%</b>
<b>I Drugs Offences</b>	<b>55</b>	<b>98.2%</b>	<b>1</b>	<b>1.8%</b>
<b>J Public Order Offences</b>	<b>132</b>	<b>89.2%</b>	<b>16</b>	<b>10.8%</b>
<b>K All Other Offences (excluding Motoring)</b>	<b>107</b>	<b>87.7%</b>	<b>15</b>	<b>12.3%</b>
<b>L Motoring Offences</b>	<b>678</b>	<b>86.8%</b>	<b>103</b>	<b>13.2%</b>
<b>Admin Finalisations</b>	<b>0</b>	<b>0.0%</b>	<b>9</b>	<b>100.0%</b>
<b>TOTAL</b>	<b>1,549</b>	<b>87.7%</b>	<b>217</b>	<b>12.3%</b>