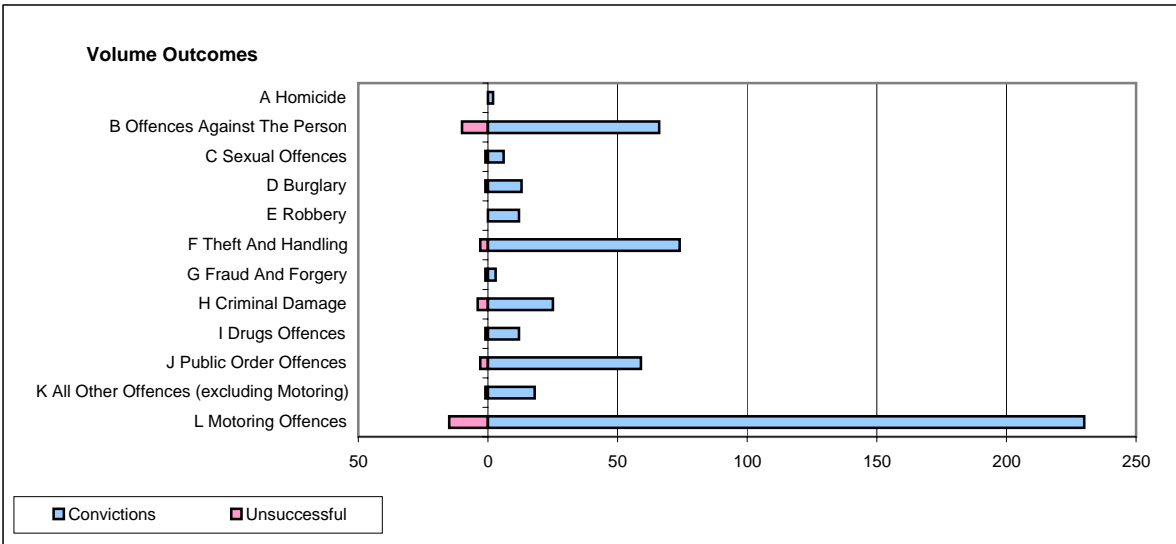
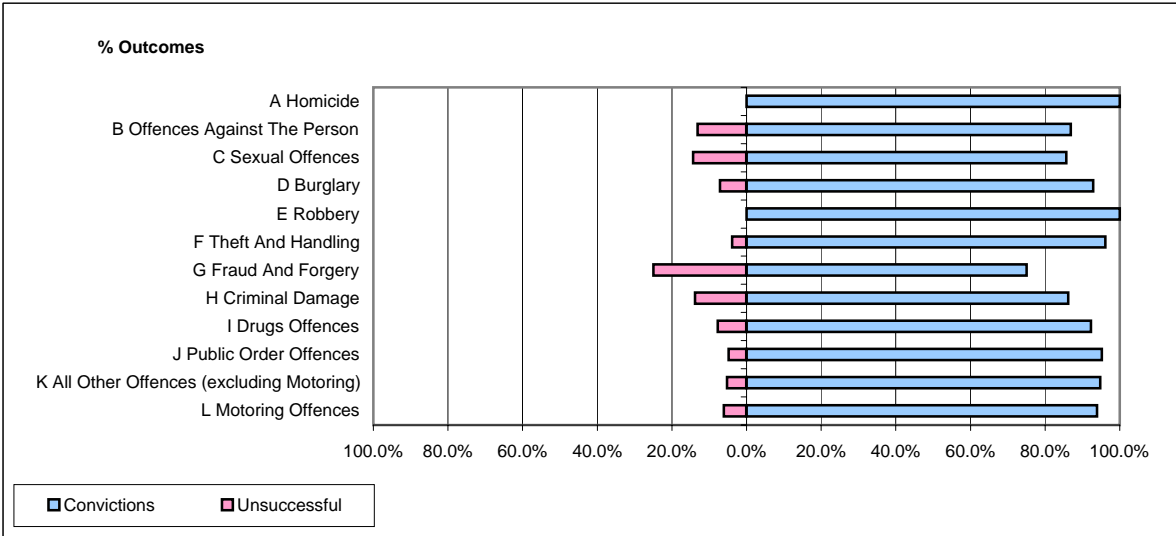


CPS OUTCOMES BY PRINCIPAL OFFENCE CATEGORY

June 2008

P39-Warwickshire



	Convictions		Unsuccessful	
	Number of Defendants	%	Number of Defendants	%
A Homicide	2	100.0%	0	0.0%
B Offences Against The Person	66	86.8%	10	13.2%
C Sexual Offences	6	85.7%	1	14.3%
D Burglary	13	92.9%	1	7.1%
E Robbery	12	100.0%	0	0.0%
F Theft And Handling	74	96.1%	3	3.9%
G Fraud And Forgery	3	75.0%	1	25.0%
H Criminal Damage	25	86.2%	4	13.8%
I Drugs Offences	12	92.3%	1	7.7%
J Public Order Offences	59	95.2%	3	4.8%
K All Other Offences (excluding Motoring)	18	94.7%	1	5.3%
L Motoring Offences	230	93.9%	15	6.1%
Admin Finalisations	0	0.0%	7	100.0%
TOTAL	520	91.7%	47	8.3%