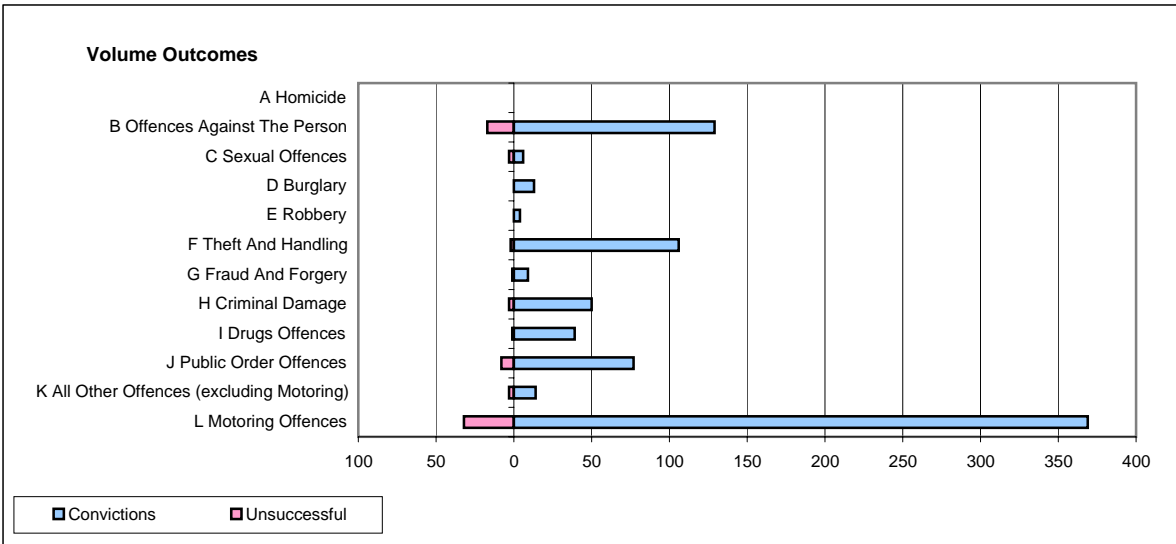
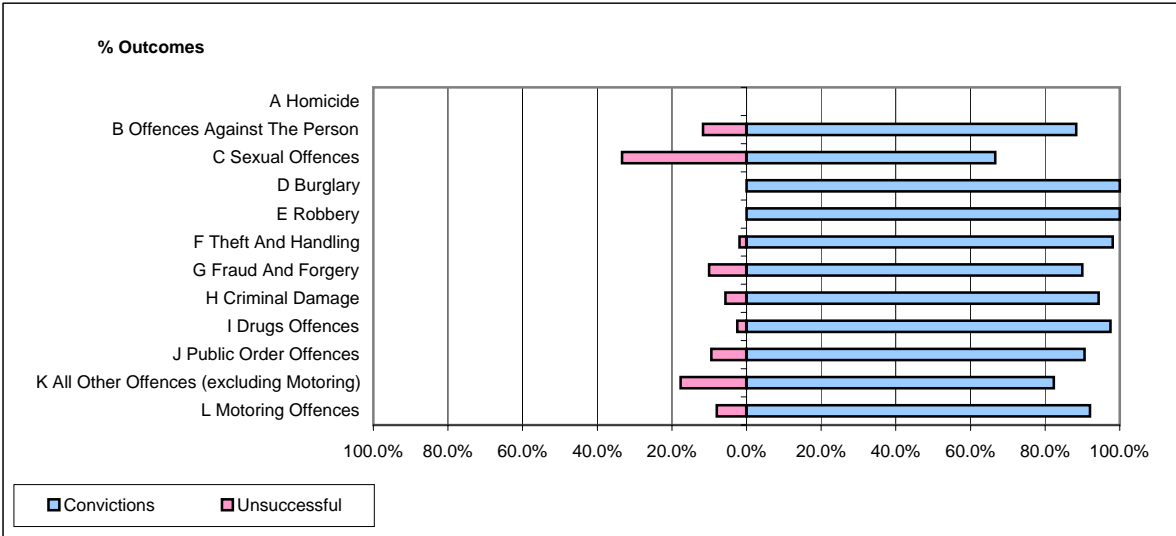


CPS OUTCOMES BY PRINCIPAL OFFENCE CATEGORY

June 2008

P35-Suffolk



	Convictions		Unsuccessful	
	Number of Defendants	%	Number of Defendants	%
A Homicide	0	0	0	0
B Offences Against The Person	129	88.4%	17	11.6%
C Sexual Offences	6	66.7%	3	33.3%
D Burglary	13	100.0%	0	0.0%
E Robbery	4	100.0%	0	0.0%
F Theft And Handling	106	98.1%	2	1.9%
G Fraud And Forgery	9	90.0%	1	10.0%
H Criminal Damage	50	94.3%	3	5.7%
I Drugs Offences	39	97.5%	1	2.5%
J Public Order Offences	77	90.6%	8	9.4%
K All Other Offences (excluding Motoring)	14	82.4%	3	17.6%
L Motoring Offences	369	92.0%	32	8.0%
Admin Finalisations	0	0.0%	9	100.0%
TOTAL	816	91.2%	79	8.8%