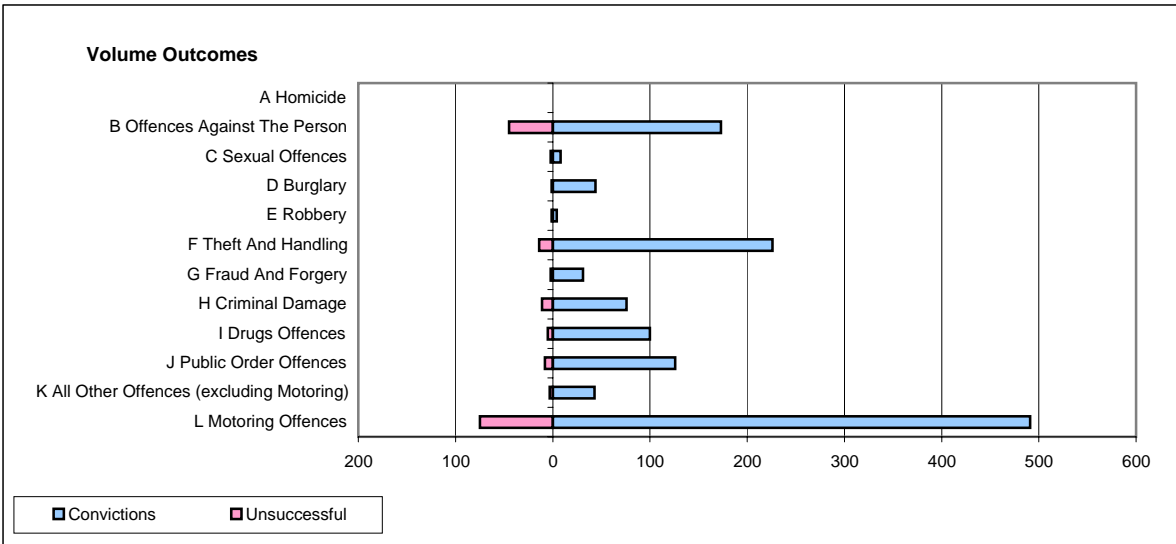
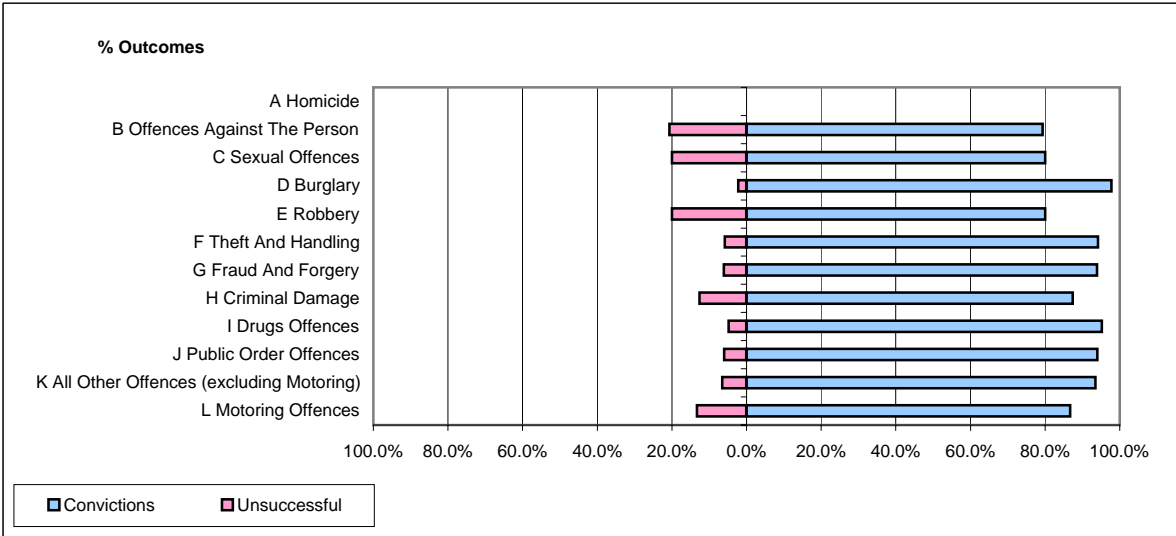


**CPS OUTCOMES BY PRINCIPAL OFFENCE CATEGORY**

**June 2008**

**P34-Staffordshire**



	Convictions		Unsuccessful	
	Number of Defendants	%	Number of Defendants	%
<b>A Homicide</b>	<b>0</b>	<b>0</b>	<b>0</b>	<b>0</b>
<b>B Offences Against The Person</b>	<b>173</b>	<b>79.4%</b>	<b>45</b>	<b>20.6%</b>
<b>C Sexual Offences</b>	<b>8</b>	<b>80.0%</b>	<b>2</b>	<b>20.0%</b>
<b>D Burglary</b>	<b>44</b>	<b>97.8%</b>	<b>1</b>	<b>2.2%</b>
<b>E Robbery</b>	<b>4</b>	<b>80.0%</b>	<b>1</b>	<b>20.0%</b>
<b>F Theft And Handling</b>	<b>226</b>	<b>94.2%</b>	<b>14</b>	<b>5.8%</b>
<b>G Fraud And Forgery</b>	<b>31</b>	<b>93.9%</b>	<b>2</b>	<b>6.1%</b>
<b>H Criminal Damage</b>	<b>76</b>	<b>87.4%</b>	<b>11</b>	<b>12.6%</b>
<b>I Drugs Offences</b>	<b>100</b>	<b>95.2%</b>	<b>5</b>	<b>4.8%</b>
<b>J Public Order Offences</b>	<b>126</b>	<b>94.0%</b>	<b>8</b>	<b>6.0%</b>
<b>K All Other Offences (excluding Motoring)</b>	<b>43</b>	<b>93.5%</b>	<b>3</b>	<b>6.5%</b>
<b>L Motoring Offences</b>	<b>491</b>	<b>86.7%</b>	<b>75</b>	<b>13.3%</b>
<b>Admin Finalisations</b>	<b>0</b>	<b>0.0%</b>	<b>16</b>	<b>100.0%</b>
<b>TOTAL</b>	<b>1,322</b>	<b>87.8%</b>	<b>183</b>	<b>12.2%</b>