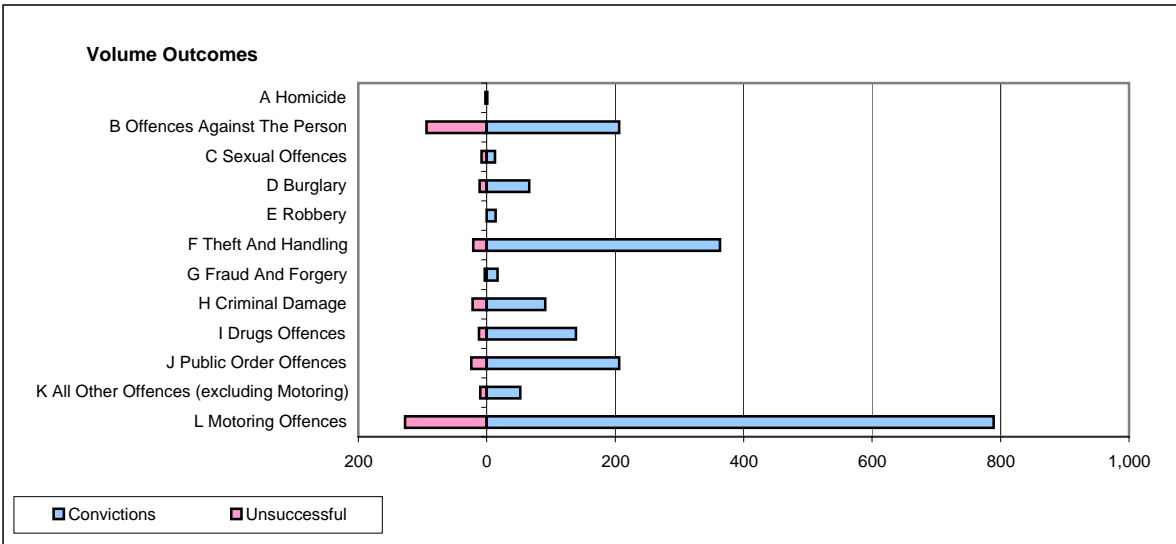
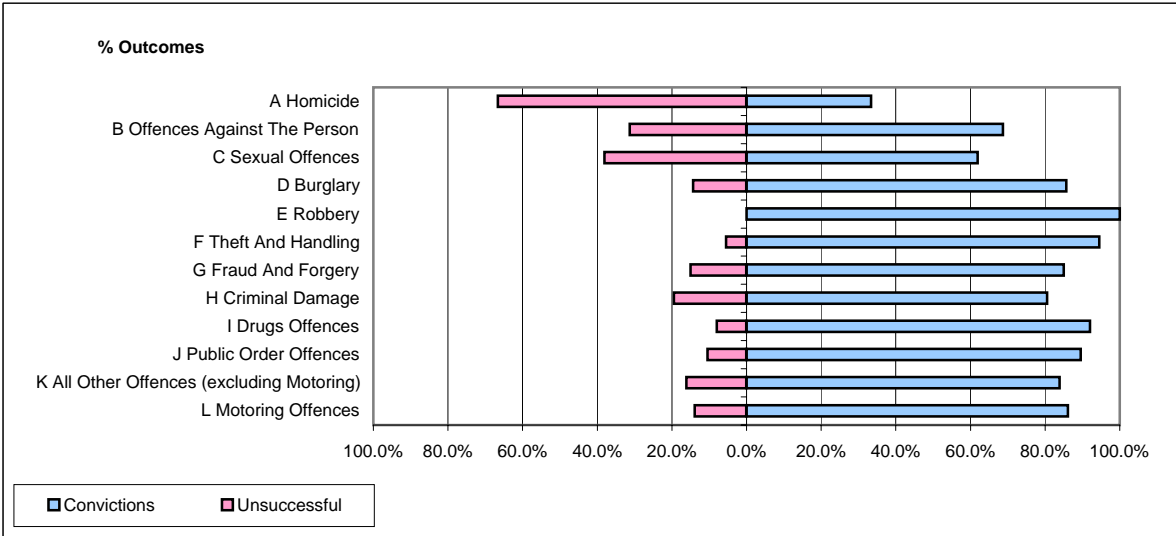


**CPS OUTCOMES BY PRINCIPAL OFFENCE CATEGORY**

**June 2008**

**P32-SouthWales**



	Convictions		Unsuccessful	
	Number of Defendants	%	Number of Defendants	%
<b>A Homicide</b>	<b>1</b>	<b>33.3%</b>	<b>2</b>	<b>66.7%</b>
<b>B Offences Against The Person</b>	<b>206</b>	<b>68.7%</b>	<b>94</b>	<b>31.3%</b>
<b>C Sexual Offences</b>	<b>13</b>	<b>61.9%</b>	<b>8</b>	<b>38.1%</b>
<b>D Burglary</b>	<b>66</b>	<b>85.7%</b>	<b>11</b>	<b>14.3%</b>
<b>E Robbery</b>	<b>14</b>	<b>100.0%</b>	<b>0</b>	<b>0.0%</b>
<b>F Theft And Handling</b>	<b>363</b>	<b>94.5%</b>	<b>21</b>	<b>5.5%</b>
<b>G Fraud And Forgery</b>	<b>17</b>	<b>85.0%</b>	<b>3</b>	<b>15.0%</b>
<b>H Criminal Damage</b>	<b>91</b>	<b>80.5%</b>	<b>22</b>	<b>19.5%</b>
<b>I Drugs Offences</b>	<b>139</b>	<b>92.1%</b>	<b>12</b>	<b>7.9%</b>
<b>J Public Order Offences</b>	<b>206</b>	<b>89.6%</b>	<b>24</b>	<b>10.4%</b>
<b>K All Other Offences (excluding Motoring)</b>	<b>52</b>	<b>83.9%</b>	<b>10</b>	<b>16.1%</b>
<b>L Motoring Offences</b>	<b>789</b>	<b>86.1%</b>	<b>127</b>	<b>13.9%</b>
<b>Admin Finalisations</b>	<b>0</b>	<b>0.0%</b>	<b>42</b>	<b>100.0%</b>
<b>TOTAL</b>	<b>1,957</b>	<b>83.9%</b>	<b>376</b>	<b>16.1%</b>