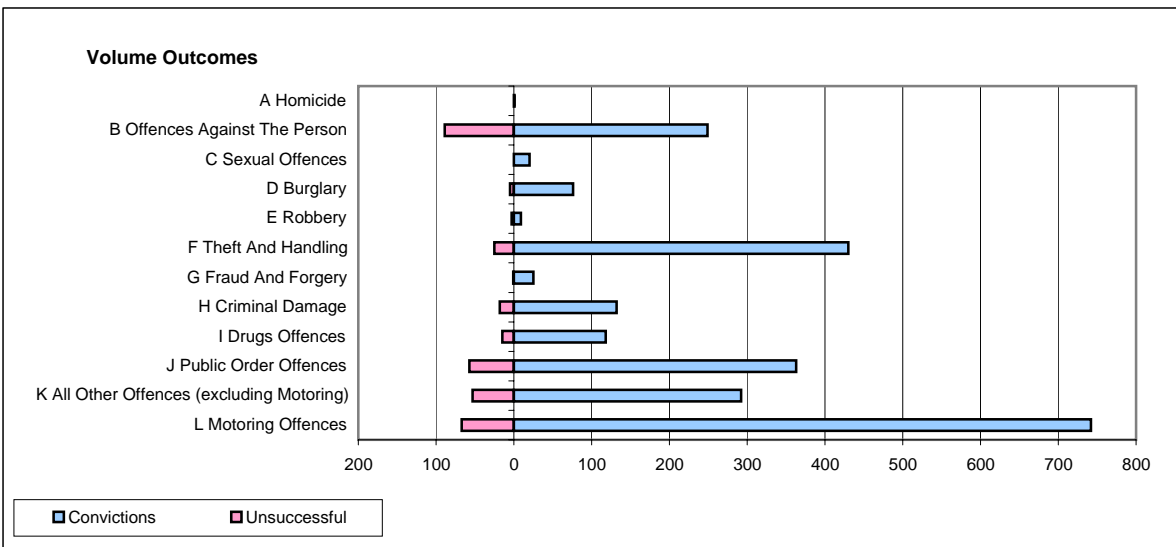
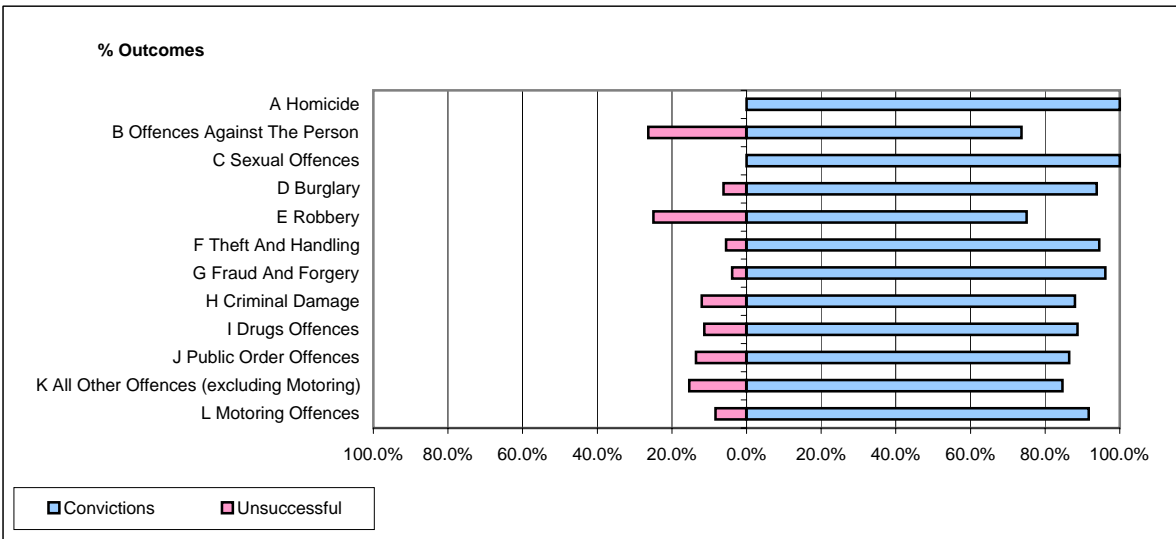


CPS OUTCOMES BY PRINCIPAL OFFENCE CATEGORY

June 2008

P28-Northumbria



	Convictions		Unsuccessful	
	Number of Defendants	%	Number of Defendants	%
A Homicide	1	100.0%	0	0.0%
B Offences Against The Person	249	73.7%	89	26.3%
C Sexual Offences	20	100.0%	0	0.0%
D Burglary	76	93.8%	5	6.2%
E Robbery	9	75.0%	3	25.0%
F Theft And Handling	430	94.5%	25	5.5%
G Fraud And Forgery	25	96.2%	1	3.8%
H Criminal Damage	132	88.0%	18	12.0%
I Drugs Offences	118	88.7%	15	11.3%
J Public Order Offences	363	86.4%	57	13.6%
K All Other Offences (excluding Motoring)	292	84.6%	53	15.4%
L Motoring Offences	742	91.7%	67	8.3%
Admin Finalisations	0	0.0%	14	100.0%
TOTAL	2,457	87.6%	347	12.4%