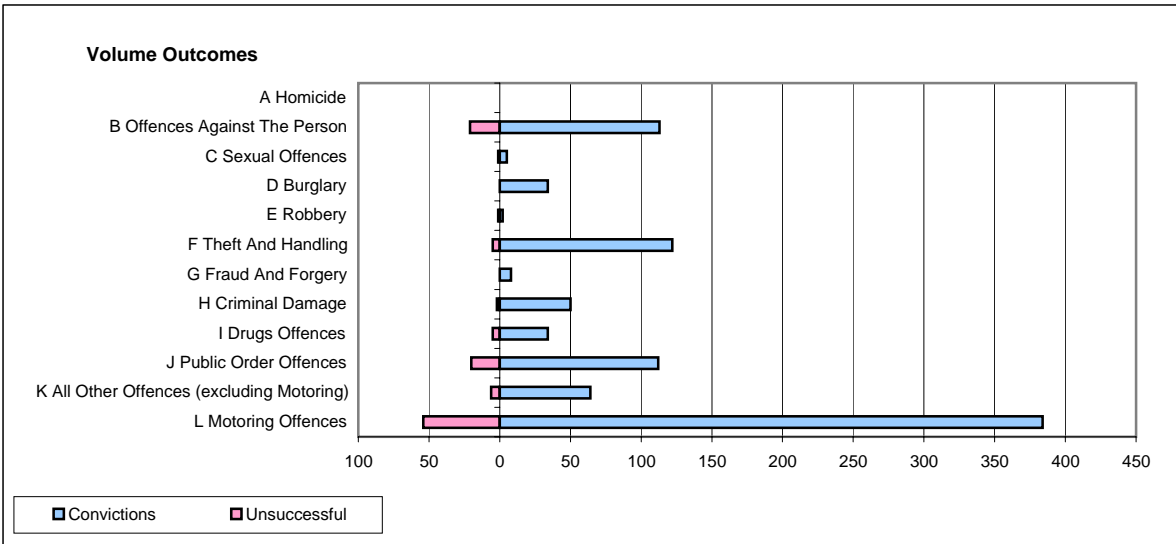
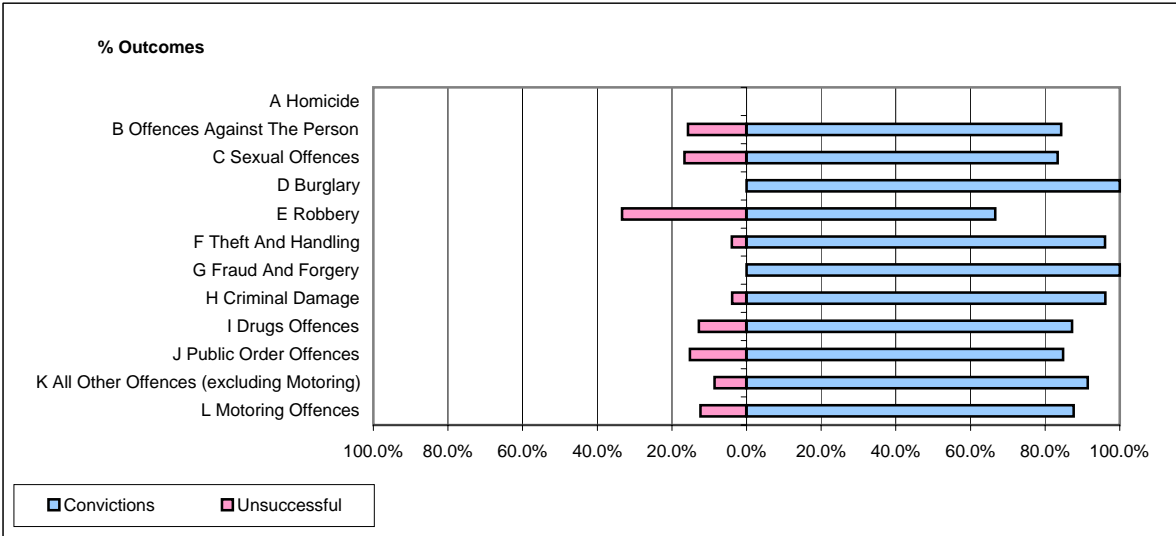


CPS OUTCOMES BY PRINCIPAL OFFENCE CATEGORY

June 2008

P29-NorthWales



	Convictions		Unsuccessful	
	Number of Defendants	%	Number of Defendants	%
A Homicide	0	0	0	0
B Offences Against The Person	113	84.3%	21	15.7%
C Sexual Offences	5	83.3%	1	16.7%
D Burglary	34	100.0%	0	0.0%
E Robbery	2	66.7%	1	33.3%
F Theft And Handling	122	96.1%	5	3.9%
G Fraud And Forgery	8	100.0%	0	0.0%
H Criminal Damage	50	96.2%	2	3.8%
I Drugs Offences	34	87.2%	5	12.8%
J Public Order Offences	112	84.8%	20	15.2%
K All Other Offences (excluding Motoring)	64	91.4%	6	8.6%
L Motoring Offences	384	87.7%	54	12.3%
Admin Finalisations	0	0.0%	2	100.0%
TOTAL	928	88.8%	117	11.2%