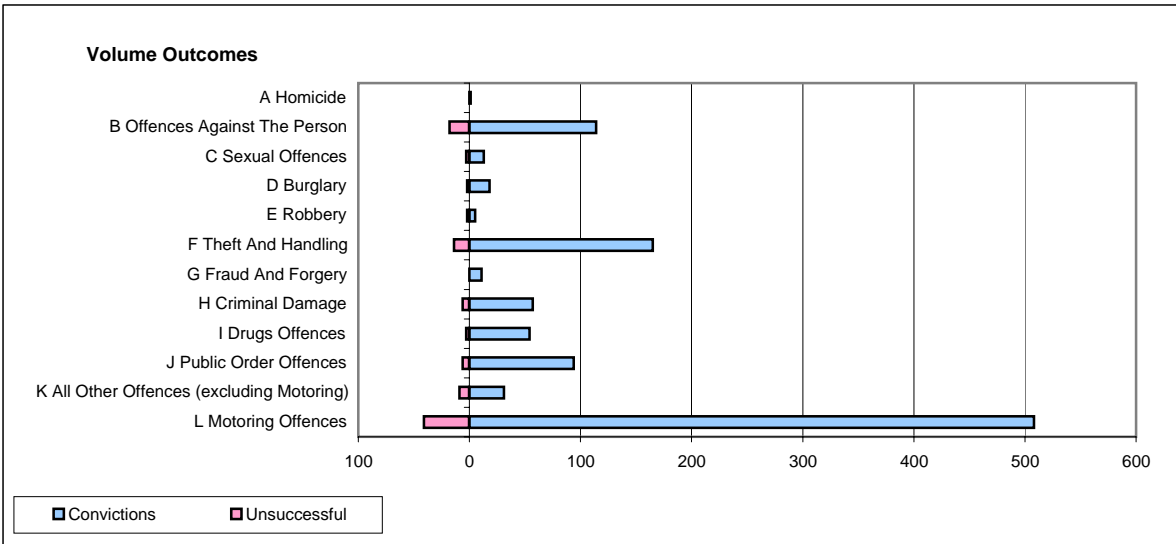
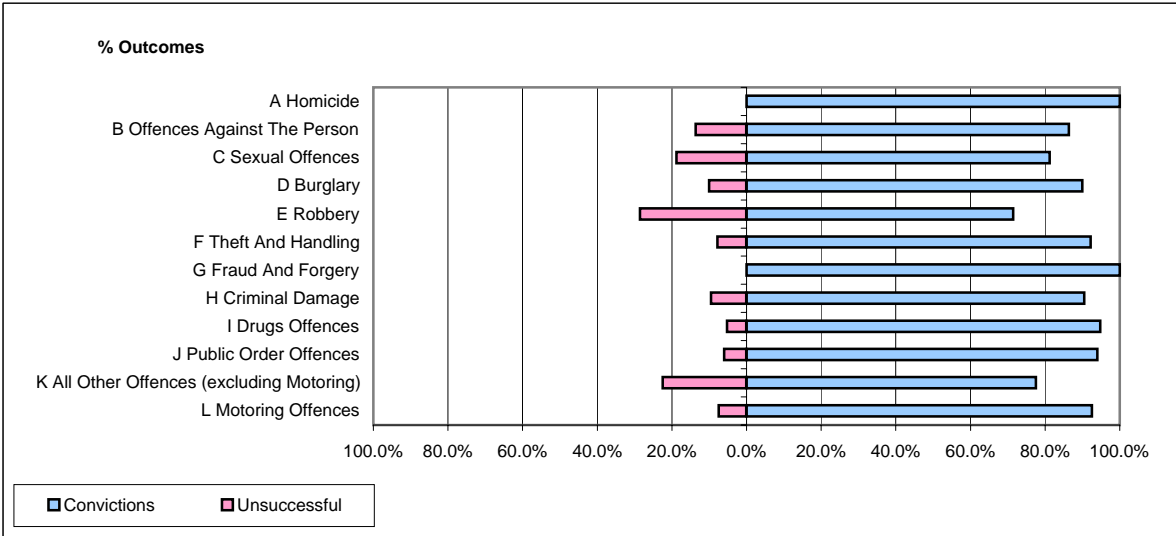


CPS OUTCOMES BY PRINCIPAL OFFENCE CATEGORY

June 2008

P26-Norfolk



	Convictions		Unsuccessful	
	Number of Defendants	%	Number of Defendants	%
A Homicide	1	100.0%	0	0.0%
B Offences Against The Person	114	86.4%	18	13.6%
C Sexual Offences	13	81.3%	3	18.8%
D Burglary	18	90.0%	2	10.0%
E Robbery	5	71.4%	2	28.6%
F Theft And Handling	165	92.2%	14	7.8%
G Fraud And Forgery	11	100.0%	0	0.0%
H Criminal Damage	57	90.5%	6	9.5%
I Drugs Offences	54	94.7%	3	5.3%
J Public Order Offences	94	94.0%	6	6.0%
K All Other Offences (excluding Motoring)	31	77.5%	9	22.5%
L Motoring Offences	508	92.5%	41	7.5%
Admin Finalisations	0	0.0%	21	100.0%
TOTAL	1,071	89.5%	125	10.5%