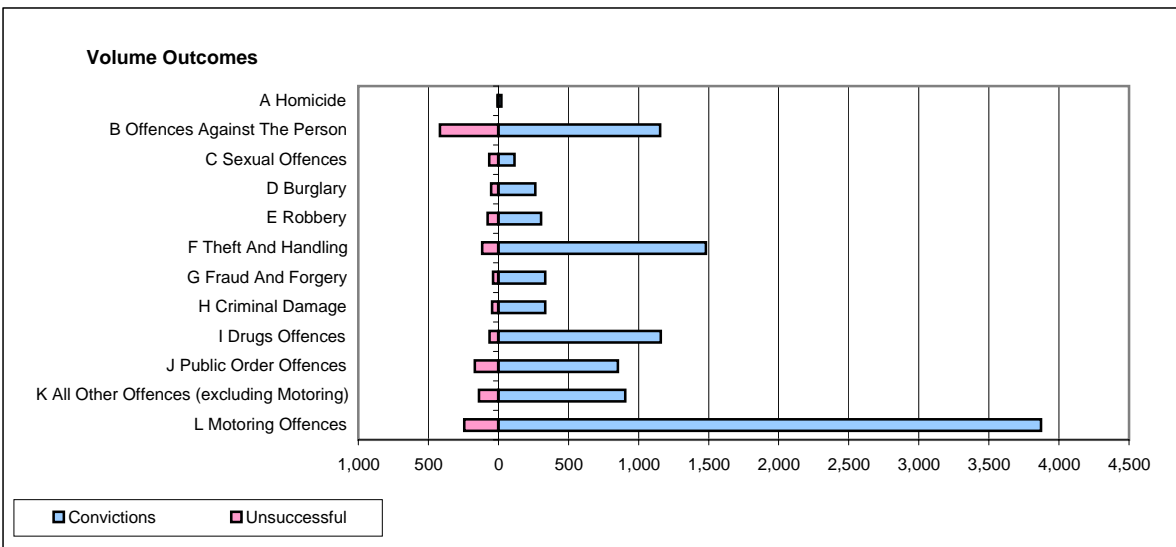
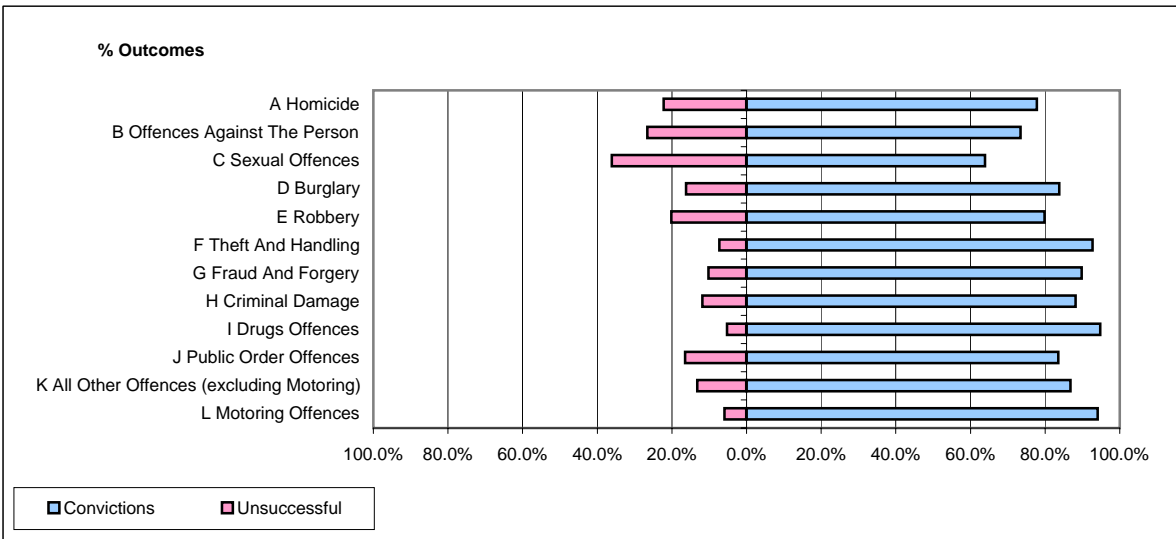


**CPS OUTCOMES BY PRINCIPAL OFFENCE CATEGORY**

**June 2008**

**P25-Metropolitan&City**



	Convictions		Unsuccessful	
	Number of Defendants	%	Number of Defendants	%
<b>A Homicide</b>	21	77.8%	6	22.2%
<b>B Offences Against The Person</b>	1,154	73.4%	418	26.6%
<b>C Sexual Offences</b>	115	63.9%	65	36.1%
<b>D Burglary</b>	263	83.8%	51	16.2%
<b>E Robbery</b>	305	79.8%	77	20.2%
<b>F Theft And Handling</b>	1,480	92.7%	117	7.3%
<b>G Fraud And Forgery</b>	335	89.8%	38	10.2%
<b>H Criminal Damage</b>	335	88.2%	45	11.8%
<b>I Drugs Offences</b>	1,158	94.8%	64	5.2%
<b>J Public Order Offences</b>	852	83.5%	168	16.5%
<b>K All Other Offences (excluding Motoring)</b>	904	86.8%	138	13.2%
<b>L Motoring Offences</b>	3,873	94.1%	245	5.9%
<b>Admin Finalisations</b>	0	0.0%	313	100.0%
<b>TOTAL</b>	<b>10,795</b>	<b>86.1%</b>	<b>1,745</b>	<b>13.9%</b>