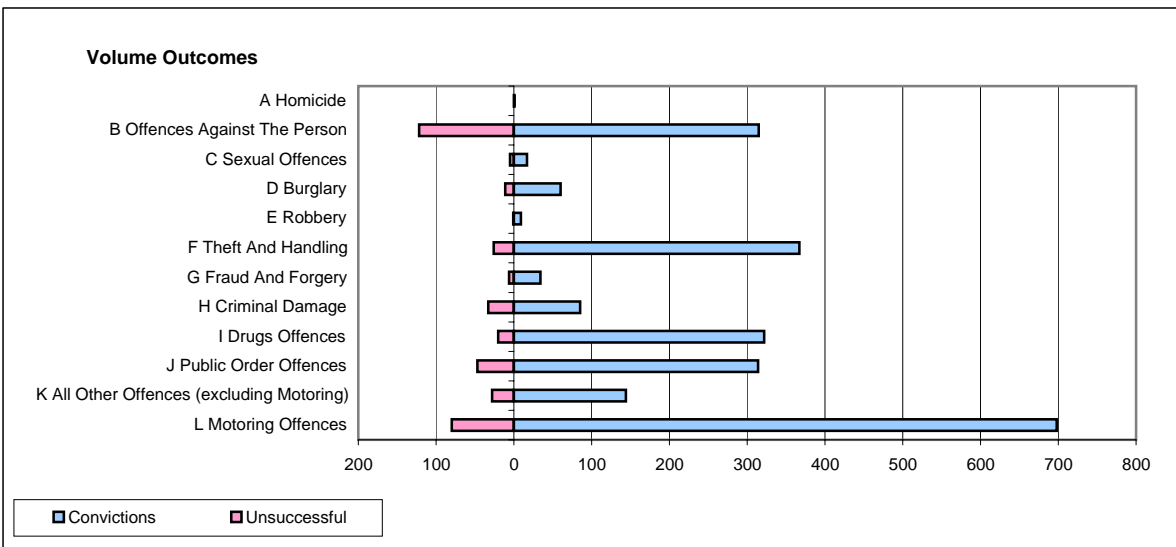
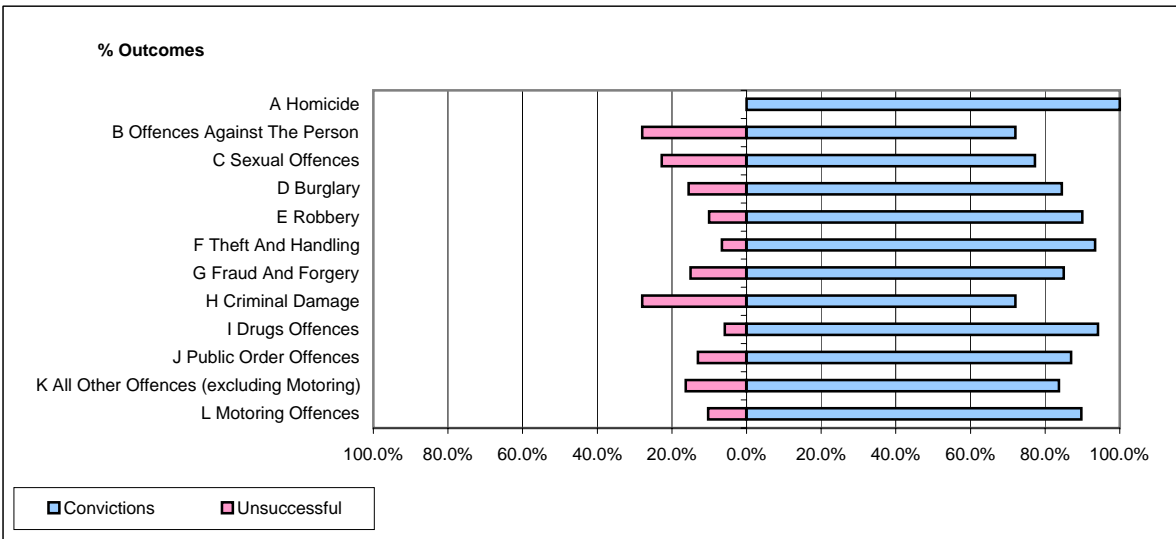


CPS OUTCOMES BY PRINCIPAL OFFENCE CATEGORY

June 2008

P24-Merseyside



	Convictions		Unsuccessful	
	Number of Defendants	%	Number of Defendants	%
A Homicide	1	100.0%	0	0.0%
B Offences Against The Person	315	72.1%	122	27.9%
C Sexual Offences	17	77.3%	5	22.7%
D Burglary	60	84.5%	11	15.5%
E Robbery	9	90.0%	1	10.0%
F Theft And Handling	367	93.4%	26	6.6%
G Fraud And Forgery	34	85.0%	6	15.0%
H Criminal Damage	85	72.0%	33	28.0%
I Drugs Offences	322	94.2%	20	5.8%
J Public Order Offences	314	87.0%	47	13.0%
K All Other Offences (excluding Motoring)	144	83.7%	28	16.3%
L Motoring Offences	698	89.7%	80	10.3%
Admin Finalisations	0	0.0%	33	100.0%
TOTAL	2,366	85.2%	412	14.8%