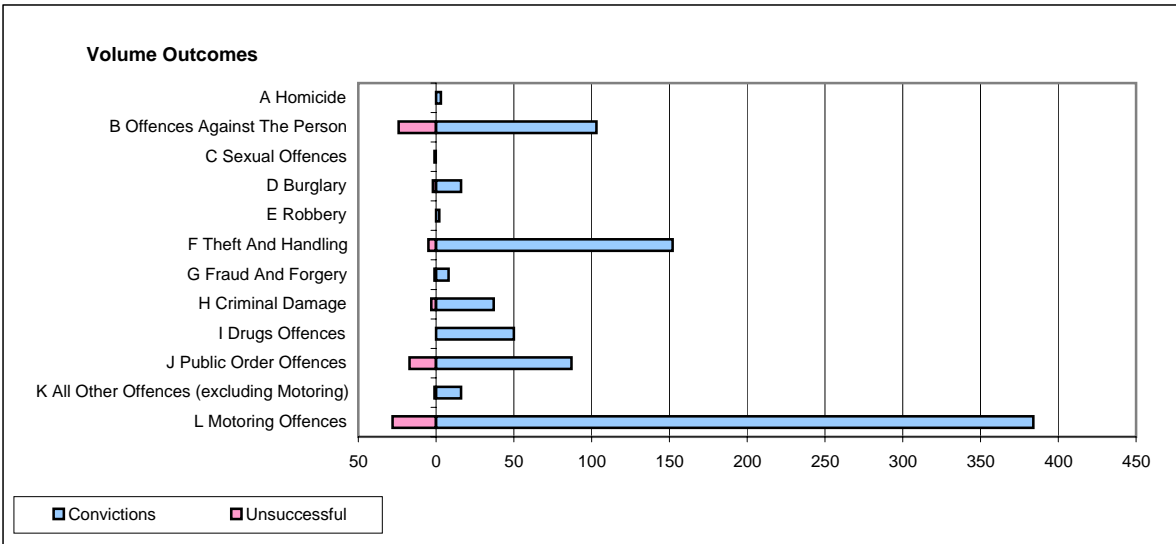
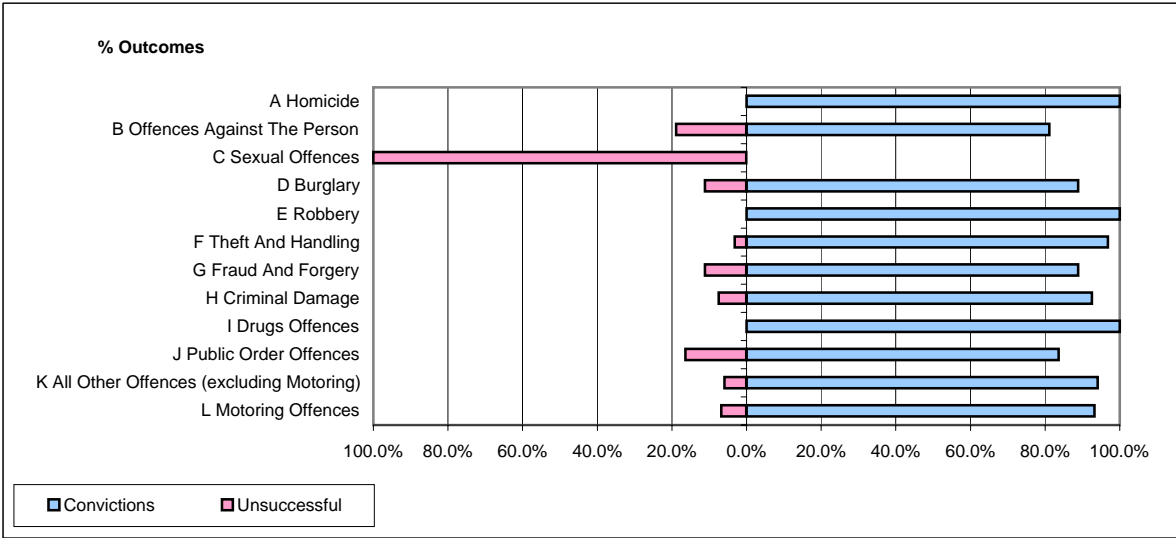


CPS OUTCOMES BY PRINCIPAL OFFENCE CATEGORY

June 2008

P23-Lincolnshire



	Convictions		Unsuccessful	
	Number of Defendants	%	Number of Defendants	%
A Homicide	3	100.0%	0	0.0%
B Offences Against The Person	103	81.1%	24	18.9%
C Sexual Offences	0	0.0%	1	100.0%
D Burglary	16	88.9%	2	11.1%
E Robbery	2	100.0%	0	0.0%
F Theft And Handling	152	96.8%	5	3.2%
G Fraud And Forgery	8	88.9%	1	11.1%
H Criminal Damage	37	92.5%	3	7.5%
I Drugs Offences	50	100.0%	0	0.0%
J Public Order Offences	87	83.7%	17	16.3%
K All Other Offences (excluding Motoring)	16	94.1%	1	5.9%
L Motoring Offences	384	93.2%	28	6.8%
Admin Finalisations	0	0.0%	8	100.0%
TOTAL	858	90.5%	90	9.5%