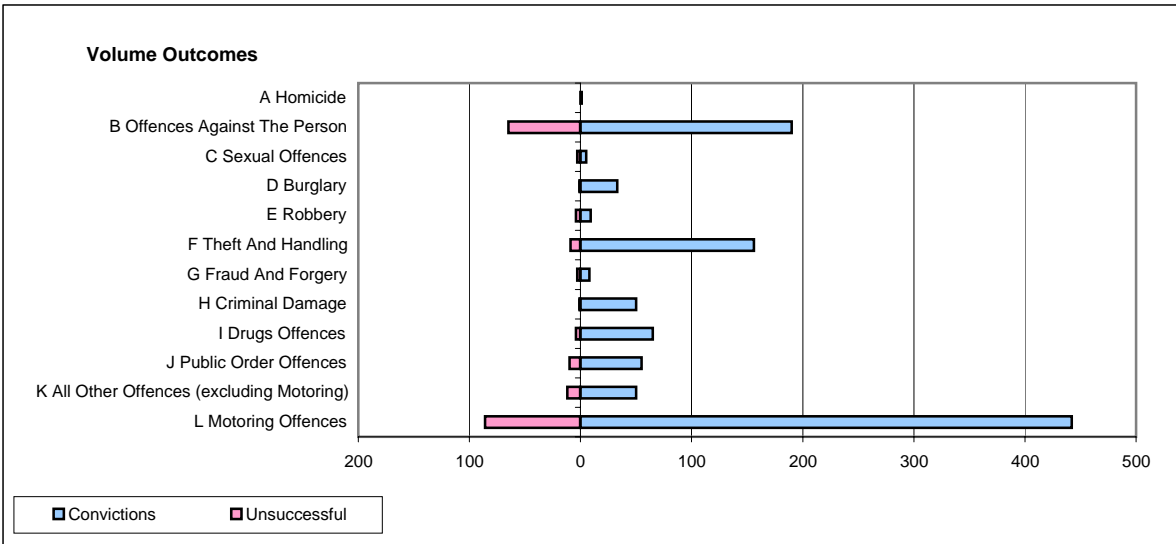
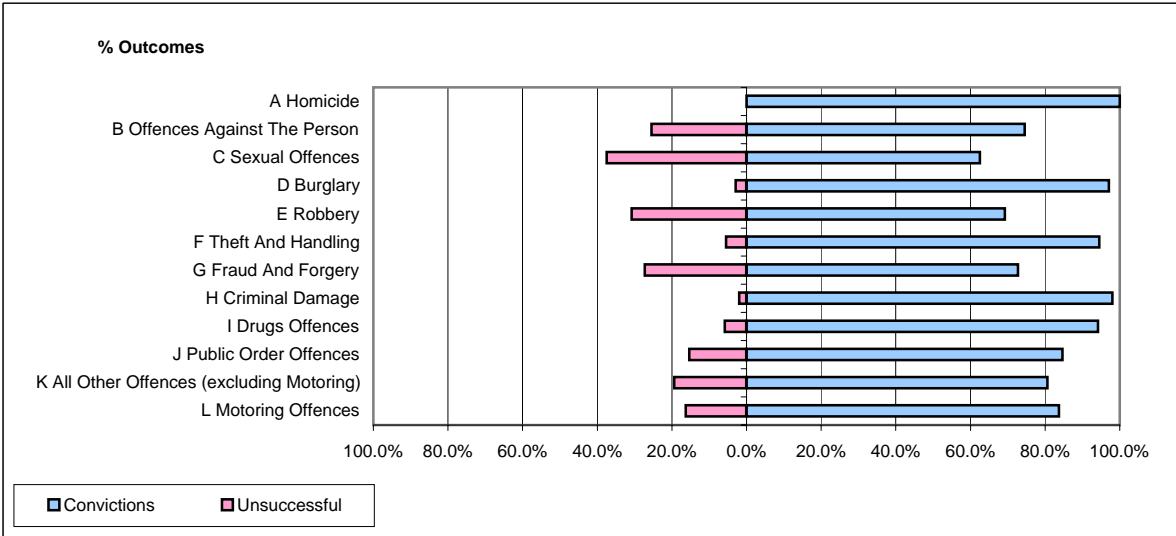


CPS OUTCOMES BY PRINCIPAL OFFENCE CATEGORY

June 2008

P22-Leicestershire



	Convictions		Unsuccessful	
	Number of Defendants	%	Number of Defendants	%
A Homicide	1	100.0%	0	0.0%
B Offences Against The Person	190	74.5%	65	25.5%
C Sexual Offences	5	62.5%	3	37.5%
D Burglary	33	97.1%	1	2.9%
E Robbery	9	69.2%	4	30.8%
F Theft And Handling	156	94.5%	9	5.5%
G Fraud And Forgery	8	72.7%	3	27.3%
H Criminal Damage	50	98.0%	1	2.0%
I Drugs Offences	65	94.2%	4	5.8%
J Public Order Offences	55	84.6%	10	15.4%
K All Other Offences (excluding Motoring)	50	80.6%	12	19.4%
L Motoring Offences	442	83.7%	86	16.3%
Admin Finalisations	0	0.0%	16	100.0%
TOTAL	1,064	83.3%	214	16.7%