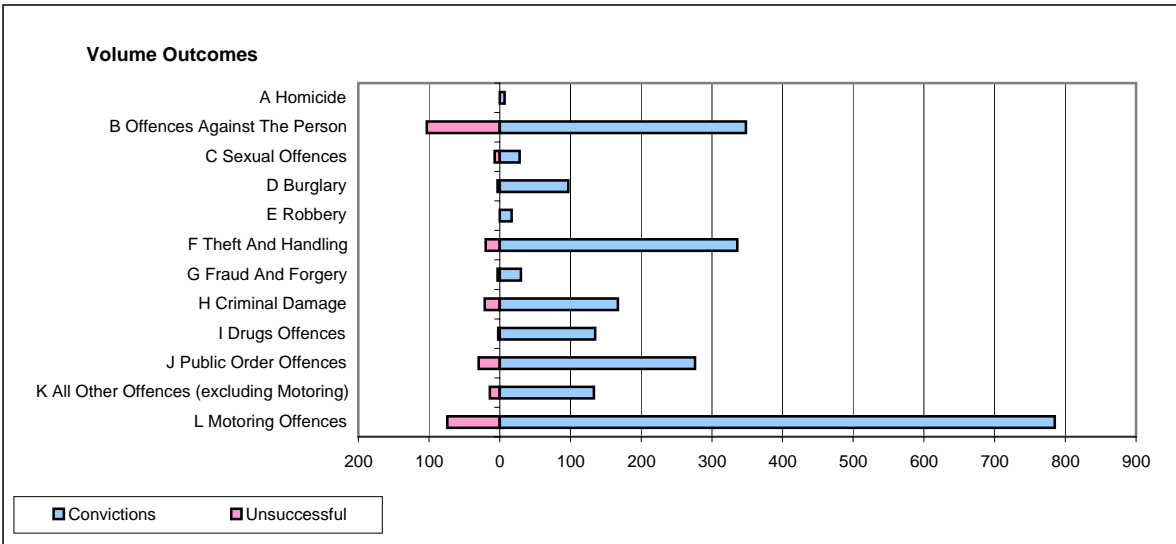
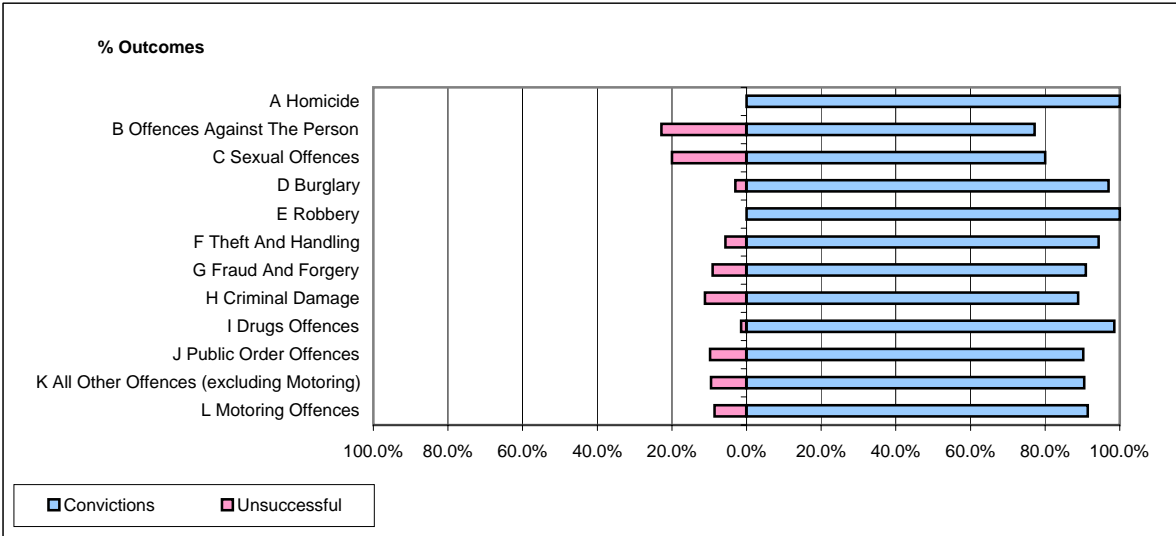


CPS OUTCOMES BY PRINCIPAL OFFENCE CATEGORY

June 2008

P21-Lancashire



	Convictions		Unsuccessful	
	Number of Defendants	%	Number of Defendants	%
A Homicide	7	100.0%	0	0.0%
B Offences Against The Person	348	77.2%	103	22.8%
C Sexual Offences	28	80.0%	7	20.0%
D Burglary	97	97.0%	3	3.0%
E Robbery	17	100.0%	0	0.0%
F Theft And Handling	336	94.4%	20	5.6%
G Fraud And Forgery	30	90.9%	3	9.1%
H Criminal Damage	167	88.8%	21	11.2%
I Drugs Offences	135	98.5%	2	1.5%
J Public Order Offences	276	90.2%	30	9.8%
K All Other Offences (excluding Motoring)	133	90.5%	14	9.5%
L Motoring Offences	785	91.4%	74	8.6%
Admin Finalisations	0	0.0%	20	100.0%
TOTAL	2,359	88.8%	297	11.2%