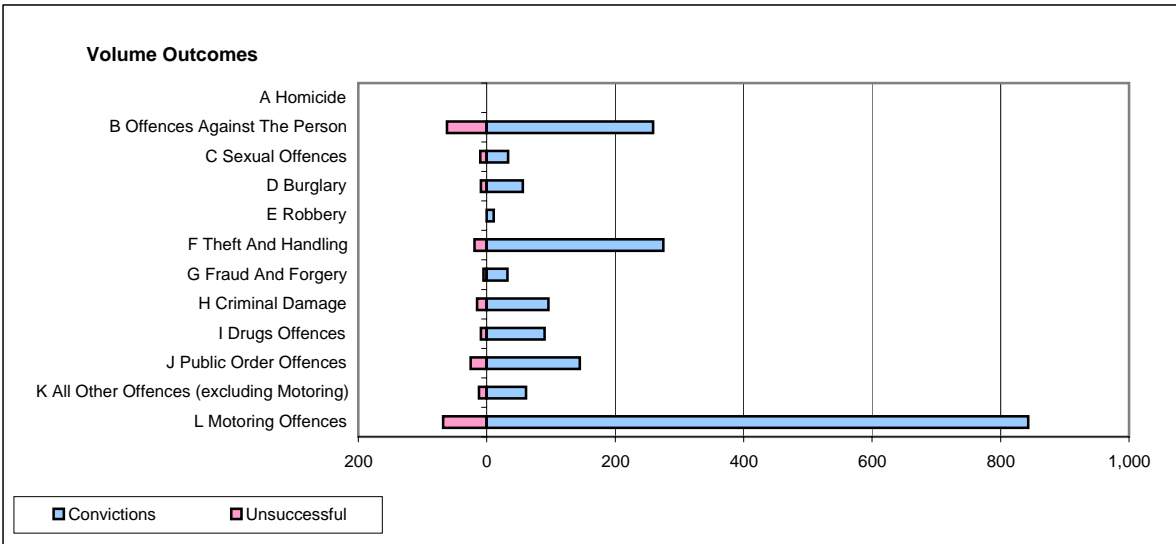
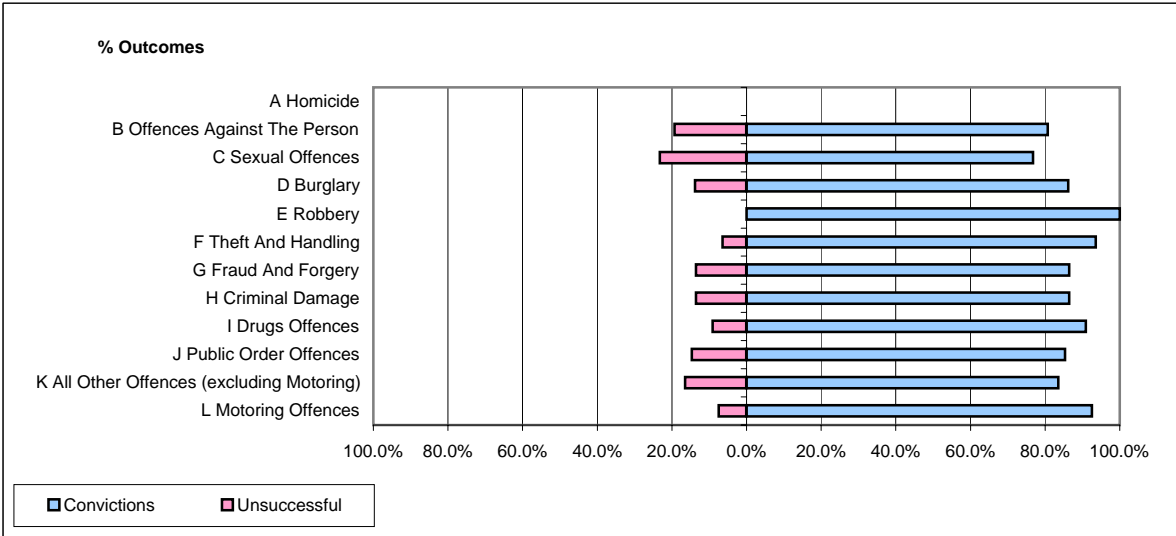


CPS OUTCOMES BY PRINCIPAL OFFENCE CATEGORY

June 2008

P20-Kent



	Convictions		Unsuccessful	
	Number of Defendants	%	Number of Defendants	%
A Homicide	0	0	0	0
B Offences Against The Person	259	80.7%	62	19.3%
C Sexual Offences	33	76.7%	10	23.3%
D Burglary	56	86.2%	9	13.8%
E Robbery	11	100.0%	0	0.0%
F Theft And Handling	275	93.5%	19	6.5%
G Fraud And Forgery	32	86.5%	5	13.5%
H Criminal Damage	96	86.5%	15	13.5%
I Drugs Offences	90	90.9%	9	9.1%
J Public Order Offences	145	85.3%	25	14.7%
K All Other Offences (excluding Motoring)	61	83.6%	12	16.4%
L Motoring Offences	843	92.5%	68	7.5%
Admin Finalisations	0	0.0%	21	100.0%
TOTAL	1,901	88.2%	255	11.8%