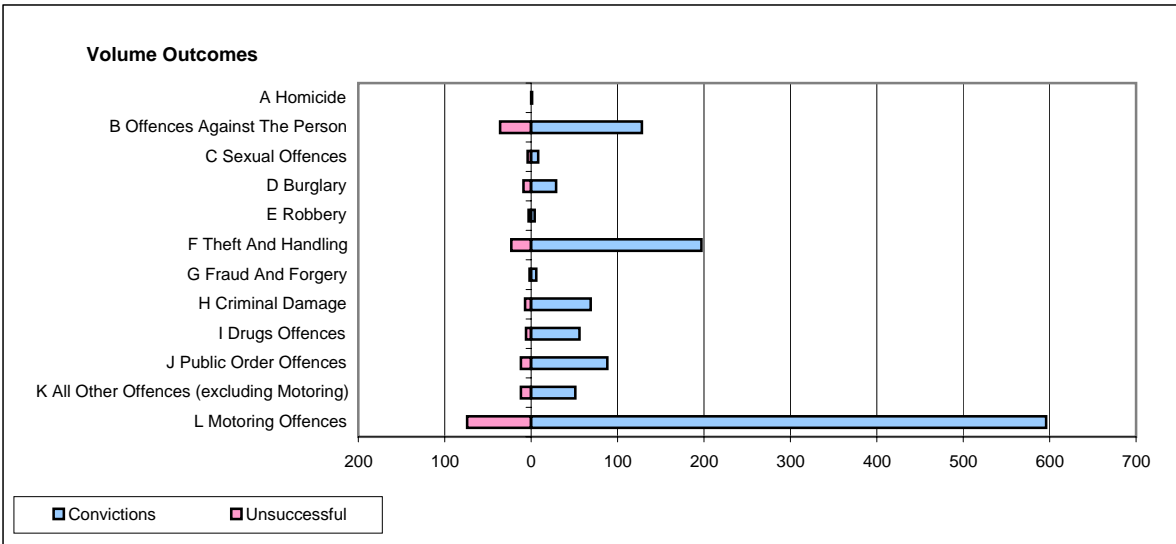
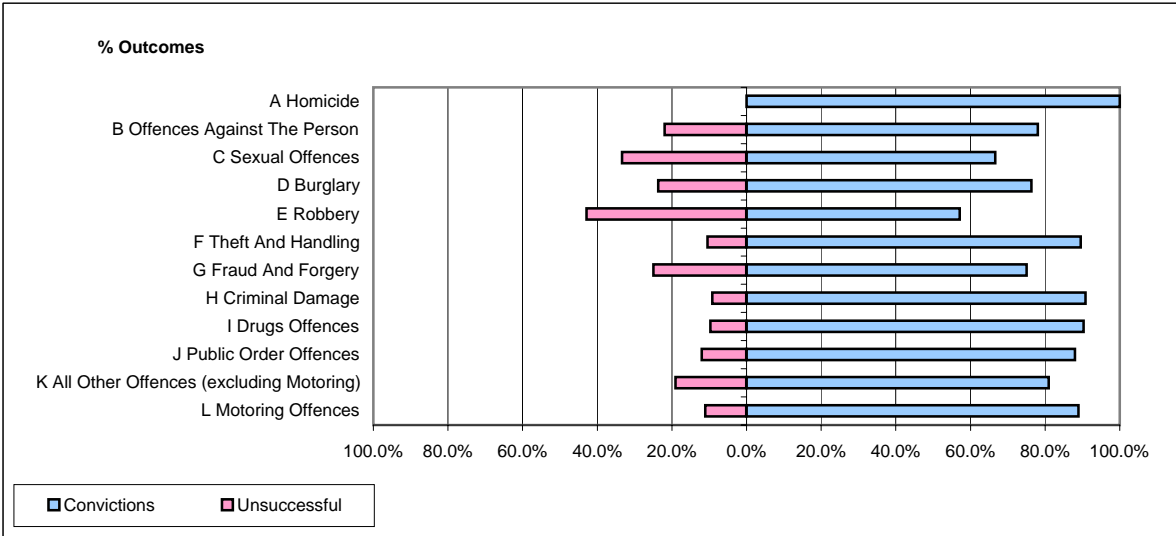


CPS OUTCOMES BY PRINCIPAL OFFENCE CATEGORY

June 2008

P18-Hertfordshire



	Convictions		Unsuccessful	
	Number of Defendants	%	Number of Defendants	%
A Homicide	1	100.0%	0	0.0%
B Offences Against The Person	128	78.0%	36	22.0%
C Sexual Offences	8	66.7%	4	33.3%
D Burglary	29	76.3%	9	23.7%
E Robbery	4	57.1%	3	42.9%
F Theft And Handling	197	89.5%	23	10.5%
G Fraud And Forgery	6	75.0%	2	25.0%
H Criminal Damage	69	90.8%	7	9.2%
I Drugs Offences	56	90.3%	6	9.7%
J Public Order Offences	88	88.0%	12	12.0%
K All Other Offences (excluding Motoring)	51	81.0%	12	19.0%
L Motoring Offences	596	89.0%	74	11.0%
Admin Finalisations	0	0.0%	39	100.0%
TOTAL	1,233	84.5%	227	15.5%