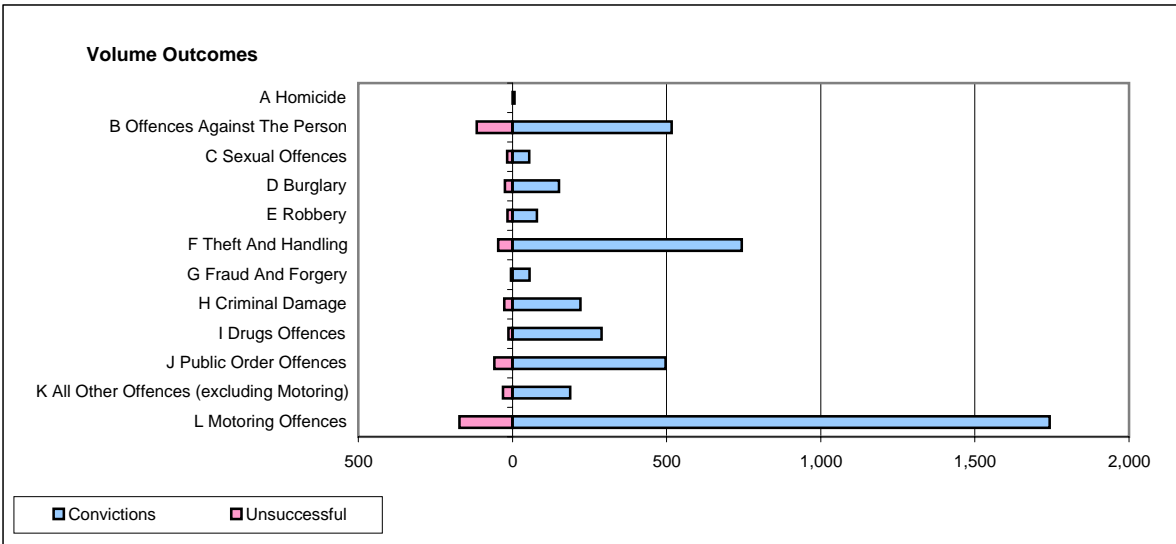
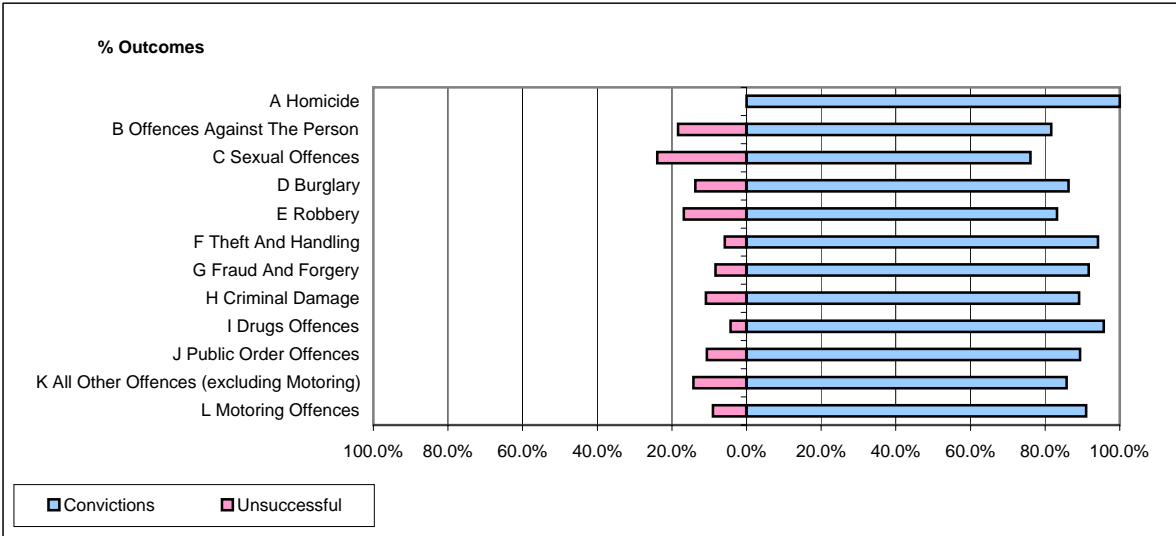


CPS OUTCOMES BY PRINCIPAL OFFENCE CATEGORY

June 2008

P15-GreaterManchester



	Convictions		Unsuccessful	
	Number of Defendants	%	Number of Defendants	%
A Homicide	7	100.0%	0	0.0%
B Offences Against The Person	516	81.6%	116	18.4%
C Sexual Offences	54	76.1%	17	23.9%
D Burglary	151	86.3%	24	13.7%
E Robbery	79	83.2%	16	16.8%
F Theft And Handling	744	94.2%	46	5.8%
G Fraud And Forgery	55	91.7%	5	8.3%
H Criminal Damage	221	89.1%	27	10.9%
I Drugs Offences	289	95.7%	13	4.3%
J Public Order Offences	497	89.4%	59	10.6%
K All Other Offences (excluding Motoring)	187	85.8%	31	14.2%
L Motoring Offences	1,743	91.0%	172	9.0%
Admin Finalisations	0	0.0%	59	100.0%
TOTAL	4,543	88.6%	585	11.4%