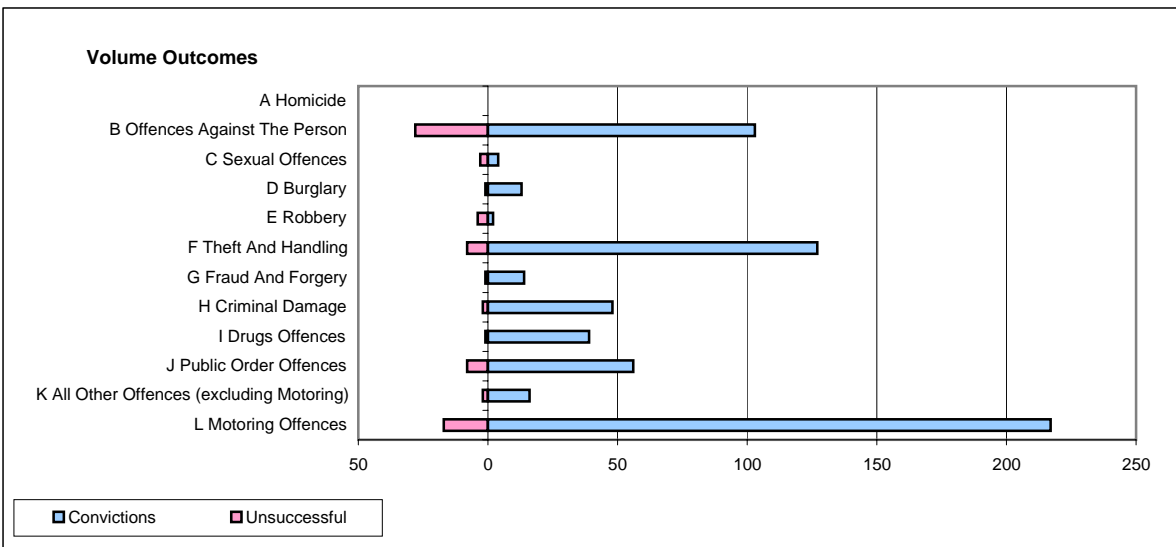
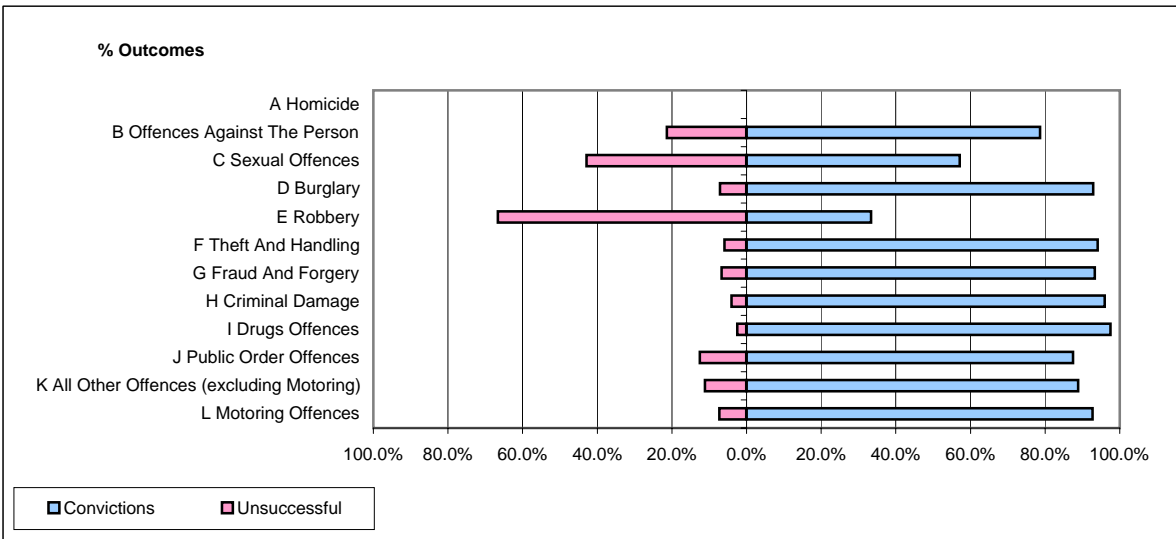


CPS OUTCOMES BY PRINCIPAL OFFENCE CATEGORY

June 2008

P14-Gloucestershire



	Convictions		Unsuccessful	
	Number of Defendants	%	Number of Defendants	%
A Homicide	0	0	0	0
B Offences Against The Person	103	78.6%	28	21.4%
C Sexual Offences	4	57.1%	3	42.9%
D Burglary	13	92.9%	1	7.1%
E Robbery	2	33.3%	4	66.7%
F Theft And Handling	127	94.1%	8	5.9%
G Fraud And Forgery	14	93.3%	1	6.7%
H Criminal Damage	48	96.0%	2	4.0%
I Drugs Offences	39	97.5%	1	2.5%
J Public Order Offences	56	87.5%	8	12.5%
K All Other Offences (excluding Motoring)	16	88.9%	2	11.1%
L Motoring Offences	217	92.7%	17	7.3%
Admin Finalisations	0	0.0%	5	100.0%
TOTAL	639	88.9%	80	11.1%