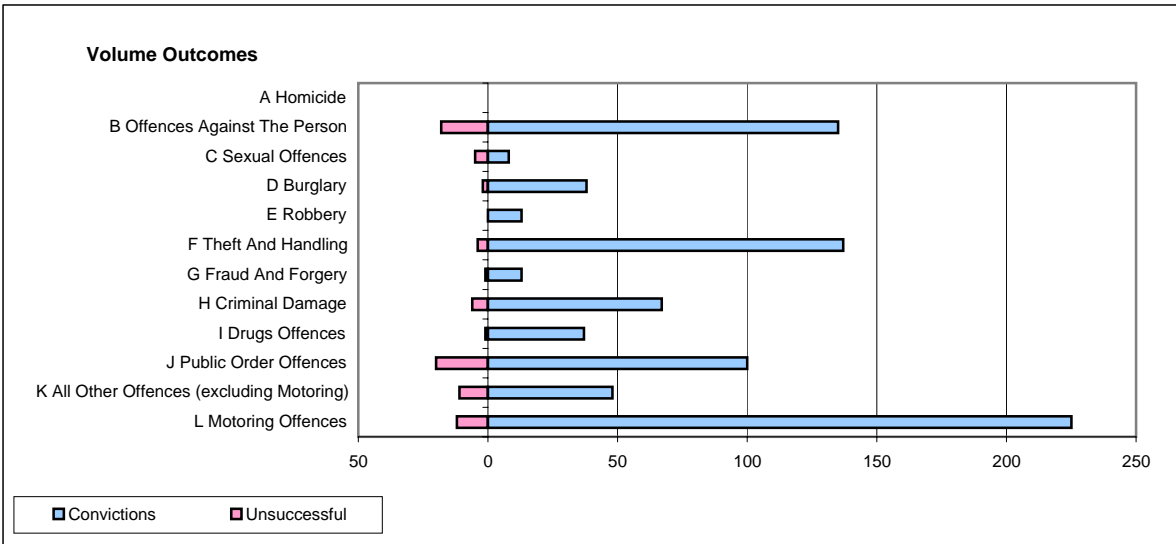
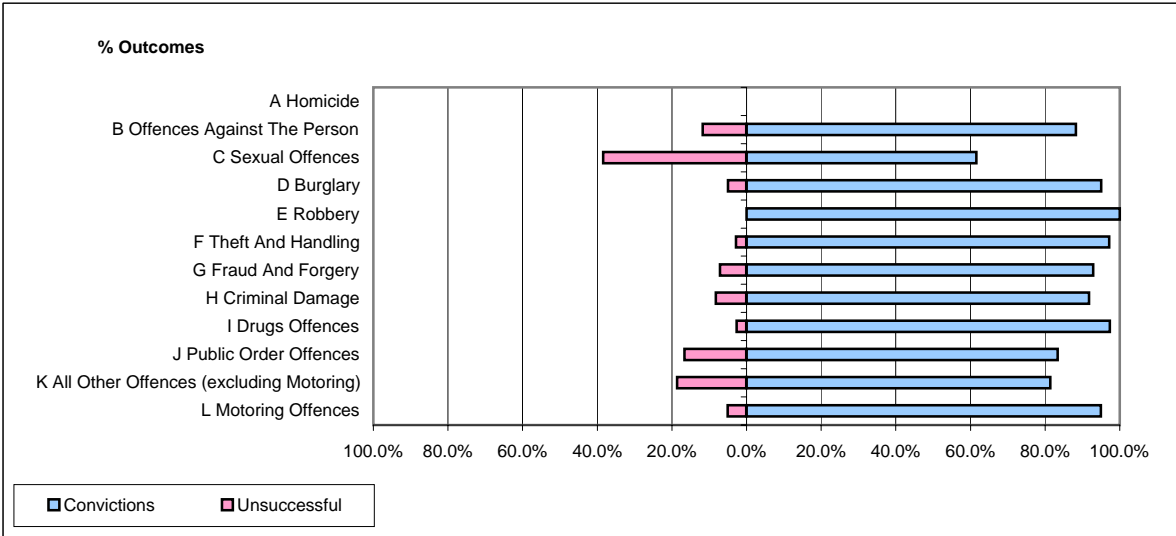


**CPS OUTCOMES BY PRINCIPAL OFFENCE CATEGORY**

**June 2008**

**P11-Durham**



	Convictions		Unsuccessful	
	Number of Defendants	%	Number of Defendants	%
<b>A Homicide</b>	<b>0</b>	<b>0</b>	<b>0</b>	<b>0</b>
<b>B Offences Against The Person</b>	<b>135</b>	<b>88.2%</b>	<b>18</b>	<b>11.8%</b>
<b>C Sexual Offences</b>	<b>8</b>	<b>61.5%</b>	<b>5</b>	<b>38.5%</b>
<b>D Burglary</b>	<b>38</b>	<b>95.0%</b>	<b>2</b>	<b>5.0%</b>
<b>E Robbery</b>	<b>13</b>	<b>100.0%</b>	<b>0</b>	<b>0.0%</b>
<b>F Theft And Handling</b>	<b>137</b>	<b>97.2%</b>	<b>4</b>	<b>2.8%</b>
<b>G Fraud And Forgery</b>	<b>13</b>	<b>92.9%</b>	<b>1</b>	<b>7.1%</b>
<b>H Criminal Damage</b>	<b>67</b>	<b>91.8%</b>	<b>6</b>	<b>8.2%</b>
<b>I Drugs Offences</b>	<b>37</b>	<b>97.4%</b>	<b>1</b>	<b>2.6%</b>
<b>J Public Order Offences</b>	<b>100</b>	<b>83.3%</b>	<b>20</b>	<b>16.7%</b>
<b>K All Other Offences (excluding Motoring)</b>	<b>48</b>	<b>81.4%</b>	<b>11</b>	<b>18.6%</b>
<b>L Motoring Offences</b>	<b>225</b>	<b>94.9%</b>	<b>12</b>	<b>5.1%</b>
<b>Admin Finalisations</b>	<b>0</b>	<b>0.0%</b>	<b>11</b>	<b>100.0%</b>
<b>TOTAL</b>	<b>821</b>	<b>90.0%</b>	<b>91</b>	<b>10.0%</b>