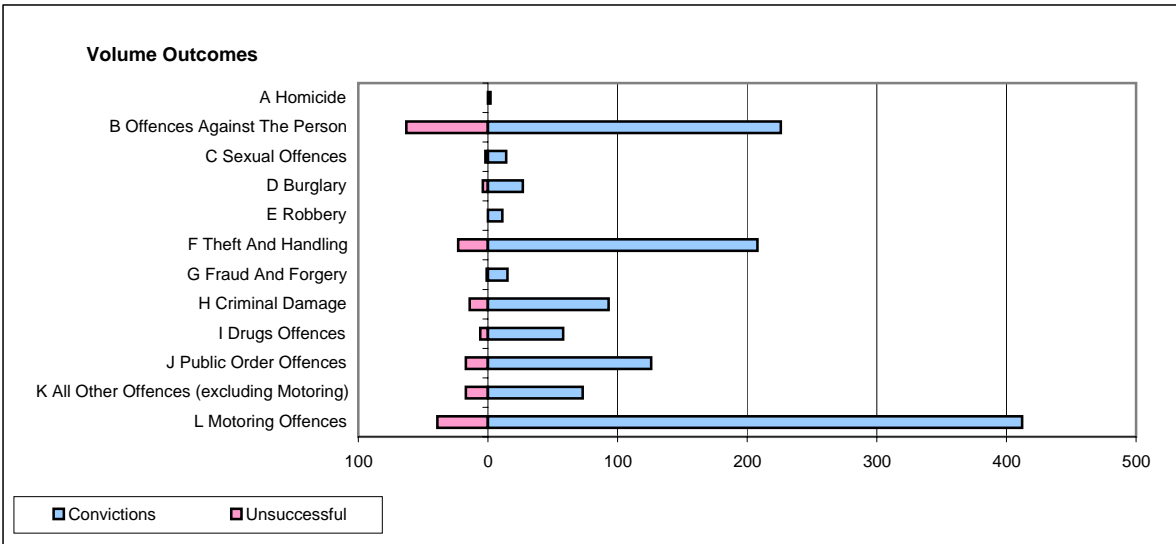
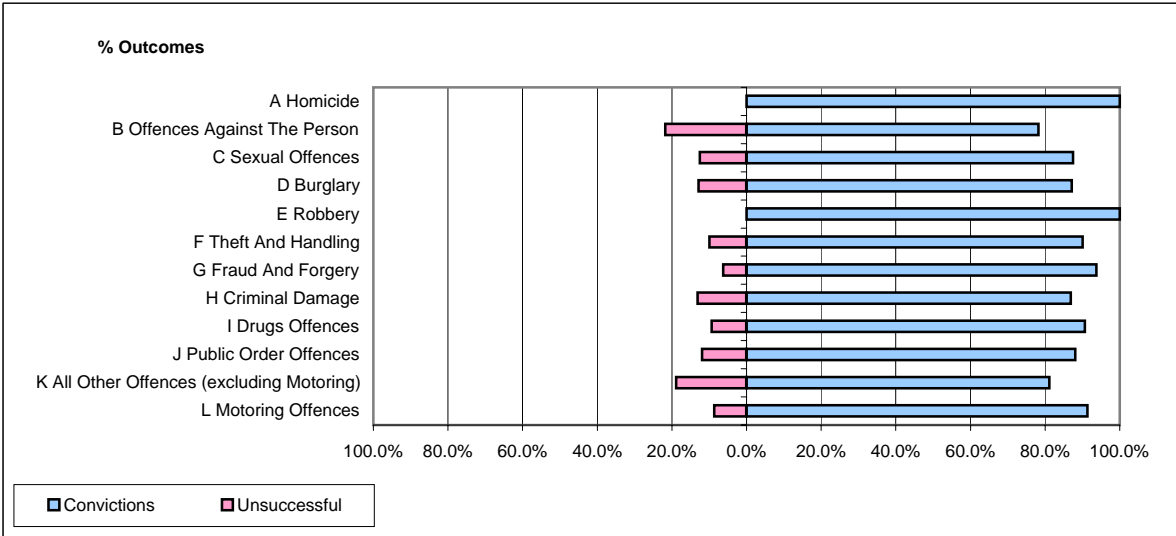


CPS OUTCOMES BY PRINCIPAL OFFENCE CATEGORY

June 2008

P08-Derbyshire



	Convictions		Unsuccessful	
	Number of Defendants	%	Number of Defendants	%
A Homicide	2	100.0%	0	0.0%
B Offences Against The Person	226	78.2%	63	21.8%
C Sexual Offences	14	87.5%	2	12.5%
D Burglary	27	87.1%	4	12.9%
E Robbery	11	100.0%	0	0.0%
F Theft And Handling	208	90.0%	23	10.0%
G Fraud And Forgery	15	93.8%	1	6.3%
H Criminal Damage	93	86.9%	14	13.1%
I Drugs Offences	58	90.6%	6	9.4%
J Public Order Offences	126	88.1%	17	11.9%
K All Other Offences (excluding Motoring)	73	81.1%	17	18.9%
L Motoring Offences	412	91.4%	39	8.6%
Admin Finalisations	0	0.0%	25	100.0%
TOTAL	1,265	85.7%	211	14.3%