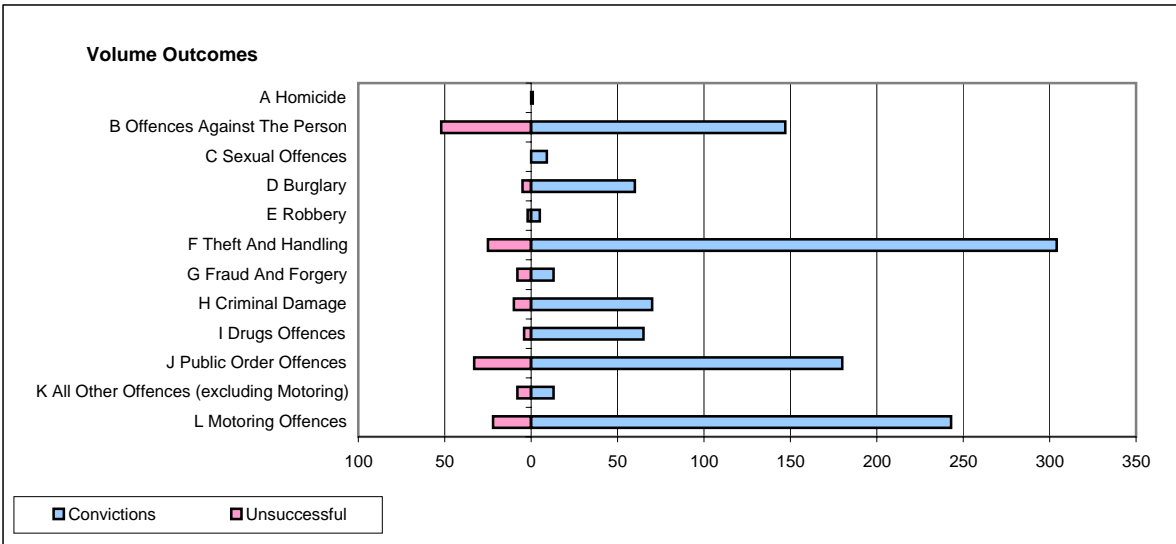
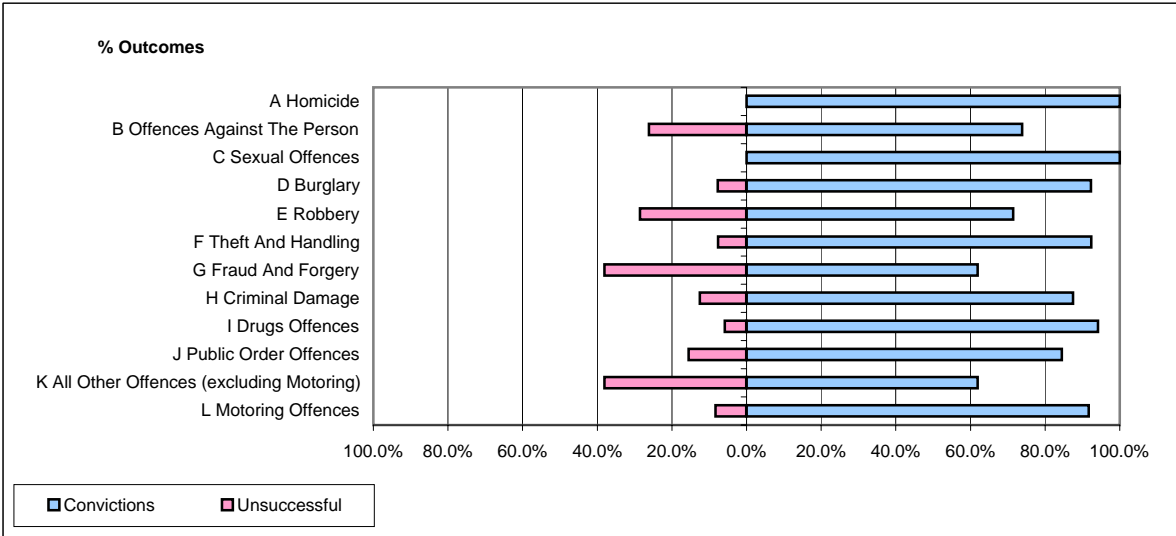


CPS OUTCOMES BY PRINCIPAL OFFENCE CATEGORY

June 2008

P06-Cleveland



	Convictions		Unsuccessful	
	Number of Defendants	%	Number of Defendants	%
A Homicide	1	100.0%	0	0.0%
B Offences Against The Person	147	73.9%	52	26.1%
C Sexual Offences	9	100.0%	0	0.0%
D Burglary	60	92.3%	5	7.7%
E Robbery	5	71.4%	2	28.6%
F Theft And Handling	304	92.4%	25	7.6%
G Fraud And Forgery	13	61.9%	8	38.1%
H Criminal Damage	70	87.5%	10	12.5%
I Drugs Offences	65	94.2%	4	5.8%
J Public Order Offences	180	84.5%	33	15.5%
K All Other Offences (excluding Motoring)	13	61.9%	8	38.1%
L Motoring Offences	243	91.7%	22	8.3%
Admin Finalisations	0	0.0%	16	100.0%
TOTAL	1,110	85.7%	185	14.3%