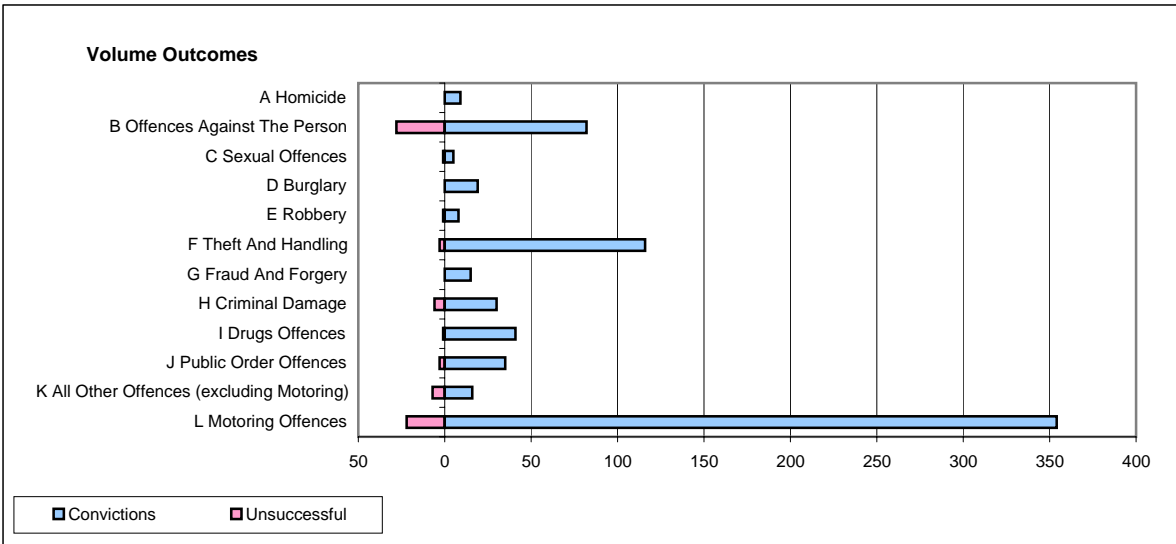
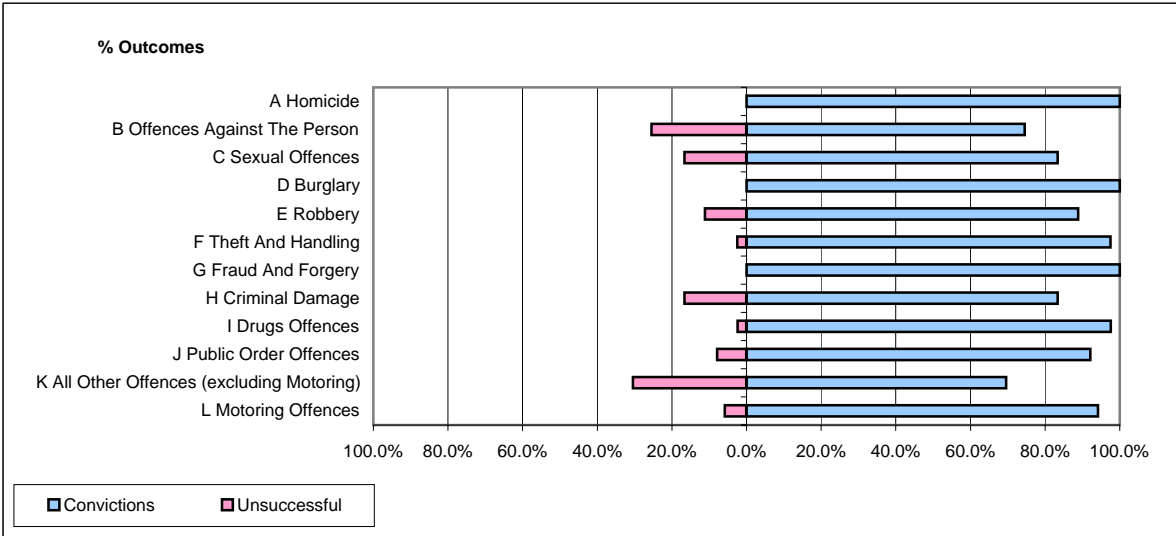


CPS OUTCOMES BY PRINCIPAL OFFENCE CATEGORY

June 2008

P02-Bedfordshire



	Convictions		Unsuccessful	
	Number of Defendants	%	Number of Defendants	%
A Homicide	9	100.0%	0	0.0%
B Offences Against The Person	82	74.5%	28	25.5%
C Sexual Offences	5	83.3%	1	16.7%
D Burglary	19	100.0%	0	0.0%
E Robbery	8	88.9%	1	11.1%
F Theft And Handling	116	97.5%	3	2.5%
G Fraud And Forgery	15	100.0%	0	0.0%
H Criminal Damage	30	83.3%	6	16.7%
I Drugs Offences	41	97.6%	1	2.4%
J Public Order Offences	35	92.1%	3	7.9%
K All Other Offences (excluding Motoring)	16	69.6%	7	30.4%
L Motoring Offences	354	94.1%	22	5.9%
Admin Finalisations	0	0.0%	9	100.0%
TOTAL	730	90.0%	81	10.0%