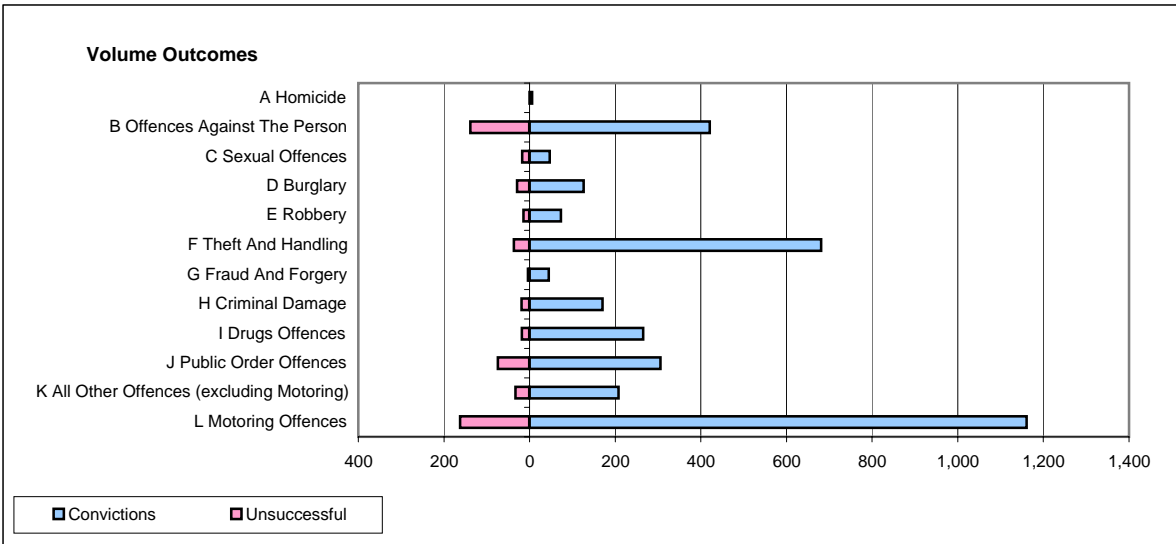
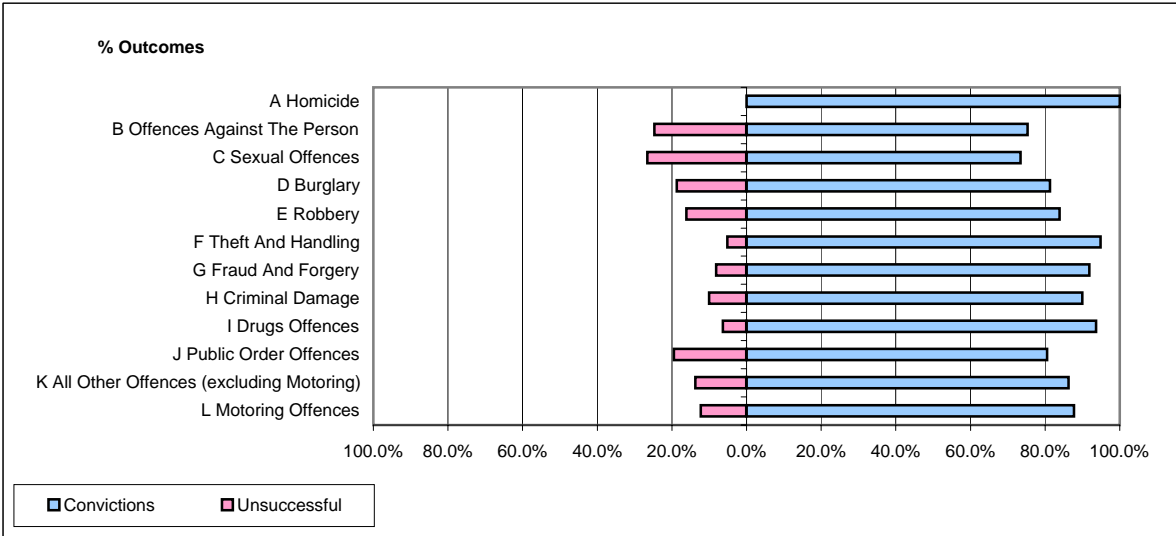


CPS OUTCOMES BY PRINCIPAL OFFENCE CATEGORY

May 2008

P41-WestMidlands



	Convictions		Unsuccessful	
	Number of Defendants	%	Number of Defendants	%
A Homicide	6	100.0%	0	0.0%
B Offences Against The Person	421	75.3%	138	24.7%
C Sexual Offences	47	73.4%	17	26.6%
D Burglary	126	81.3%	29	18.7%
E Robbery	73	83.9%	14	16.1%
F Theft And Handling	681	94.8%	37	5.2%
G Fraud And Forgery	45	91.8%	4	8.2%
H Criminal Damage	170	89.9%	19	10.1%
I Drugs Offences	265	93.6%	18	6.4%
J Public Order Offences	306	80.5%	74	19.5%
K All Other Offences (excluding Motoring)	208	86.3%	33	13.7%
L Motoring Offences	1,161	87.8%	162	12.2%
Admin Finalisations	0	0.0%	57	100.0%
TOTAL	3,509	85.4%	602	14.6%