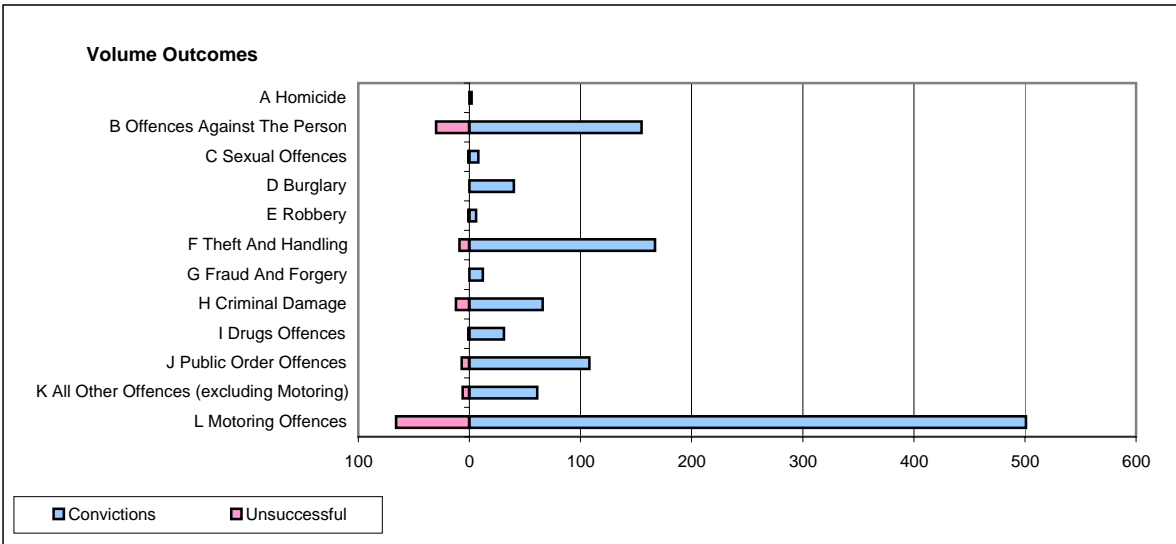
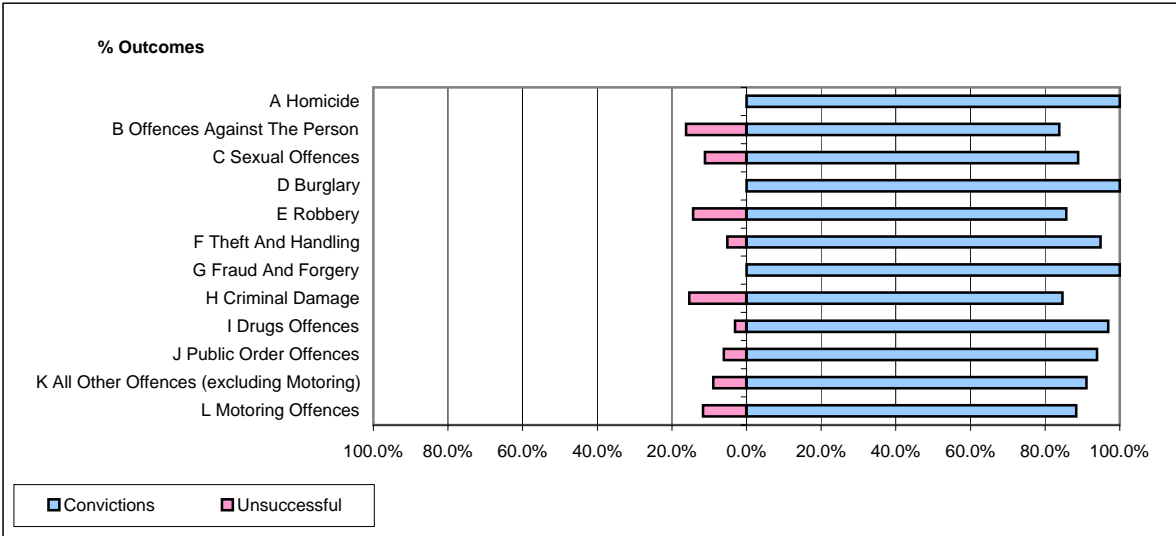


**CPS OUTCOMES BY PRINCIPAL OFFENCE CATEGORY**

**May 2008**

**P40-WestMercia**



	Convictions		Unsuccessful	
	Number of Defendants	%	Number of Defendants	%
<b>A Homicide</b>	<b>2</b>	<b>100.0%</b>	<b>0</b>	<b>0.0%</b>
<b>B Offences Against The Person</b>	<b>155</b>	<b>83.8%</b>	<b>30</b>	<b>16.2%</b>
<b>C Sexual Offences</b>	<b>8</b>	<b>88.9%</b>	<b>1</b>	<b>11.1%</b>
<b>D Burglary</b>	<b>40</b>	<b>100.0%</b>	<b>0</b>	<b>0.0%</b>
<b>E Robbery</b>	<b>6</b>	<b>85.7%</b>	<b>1</b>	<b>14.3%</b>
<b>F Theft And Handling</b>	<b>167</b>	<b>94.9%</b>	<b>9</b>	<b>5.1%</b>
<b>G Fraud And Forgery</b>	<b>12</b>	<b>100.0%</b>	<b>0</b>	<b>0.0%</b>
<b>H Criminal Damage</b>	<b>66</b>	<b>84.6%</b>	<b>12</b>	<b>15.4%</b>
<b>I Drugs Offences</b>	<b>31</b>	<b>96.9%</b>	<b>1</b>	<b>3.1%</b>
<b>J Public Order Offences</b>	<b>108</b>	<b>93.9%</b>	<b>7</b>	<b>6.1%</b>
<b>K All Other Offences (excluding Motoring)</b>	<b>61</b>	<b>91.0%</b>	<b>6</b>	<b>9.0%</b>
<b>L Motoring Offences</b>	<b>501</b>	<b>88.4%</b>	<b>66</b>	<b>11.6%</b>
<b>Admin Finalisations</b>	<b>0</b>	<b>0.0%</b>	<b>15</b>	<b>100.0%</b>
<b>TOTAL</b>	<b>1,157</b>	<b>88.7%</b>	<b>148</b>	<b>11.3%</b>