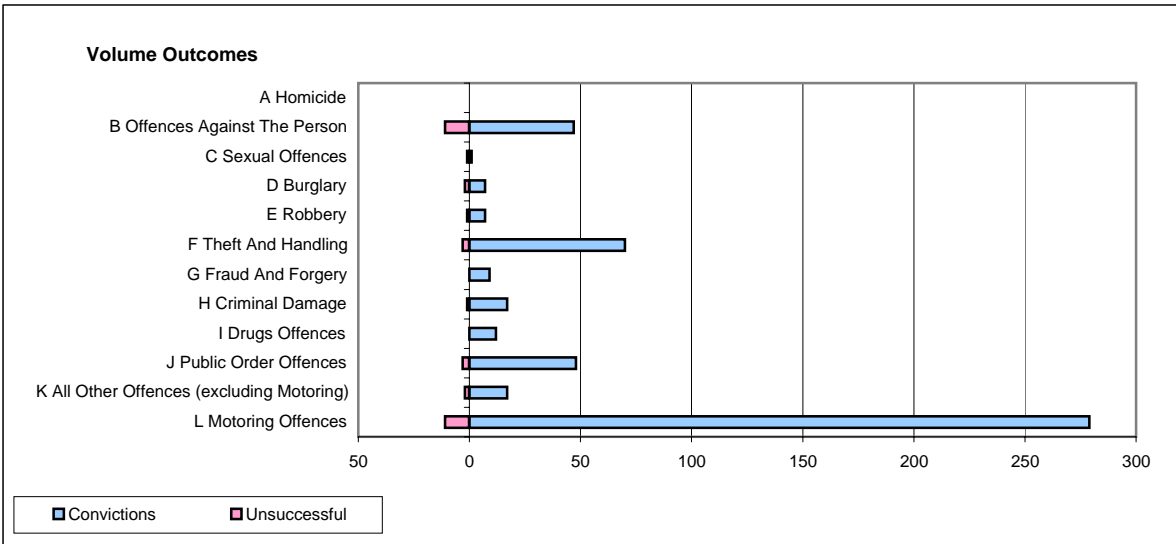
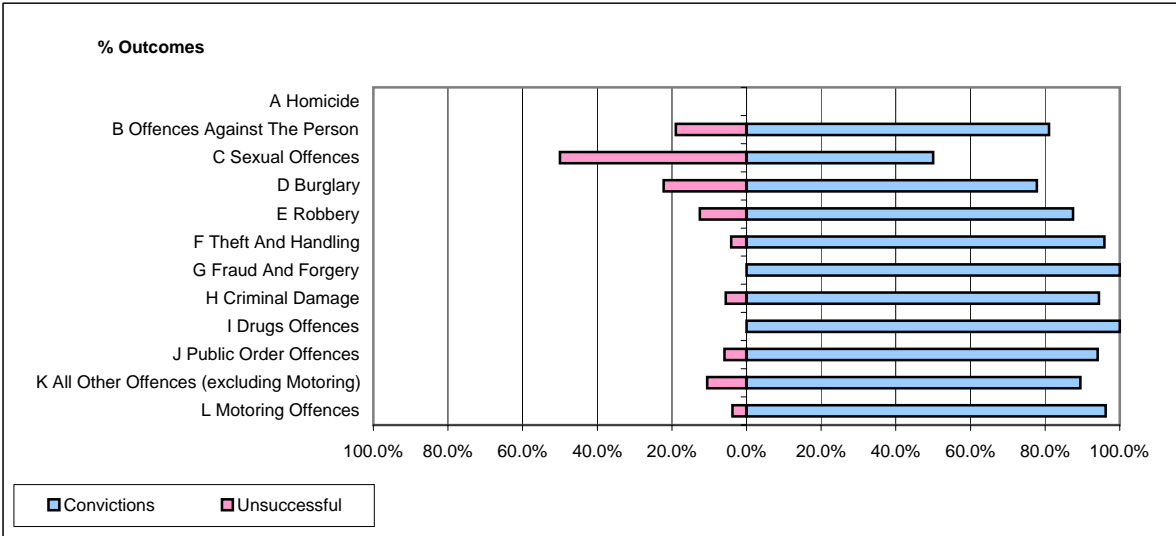


**CPS OUTCOMES BY PRINCIPAL OFFENCE CATEGORY**

**May 2008**

**P39-Warwickshire**



	Convictions		Unsuccessful	
	Number of Defendants	%	Number of Defendants	%
<b>A Homicide</b>	<b>0</b>	<b>0</b>	<b>0</b>	<b>0</b>
<b>B Offences Against The Person</b>	<b>47</b>	<b>81.0%</b>	<b>11</b>	<b>19.0%</b>
<b>C Sexual Offences</b>	<b>1</b>	<b>50.0%</b>	<b>1</b>	<b>50.0%</b>
<b>D Burglary</b>	<b>7</b>	<b>77.8%</b>	<b>2</b>	<b>22.2%</b>
<b>E Robbery</b>	<b>7</b>	<b>87.5%</b>	<b>1</b>	<b>12.5%</b>
<b>F Theft And Handling</b>	<b>70</b>	<b>95.9%</b>	<b>3</b>	<b>4.1%</b>
<b>G Fraud And Forgery</b>	<b>9</b>	<b>100.0%</b>	<b>0</b>	<b>0.0%</b>
<b>H Criminal Damage</b>	<b>17</b>	<b>94.4%</b>	<b>1</b>	<b>5.6%</b>
<b>I Drugs Offences</b>	<b>12</b>	<b>100.0%</b>	<b>0</b>	<b>0.0%</b>
<b>J Public Order Offences</b>	<b>48</b>	<b>94.1%</b>	<b>3</b>	<b>5.9%</b>
<b>K All Other Offences (excluding Motoring)</b>	<b>17</b>	<b>89.5%</b>	<b>2</b>	<b>10.5%</b>
<b>L Motoring Offences</b>	<b>279</b>	<b>96.2%</b>	<b>11</b>	<b>3.8%</b>
<b>Admin Finalisations</b>	<b>0</b>	<b>0.0%</b>	<b>2</b>	<b>100.0%</b>
<b>TOTAL</b>	<b>514</b>	<b>93.3%</b>	<b>37</b>	<b>6.7%</b>