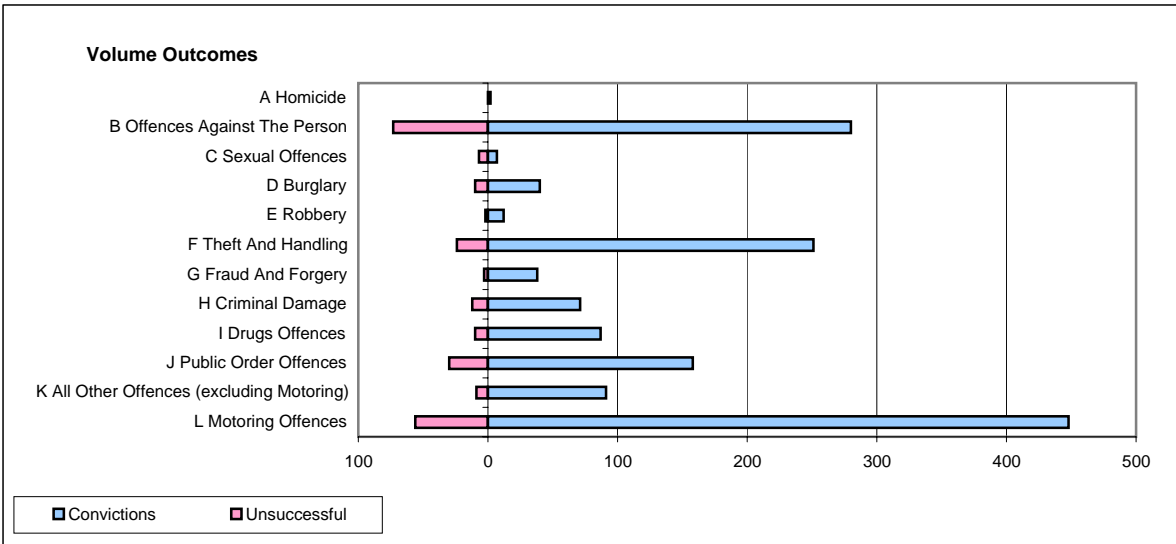
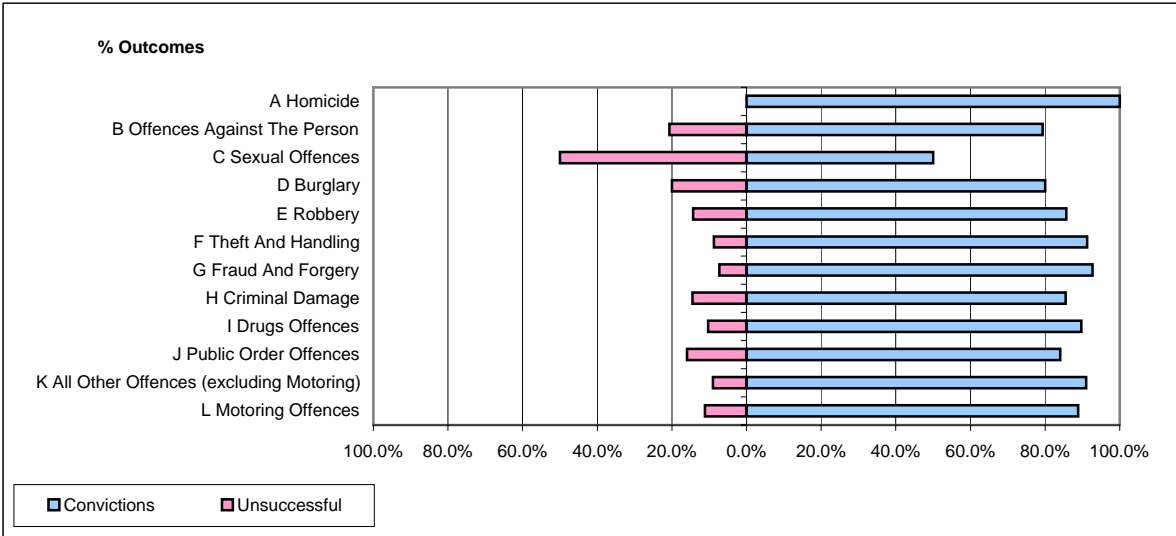


CPS OUTCOMES BY PRINCIPAL OFFENCE CATEGORY

May 2008

P37-Sussex



	Convictions		Unsuccessful	
	Number of Defendants	%	Number of Defendants	%
A Homicide	2	100.0%	0	0.0%
B Offences Against The Person	280	79.3%	73	20.7%
C Sexual Offences	7	50.0%	7	50.0%
D Burglary	40	80.0%	10	20.0%
E Robbery	12	85.7%	2	14.3%
F Theft And Handling	251	91.3%	24	8.7%
G Fraud And Forgery	38	92.7%	3	7.3%
H Criminal Damage	71	85.5%	12	14.5%
I Drugs Offences	87	89.7%	10	10.3%
J Public Order Offences	158	84.0%	30	16.0%
K All Other Offences (excluding Motoring)	91	91.0%	9	9.0%
L Motoring Offences	448	88.9%	56	11.1%
Admin Finalisations	0	0.0%	34	100.0%
TOTAL	1,485	84.6%	270	15.4%