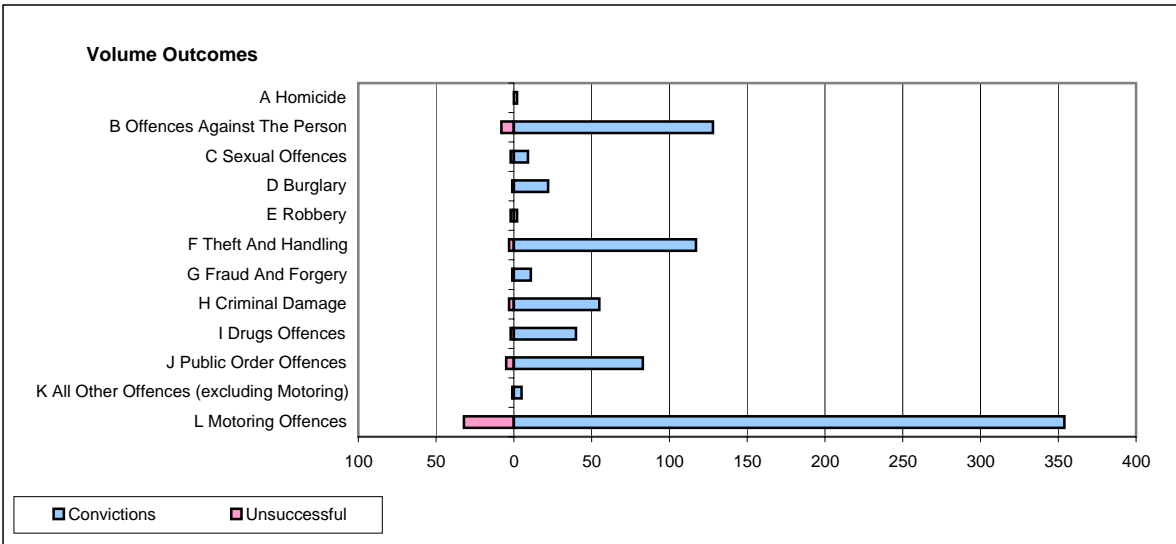
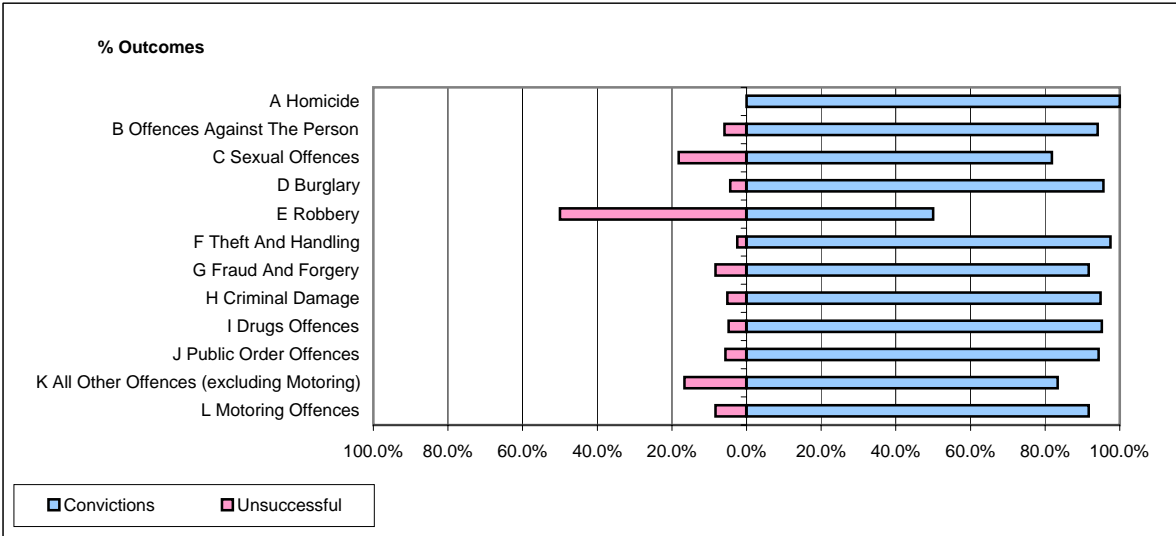


**CPS OUTCOMES BY PRINCIPAL OFFENCE CATEGORY**

**May 2008**

**P35-Suffolk**



	Convictions		Unsuccessful	
	Number of Defendants	%	Number of Defendants	%
<b>A Homicide</b>	<b>2</b>	<b>100.0%</b>	<b>0</b>	<b>0.0%</b>
<b>B Offences Against The Person</b>	<b>128</b>	<b>94.1%</b>	<b>8</b>	<b>5.9%</b>
<b>C Sexual Offences</b>	<b>9</b>	<b>81.8%</b>	<b>2</b>	<b>18.2%</b>
<b>D Burglary</b>	<b>22</b>	<b>95.7%</b>	<b>1</b>	<b>4.3%</b>
<b>E Robbery</b>	<b>2</b>	<b>50.0%</b>	<b>2</b>	<b>50.0%</b>
<b>F Theft And Handling</b>	<b>117</b>	<b>97.5%</b>	<b>3</b>	<b>2.5%</b>
<b>G Fraud And Forgery</b>	<b>11</b>	<b>91.7%</b>	<b>1</b>	<b>8.3%</b>
<b>H Criminal Damage</b>	<b>55</b>	<b>94.8%</b>	<b>3</b>	<b>5.2%</b>
<b>I Drugs Offences</b>	<b>40</b>	<b>95.2%</b>	<b>2</b>	<b>4.8%</b>
<b>J Public Order Offences</b>	<b>83</b>	<b>94.3%</b>	<b>5</b>	<b>5.7%</b>
<b>K All Other Offences (excluding Motoring)</b>	<b>5</b>	<b>83.3%</b>	<b>1</b>	<b>16.7%</b>
<b>L Motoring Offences</b>	<b>354</b>	<b>91.7%</b>	<b>32</b>	<b>8.3%</b>
<b>Admin Finalisations</b>	<b>0</b>	<b>0.0%</b>	<b>11</b>	<b>100.0%</b>
<b>TOTAL</b>	<b>828</b>	<b>92.1%</b>	<b>71</b>	<b>7.9%</b>