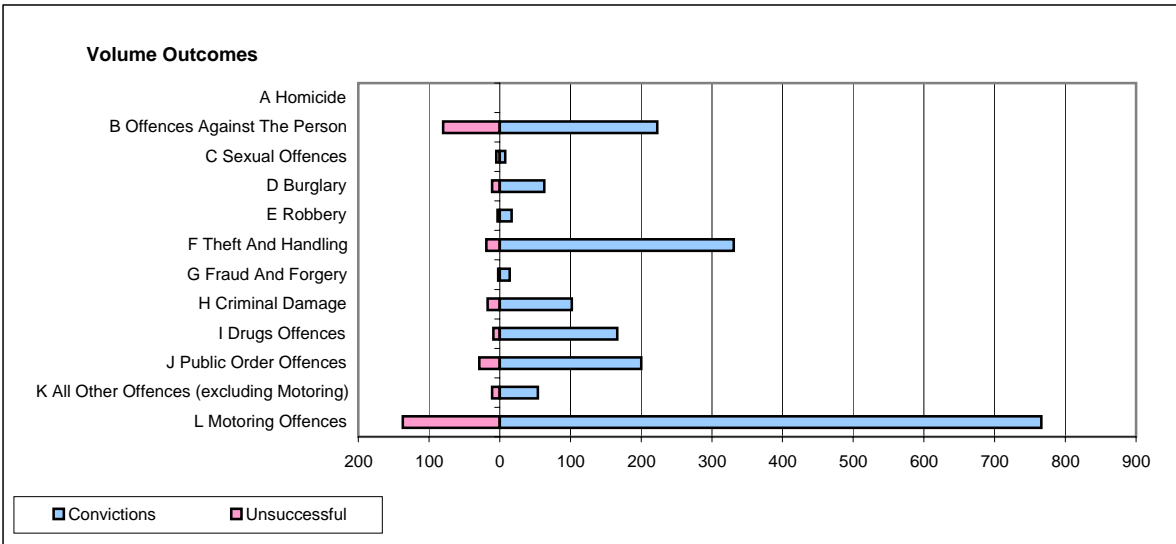
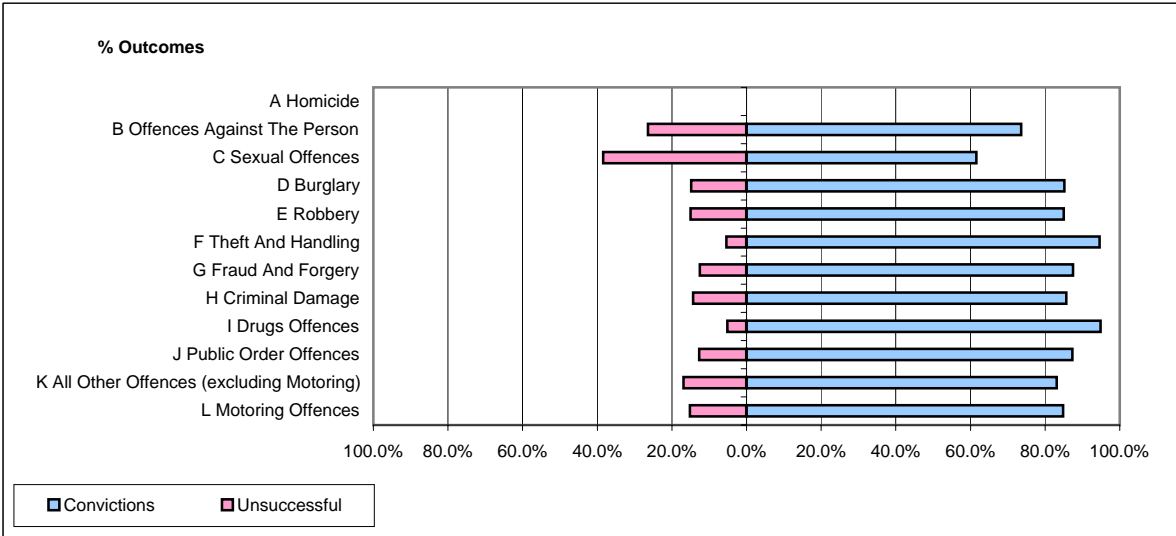


CPS OUTCOMES BY PRINCIPAL OFFENCE CATEGORY

May 2008

P32-SouthWales



	Convictions		Unsuccessful	
	Number of Defendants	%	Number of Defendants	%
A Homicide	0	0	0	0
B Offences Against The Person	223	73.6%	80	26.4%
C Sexual Offences	8	61.5%	5	38.5%
D Burglary	63	85.1%	11	14.9%
E Robbery	17	85.0%	3	15.0%
F Theft And Handling	331	94.6%	19	5.4%
G Fraud And Forgery	14	87.5%	2	12.5%
H Criminal Damage	102	85.7%	17	14.3%
I Drugs Offences	166	94.9%	9	5.1%
J Public Order Offences	200	87.3%	29	12.7%
K All Other Offences (excluding Motoring)	54	83.1%	11	16.9%
L Motoring Offences	766	84.8%	137	15.2%
Admin Finalisations	0	0.0%	60	100.0%
TOTAL	1,944	83.5%	383	16.5%